



SG901-1066 Integrated Wi-Fi Antenna

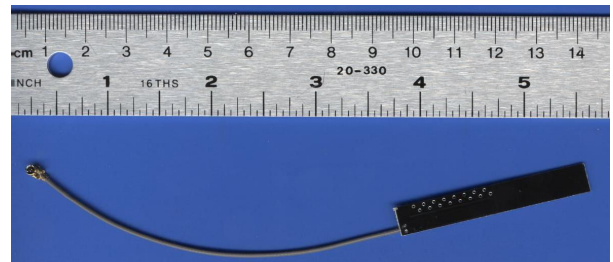
Overview

The SG901-1066 is a small highly integrated high efficiency, low gain, embedded antenna solution for WLAN products. The focus of this antenna is for next generation wireless product design. It provides the flexibility of an embedded antenna with top performance. The Embedded Antenna was designed to accommodate most WLAN applications, such as routers and gateways. The product can be easily integrated onto a board or into an ID package design.

Features

The SG901-1066 Embedded Antenna is defined by the following features:

- IEEE 802.11 b/g/n standards
- Case mount with 10 cm cable
- 3.8 dBi peak gain, 1 db cable loss excluded
- High efficiency
- Quick integration
- RoHS compliant



Ordering Information

SG901066-C: Bulk only

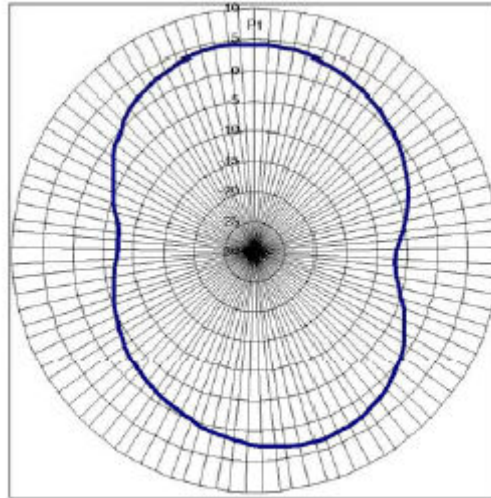
Note: Cable length is available in different lengths, please call Sagrad Sales for details.



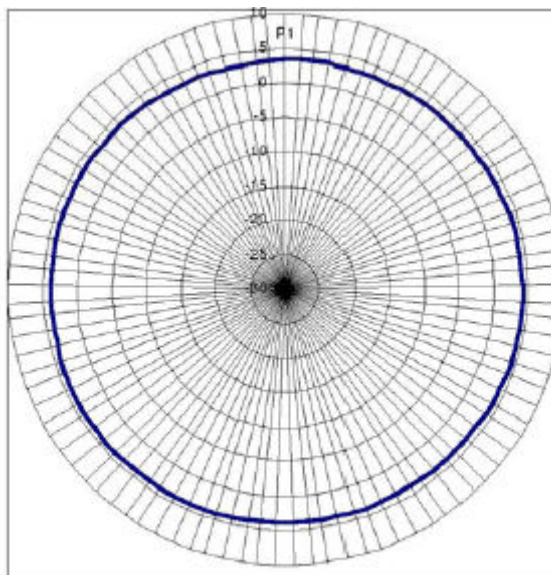
Radiation Patterns

Patterns for Free Standing Antenna

Patterns taken on 90mm x 90mm x 2.2mm thick, ABS Plastic sheet using 1.6mm double sided tape.



Measured Azimuth Radiation Pattern



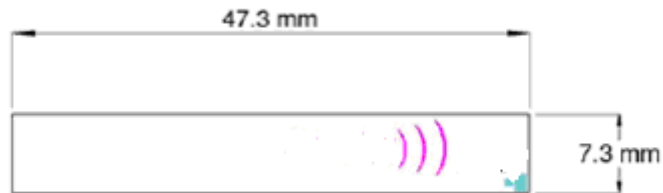
Measured Elevation Radiation Pattern



General Specifications and Interface

Standard	IEEE 802.11n and 802.11 b/g
Frequency Range	2.4 to 2.49 GHz
Peak Gain	3.8 dBi, 1 db cable loss excluded
VSWR	2:1
Feed Impedance	50 Ohms
Power Handling	30 dBm
Interface	One set of soldering pads for 50 ohm, 1.13mm diameter, Micro coax cable
Antenna Dimensions	48.3 x 7.3 (mm)
Weight	0.4 g (0.014 oz)

Dimensions



SG901-1066 Embedded Antenna Dimensions

X-ON Electronics

Largest Supplier of Electrical and Electronic Components

Click to view similar products for [Antennas](#) category:

Click to view products by [Sagrad](#) manufacturer:

Other Similar products are found below :

[GAN30084EU](#) [930-033-R](#) [GW17.07.0250E](#) [1513563-1](#) [EXE902SM](#) [APAMPG-117](#) [MAF94383](#) [W3908B0100](#) [W6102B0100](#) [YE572113-](#)
[30RSMM](#) [108-00014-50](#) [66089-2406](#) [A09-F8NF-M](#) [A09-F5NF-M](#) [RGFRA1903041A1T](#) [W3593B0100](#) [W3921B0100](#) [SIMNA-868](#) [SIMNA-](#)
[915](#) [SIMNA-433](#) [W1044](#) [W1049B090](#) [A75-001](#) [WTL2449CQ1-FRSMM](#) [CPL9C](#) [EXB148BN](#) [0600-00060](#) [TRA9020S3PBN-001](#) [GD5W-](#)
[28P-NF](#) [MA9-7N](#) [GD53-25](#) [GD5W-21P-NF](#) [EXB144SM](#) [C37](#) [MAF94051](#) [P1744](#) [MA9-5N](#) [EXD420PL](#) [B1322NR](#) [QWFTB120](#)
[MAF94271](#) [MAF94300](#) [GPSMB301](#) [FG4403](#) [AO-AGSM-OM54](#) [5200232](#) [MIKROE-2349](#) [WCM.01.0111](#) [MIKROE-2393](#) [MIKROE-2352](#)