

Drg No :- C 44105

INSTALLATION DRAWING

ISSUE	REVISION	DATE
1	FIRST ISSUE	14/9/00

SPECIFICATION

FREE POSITION :- 16.8(0.66) MAX

TOTAL TRAVEL :- 14.1(0.56) POSITION

ACTUATING FORCE:- 4.5N(16.2ozf)MAX AT CONTACT BREAK

ACTUATING FORCE :-4.8N(17.3ozf)MAX AT TOTAL TRAVEL POSITION

MIN GAP AT TOTAL :- 3.0 (0.12) TRAVEL POSITION

SPECIAL FEATURE :- TESTED AND STAMPED TO U.L. AND CSA REQUIREMENTS.

SWITCH SUBJECT TO 100,000 OPERATIONS COMPLIANCE TEST

APPROVAL RATING :-
10A - 250 VAC
1/2HP - 125 OR 250 VAC

DEGREE OF PROTECTION:- ENCLOSURE IEC IP40

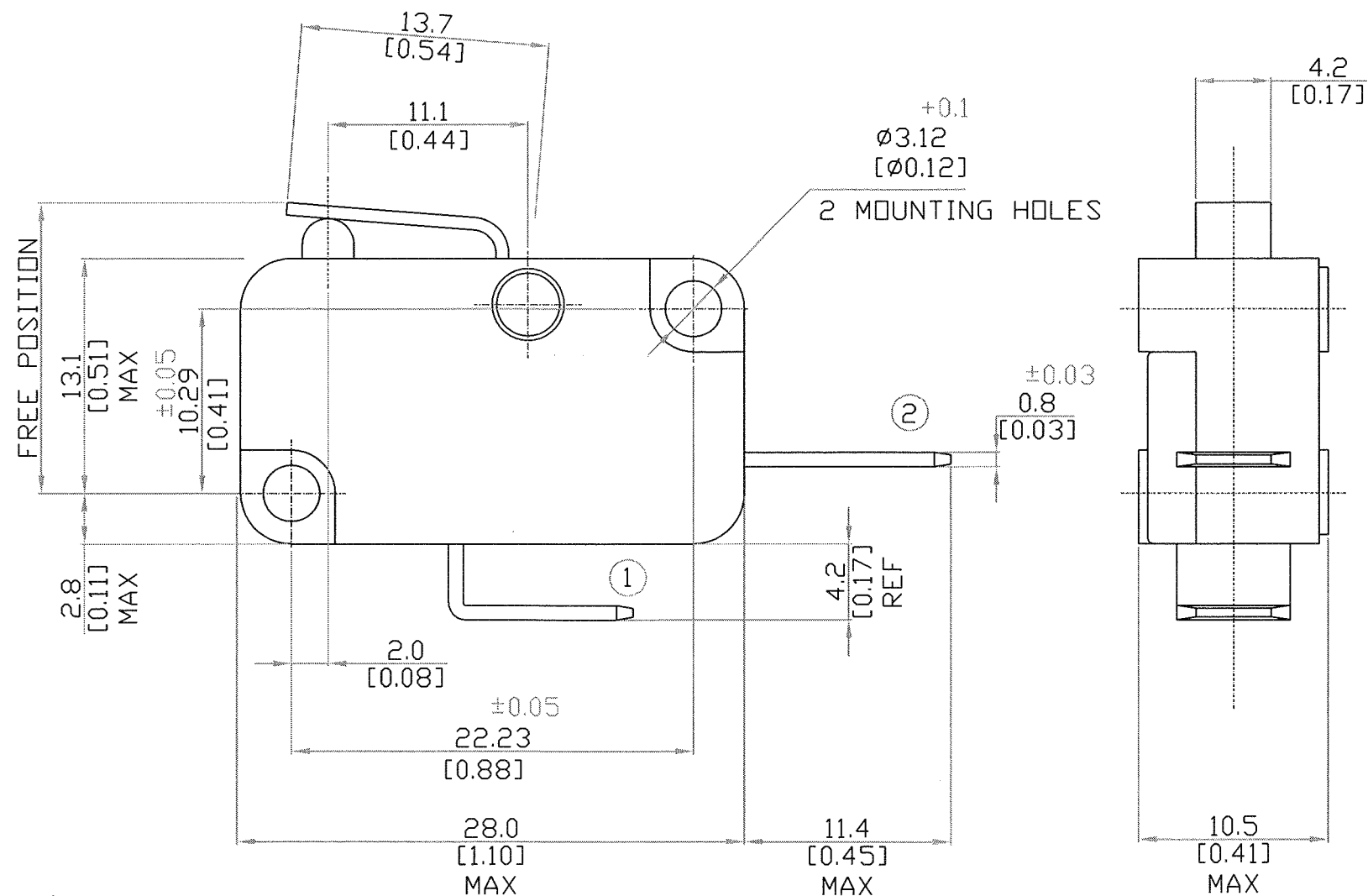
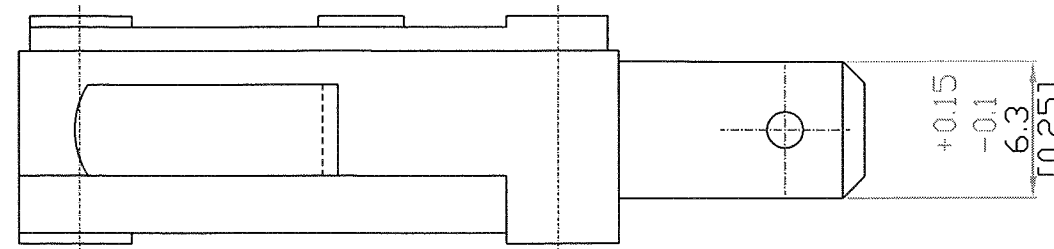
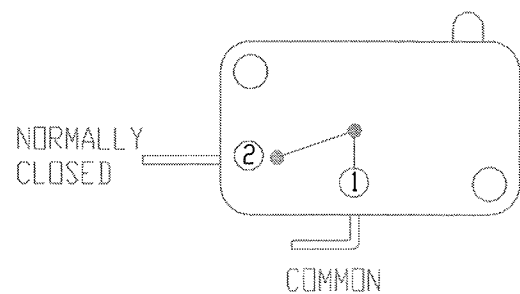


DIAGRAM OF CONNECTIONS



24 OCT 2000

SAIA-Burgess Electronics

SWITCHES • MOTORS • CONTROLLERS

SAIA-Burgess Electronics Limited
Dukesway, Team Valley Trading Estate
Gateshead, Tyne & Wear NE11 0UB
Tel: (0191)4016100, Fax: (0191)4016322



DO NOT SCALE !
This drawing must only be amended on CAD system

TOLERANCES UNLESS STATED:-
NO DECIMAL PLACE ±0.50 1 DECIMAL PLACES ±0.25
2 DECIMAL PLACES ±0.15 ANGULAR ±1°
INCH - OUNCE UNITS (IN BRACKETS)

ALL DIMENSIONS SPECIFIED IN MILLIMETRES

DRAWN	T.BELL.	Approved	
DATE	14/9/00	DRAWING OFFICE	MLO
SCALE	3/1	ENGINEERING	[Signature]
DATE ISSUED		QUALITY ASSURANCE	[Signature]

TITLE / DESCRIPTION
BVM3FY-ULS

Drg No :- C 44105

A3

X-ON Electronics

Largest Supplier of Electrical and Electronic Components

Click to view similar products for [Basic / Snap Action Switches](#) category:

Click to view products by [Saia-Burgess](#) manufacturer:

Other Similar products are found below :

[83228001](#) [01.098.1358.1](#) [602EN1-6B](#) [602EN532](#) [602EN535-RB](#) [602HE5-RB1](#) [604HE162](#) [604HE223-6B](#) [624HE17-RB](#) [6HM89](#) [6PA78-JM](#)
[6SE1](#) [6SX1-H58](#) [70500840](#) [MBD5B1](#) [MBH2731](#) [73-316-0012](#) [79211759](#) [79211923](#) [79218589](#) [7AS12](#) [ML-1155](#) [ML-1376](#) [831010C3.0](#)
[831060C3.TL](#) [831090C2.EL](#) [83131904](#) [84212012](#) [8AS239](#) [8HM73-3](#) [903VB1-PG](#) [914CE1-6G](#) [PL-100](#) [11SM1077-H4](#) [11SM1077-H58](#)
[11SM1-TN107](#) [11SM405](#) [11SM703-T](#) [11SM8423-H2](#) [11SX37-T](#) [11SX48-H58](#) [11SX55-H58](#) [11SM2442-T](#) [11SM76-T](#) [11SM77-H58](#)
[11SM77-T](#) [11SM863-T](#) [11SM866](#) [11SX47-H58](#) [A7CN-1M-1-LEFT](#)