

DRG. No. C.34996.		SWITCH. F4T7YCGP-UL.	
SHEET 1 OF 1 SHEET			
DRAWN T. B.	DATE 24.10.90	APPROVED	
TRACED M. G.	SCALE 5:1	DRAWING OFFICE. <i>T. Bell</i>	SALES DEPT. G.W.

SPECIFICATION.

ACTUATING FORCE :- 0.7N (2.50Zf) MAX
 RELEASE FORCE :- 0.09N (.320Zf) MIN.
 FREE POSITION :- 12.5 (.49) MAX.
 OPERATING POSITION :- $10.3 \begin{smallmatrix} +0.8 \\ -0.55 \end{smallmatrix}$ (.40)
 MOVEMENT DIFFERENTIAL :- 0.45 (.018) MAX.
 OVER TRAVEL :- DEPRESS TO CASE (AVAILABLE)

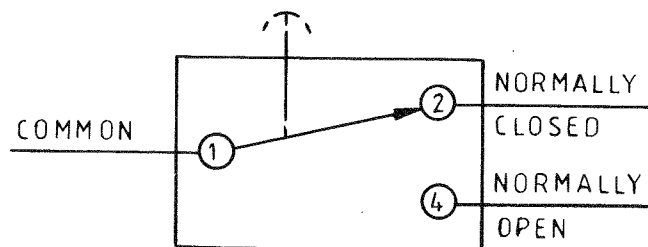
SPECIAL FEATURE:-

TESTED AND STAMPED TO UL AND C.S.A. REQUIREMENTS.

APPROVAL RATING:-

5 AMP - 250 V.A.C.

DIAGRAM OF CONNECTIONS.



①

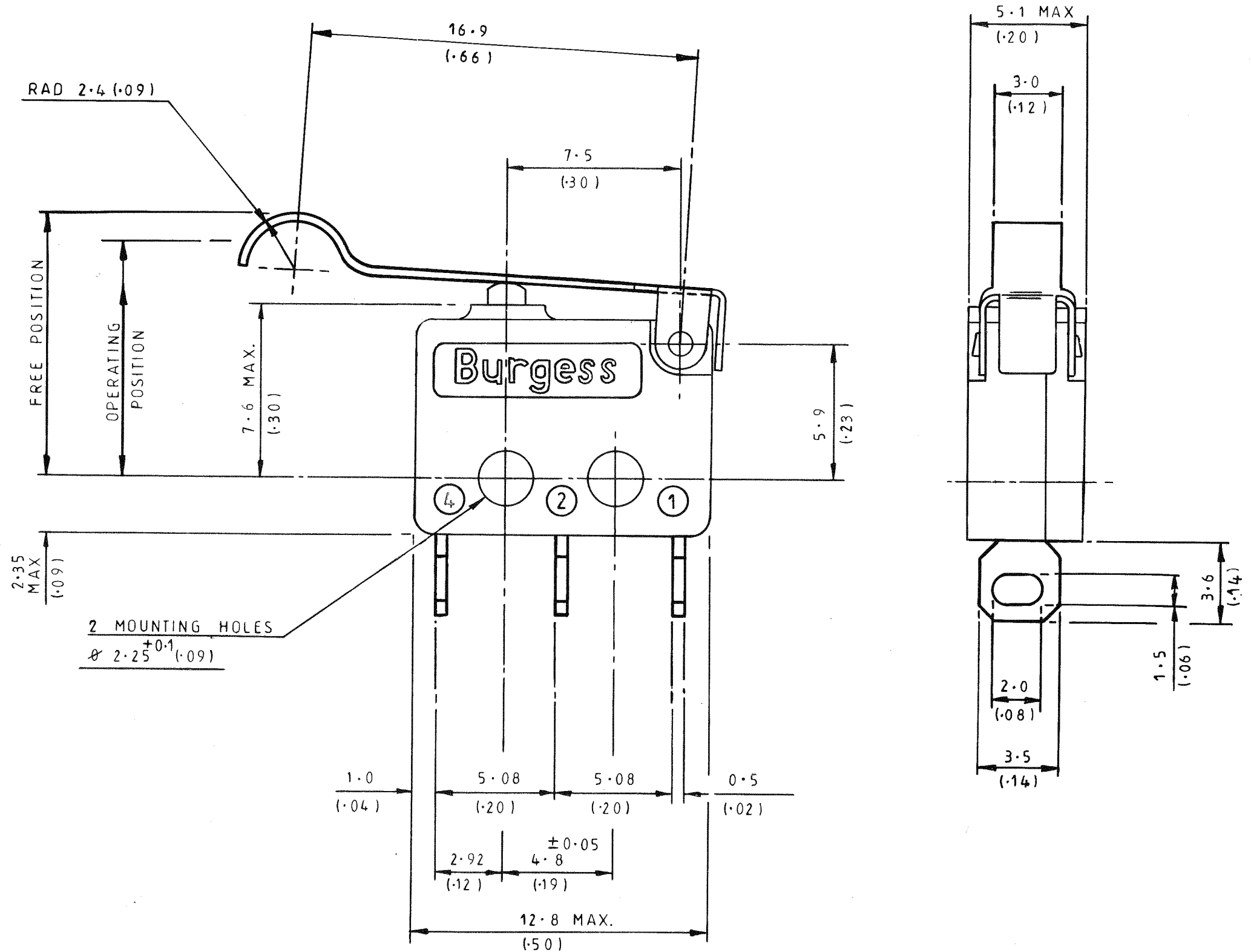
BURGESS MICRO SWITCH COMPANY LTD.

DUKES WAY, TEAM VALLEY,
 GATESHEAD 11, ENGLAND.
 TELEPHONE LOW FELL (0632) 877171.

THIRD ANGLE PROJECTION.

INSTALLATION DRAWING

DO NOT SCALE.



WEIGHT:- 1.5g MAX.

DEGREE OF PROTECTION:- ENCLOSURE IP40. TERMINALS IP00.

ISSUE No.	DATE	MICRO FILM
2	29.7.92	
3	8.4.98	

ALL DIMENSIONS SPECIFIED IN MILLIMETRES
 TOLERANCES UNLESS STATED:-
 NO DECIMAL PLACES ± 0.5 1 DECIMAL PLACE ± 0.25
 2 DECIMAL PLACES ± 0.15 ANGULAR $\pm 1^\circ$
 INCH-OUNCE UNITS (IN BRACKETS)

SWITCH
F4T7YCGP-UL.

DRG. No.
C.34996.

SHEET 1 OF 1 SHEET

X-ON Electronics

Largest Supplier of Electrical and Electronic Components

Click to view similar products for [Basic / Snap Action Switches](#) category:

Click to view products by [Saia-Burgess](#) manufacturer:

Other Similar products are found below :

[83228001](#) [01.098.1358.1](#) [602EN1-6B](#) [602EN532](#) [602EN535-RB](#) [602HE5-RB1](#) [604HE162](#) [604HE223-6B](#) [624HE17-RB](#) [6HM89](#) [6PA78-JM](#)
[6SE1](#) [6SX1-H58](#) [70500840](#) [MBD5B1](#) [MBH2731](#) [73-316-0012](#) [79211759](#) [79211923](#) [79218589](#) [7AS12](#) [ML-1155](#) [ML-1376](#) [831010C3.0](#)
[831060C3.TL](#) [831090C2.EL](#) [83131904](#) [84212012](#) [8AS239](#) [8HM73-3](#) [903VB1-PG](#) [914CE1-6G](#) [PL-100](#) [11SM1077-H4](#) [11SM1077-H58](#)
[11SM1-TN107](#) [11SM405](#) [11SM703-T](#) [11SM8423-H2](#) [11SX37-T](#) [11SX48-H58](#) [11SX55-H58](#) [11SM2442-T](#) [11SM76-T](#) [11SM77-H58](#)
[11SM77-T](#) [11SM863-T](#) [11SM866](#) [11SX47-H58](#) [A7CN-1M-1-LEFT](#)