

DRG. No. C.18678.		SWITCH F5T8 - U.L.	
SHEET 1 OF 1 SHEET			
DRAWN J.W.L.	DATE 23.8.79.	APPROVED	
TRACED M.G.	SCALE 5:1	DRAWING OFFICE J.W.L.	SALES DEPT. A.D.

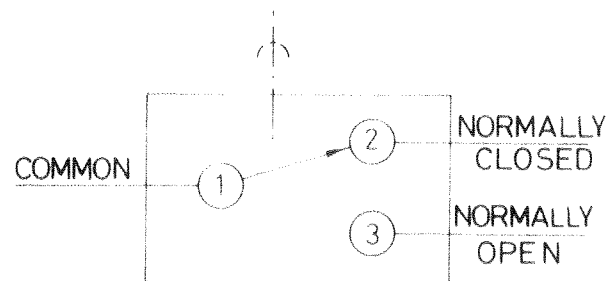
SPECIFICATION.

ACTUATING FORCE :- 1.4 N (5 OZf) MAX.
 RELEASE FORCE :- 0.25N (0.9 OZf) MIN.
 FREE POSITION :- 9.5 (-37) MAX.
 ± 0.3
 OPERATING POSITION :- 8.75 (-34)
 MOVEMENT DIFFERENTIAL :- 0.13 (-005) MAX.
 OVER TRAVEL(AVAILABLE) :- DEPRESS TO CASE

APPROVAL RATING:-
 5 AMP - 250 V.A.C.

SPECIAL FEATURE:-
 TESTED & STAMPED TO U.L. & C.S.A.
 REQUIREMENTS.

DIAGRAM OF CONNECTIONS.

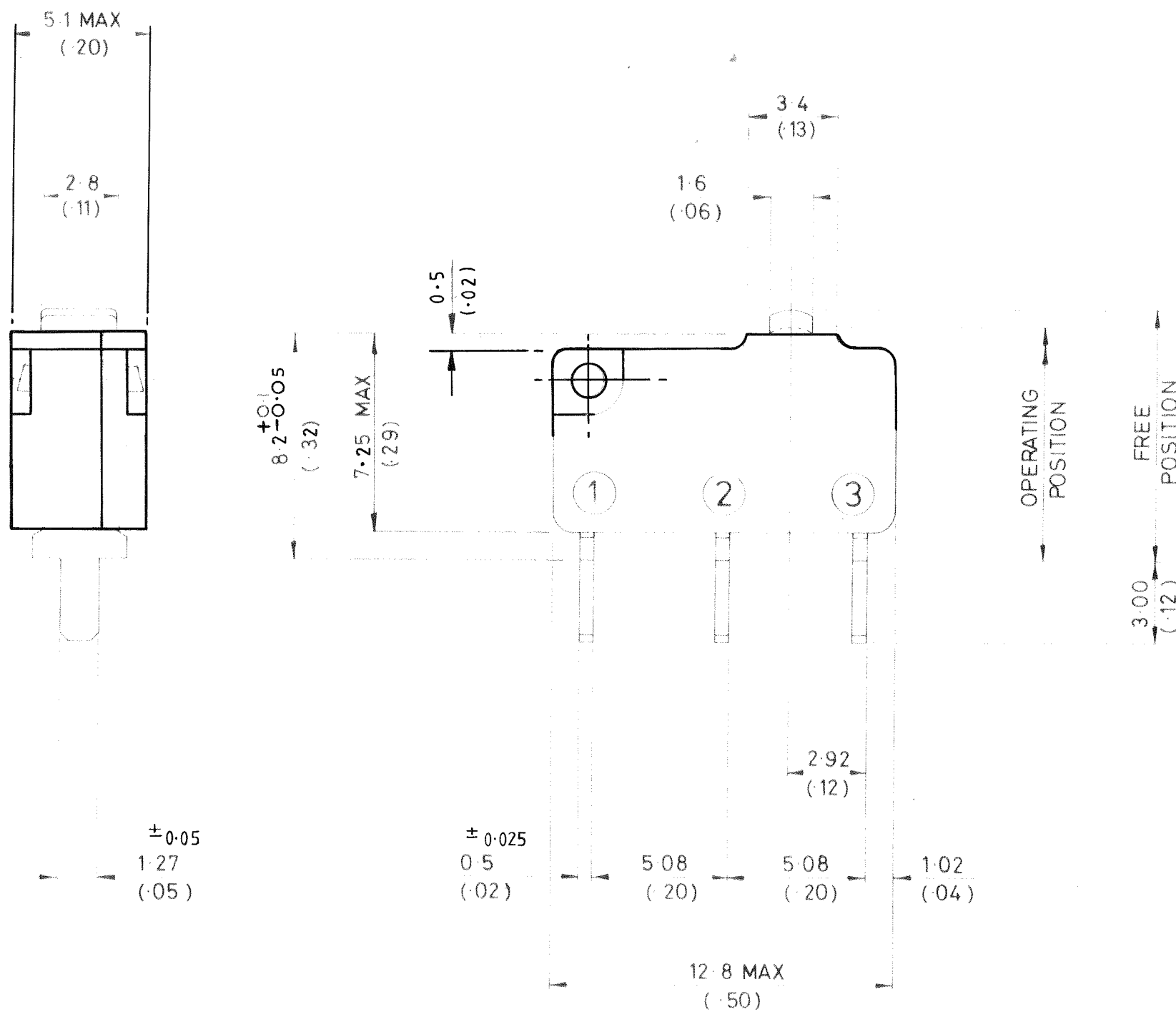


①
BURGESS MICRO SWITCH COMPANY LTD.
 DUKES WAY, TEAM VALLEY,
 GATESHEAD 11, ENGLAND.
 TELEPHONE LOW FELL (0632) 877171.

THIRD ANGLE PROJECTION.

INSTALLATION DRAWING

DO NOT SCALE.



WEIGHT :- 1g MAX.

DEGREE OF PROTECTION :- ENCLOSURE IP40
 TERMINALS IP00

ISSUE No. & DATE	MICRO FILM
2 4.12.79	
3 20.5.83	
4 4.3.87	
5 7.7.89	

ALL DIMENSIONS SPECIFIED IN MILLIMETRES
 TOLERANCES UNLESS STATED:-
 NO DECIMAL PLACES ± 0.5 1 DECIMAL PLACE ± 0.25
 2 DECIMAL PLACES ± 0.15 ANGULAR $\pm 1^\circ$
 INCH-OUNCE UNITS (IN BRACKETS)

SWITCH
 F5T8 - U.L.

DRG. No.
 C.18678.

SHEET 1 OF 1 SHEET

X-ON Electronics

Largest Supplier of Electrical and Electronic Components

Click to view similar products for [Basic / Snap Action Switches](#) category:

Click to view products by [Saia-Burgess](#) manufacturer:

Other Similar products are found below :

[83228001](#) [01.098.1358.1](#) [602EN1-6B](#) [602EN532](#) [602EN535-RB](#) [602HE5-RB1](#) [604HE162](#) [604HE223-6B](#) [624HE17-RB](#) [6HM89](#) [6PA78-JM](#)
[6SE1](#) [6SX1-H58](#) [70500840](#) [MBD5B1](#) [MBH2731](#) [73-316-0012](#) [79211759](#) [79211923](#) [79218589](#) [7AS12](#) [ML-1155](#) [ML-1376](#) [831010C3.0](#)
[831060C3.TL](#) [831090C2.EL](#) [83131904](#) [84212012](#) [8AS239](#) [8HM73-3](#) [903VB1-PG](#) [914CE1-6G](#) [PL-100](#) [11SM1077-H4](#) [11SM1077-H58](#)
[11SM1-TN107](#) [11SM405](#) [11SM703-T](#) [11SM8423-H2](#) [11SX37-T](#) [11SX48-H58](#) [11SX55-H58](#) [11SM2442-T](#) [11SM76-T](#) [11SM77-H58](#)
[11SM77-T](#) [11SM863-T](#) [11SM866](#) [11SX47-H58](#) [A7CN-1M-1-LEFT](#)