

Spezifikation Specification

Schnappschalter-Kontakte
Snap- action contacts

Ruhestellung:
Free position Lo: max. 11,2 mm

Schaltpunkt:
Operation position Ls: 9,6 ±1,5 mm

Differenzweg:
Movement differential: max. 0,8 mm

Betätigungskraft:
Actuating force: max. 0,65 N

Überhubstellung:
Total travel position Le: min. 8,1 mm

Rückschaltkraft:
Release force: min. 0,1 N

Schutzart:
Degree of protection: IP 40

Kontakte:
Contacts: Silber-Legierung
Silver alloy

Anschlüsse:
Terminals: Messing, Silber-flash
Brass, silver flash

Mech. Lebensdauer:
Mechanical Life: 1E6

Anerkannte Standards:
Approved standards:

3.0A/125-250 VAC 6E3 / CO (NC/NO)



0.5A/250 VAC 5E4 / CO

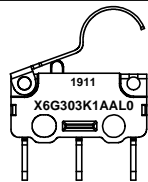


2.0A/250 VAC 1E4 / NO/NC

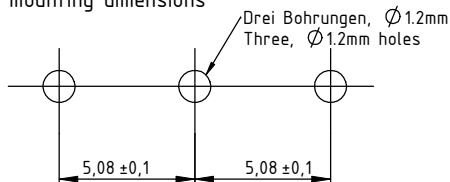
Bedruckung Printing

Produktions-Datum: KW Jahr
Manufacturing date: CW Year

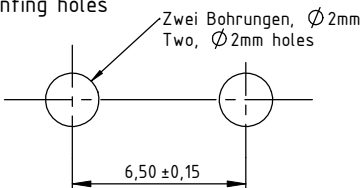
Typenschlüssel
Type code



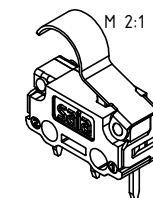
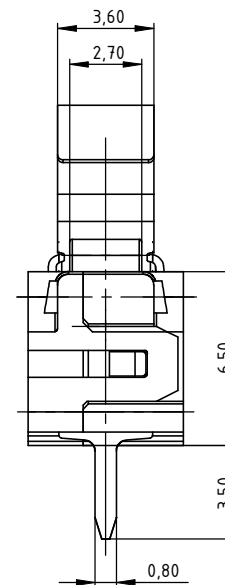
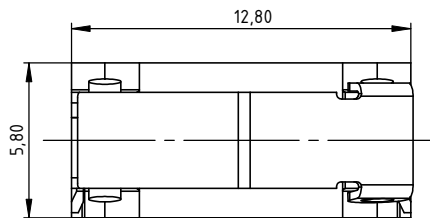
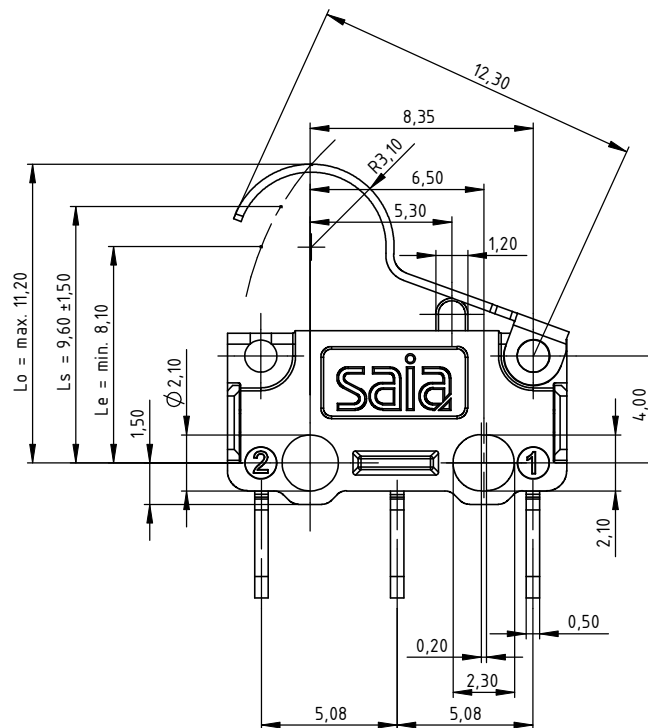
Platinen-Einbaumaße PCB mounting dimensions



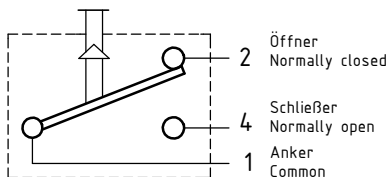
Befestigungsbohrungen Mounting holes



Einbauzeichnung Installation Drawing



Schaltbild Circuit diagram



Zur Freigabe durch den Kunden
For approval by customer

Allgemeintoleranzen nach DIN ISO 2768-1 (Auszug) general tolerances see DIN ISO 2768-1 (abridgement)					
Toleranzklasse grade of tolerance	0,5 bis/to 3	über/over 3 bis/to 6	über/over 6 bis/to 30	über/over 30 bis/to 120	über/over 120 bis/to 400
f (fein/fine)	±0.05	±0.05	±0.1	±0.15	±0.2
m (mittel/middle)	±0.1	±0.1	±0.2	±0.3	±0.5

DWN. BY de04frel0		CHK. BY de04fage0		APP. BY	
Date (yyyymmdd) 07.07.2011		Date (yyyymmdd) 20.08.2012		Date (yyyymmdd)	
MATERIAL:				Project-No.: E2544	
FINISH:				Type: X6	
General Tolerance: ISO 2768-1 Class m (Unless specified)				ALL DIMENSIONS ARE IN MILLIMETRES	
JOHNSON ELECTRIC				SCALE 5:1 (2:1)	
JOHNSON ELECTRIC GROUP OF COMPANIES (JOHNSON ELECTRIC)				TITLE Ultraminiature Microswitch	
This document is the Property of Johnson Electric and the information therein contained is confidential. Unauthorised reproduction or other use thereof, whether directly or indirectly, in whole or in part, is strictly prohibited. All products made or otherwise derived directly or indirectly from this document are proprietary to Johnson Electric. © Copyright Johnson Electric Halver GmbH 2011. All rights reserved.				DWG No. X6G303K1AAL0_C	
				SHEET 1 OF 1	
				1434-9CE0017EP	

Für die korrekte Art des Einbaus ist der Anwender verantwortlich!
Responsibility for the proper fitting is taken by the handler!

X-ON Electronics

Largest Supplier of Electrical and Electronic Components

Click to view similar products for [Basic / Snap Action Switches](#) category:

Click to view products by [Saia-Burgess](#) manufacturer:

Other Similar products are found below :

[83228001](#) [01.098.1358.1](#) [602EN1-6B](#) [602EN532](#) [602EN535-RB](#) [602HE5-RB1](#) [604HE162](#) [604HE223-6B](#) [624HE17-RB](#) [6HM89](#) [6PA78-JM](#)
[6SE1](#) [6SX1-H58](#) [70500840](#) [MBD5B1](#) [MBH2731](#) [73-316-0012](#) [79211759](#) [79211923](#) [79218589](#) [7AS12](#) [ML-1155](#) [ML-1376](#) [831010C3.0](#)
[831060C3.TL](#) [831090C2.EL](#) [83131904](#) [84212012](#) [8AS239](#) [8HM73-3](#) [903VB1-PG](#) [914CE1-6G](#) [PL-100](#) [11SM1077-H4](#) [11SM1077-H58](#)
[11SM1-TN107](#) [11SM405](#) [11SM703-T](#) [11SM8423-H2](#) [11SX37-T](#) [11SX48-H58](#) [11SX55-H58](#) [11SM2442-T](#) [11SM76-T](#) [11SM77-H58](#)
[11SM77-T](#) [11SM863-T](#) [11SM866](#) [11SX47-H58](#) [A7CN-1M-1-LEFT](#)