

XG

Snap-action Microswitches

Miniature

XG

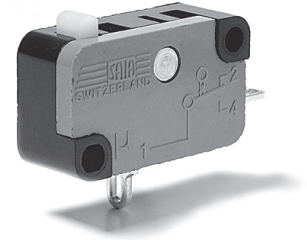
- Characteristics
- Wide number of force variants
 - High mechanical and electrical life
 - Solder terminals
 - Quick connect
 - PCB terminals
 - High temperature versions
 - Wide range of levers

Rating 250 VAC, 26 A

Dimensions (mm) 27.8 × 15.9 × 10.3

Actuator Plunger, plain levers, roller levers, simulated (cam follower) roller lever

Approvals UL, cUL, CSA, ENEC



Preferred Range

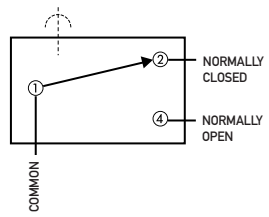
| Ordering Reference | Actuating Force | | Operating pos. | | Terminal | Circuit | Actuator | Contacts | Electrical rating | |
|--------------------|-----------------|-------|----------------|------|----------|---------|--------------|-------------|-------------------|--------|
| | (N) | (ozf) | (mm) | (in) | | | | | ENEC | UL/CSA |
| XGG2-88Z1 | 3.20 | 11.43 | 14.7 | 0.57 | Faston | CO | Plunger | Ag / AgNi10 | 16(6) A | 15 A |
| XGG2-88-J23Z1 | 1.40 | 5.03 | 14.9 | 0.59 | Faston | CO | Plain lever | Ag / AgNi10 | 16(6) A | 15 A |
| XGG2-88-J26Z1 | 0.91 | 3.27 | 14.5 | 0.57 | Faston | CO | Plain lever | Ag / AgNi10 | 16(6) A | 15 A |
| XGG2-88-J27Z1 | 0.65 | 2.34 | 13.7 | 0.54 | Faston | CO | Plain lever | Ag / AgNi10 | 16(6) A | 15 A |
| XGG2-88-S20Z1 | 3.20 | 11.43 | 20.2 | 0.79 | Faston | CO | Roller lever | Ag / AgNi10 | 16(6) A | 15 A |
| XGG2-88-S21Z1 | 1.55 | 5.57 | 20.1 | 0.79 | Faston | CO | Roller lever | Ag / AgNi10 | 16(6) A | 15 A |
| XGG3-88Z1 | 3.20 | 11.43 | 14.7 | 0.57 | Solder | CO | Plunger | Ag / AgNi10 | 16(6) A | 15 A |
| XGG6-88Z1 | 3.20 | 11.43 | 14.7 | 0.57 | Faston | CO | Plunger | Ag / AgNi10 | 16(6) A | 15 A |
| XGC2-88Z1 | 0.80 | 2.86 | 14.7 | 0.57 | Faston | CO | Plunger | Ag / AgNi10 | 12(6) A | 10 A |
| XGC2-88-J23Z1 | 0.35 | 1.26 | 15.0 | 0.59 | Faston | CO | Plain lever | Ag / AgNi10 | 12(6) A | 10 A |
| XGC2-88-S20Z1 | 0.80 | 2.86 | 20.2 | 0.79 | Faston | CO | Roller lever | Ag / AgNi10 | 12(6) A | 10 A |
| XGC6-88Z1 | 0.80 | 2.86 | 14.7 | 0.57 | Faston | CO | Plunger | Ag / AgNi10 | 12(6) A | 10 A |
| XGK2-88Z1 | 1.50 | 5.36 | 14.7 | 0.57 | Faston | CO | Plunger | Ag / AgNi10 | 12(6) A | 12 A |
| XGK2-88-J26Z1 | 0.43 | 1.55 | 14.7 | 0.57 | Faston | CO | Plain lever | Ag / AgNi10 | 12(6) A | 12 A |
| XGK2-88-S21Z1 | 0.71 | 2.55 | 20.2 | 0.80 | Faston | CO | Roller lever | Ag / AgNi10 | 12(6) A | 12 A |
| XGK3-88Z1 | 1.50 | 5.36 | 14.7 | 0.57 | Solder | CO | Plunger | Ag / AgNi10 | 12(6) A | 12 A |
| XGK6-88Z1 | 1.50 | 5.36 | 14.7 | 0.57 | Faston | CO | Plunger | Ag / AgNi10 | 12(6) A | 12 A |
| XG02-88Z1 | 1.20 | 4.29 | 14.5 | 0.57 | Faston | CO | Plunger | Ag / AgNi10 | 16(6) A | 15 A |
| XG02-88-J27Z1 | 0.25 | 0.90 | 13.6 | 0.54 | Faston | CO | Plain lever | Ag / AgNi10 | 16(6) A | 15 A |
| XG02-88-S20Z1 | 1.20 | 4.29 | 20.1 | 0.79 | Faston | CO | Roller lever | Ag / AgNi10 | 16(6) A | 15 A |
| XG06-88Z1 | 1.20 | 4.29 | 14.5 | 0.57 | Faston | CO | Plunger | Ag / AgNi10 | 16(6) A | 15 A |

XG

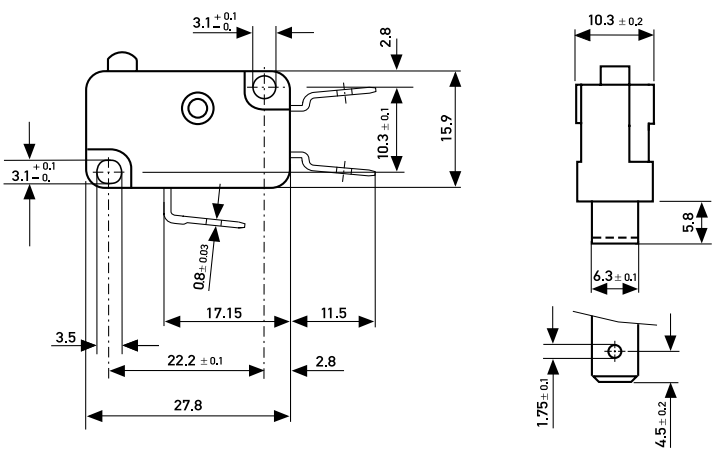
Specifications

| | |
|----------------------|--|
| Housing | Phenolic-Melamine, thermosetting |
| Plunger | POM for T85, PBT for T125, PPS for T150 |
| Mechanism | Heat-treated spring made from beryllium bronze, 4 parallel current path, high contact pressure |
| Functions | Change-over, normally-closed (except XGG and XGK) or normally-open |
| Contacts | Fine silver (Ag), silver nickel (AgNi10), gold-plated 4 µm (Au), silver cadmium oxide (AgCdO) |
| Terminals | Solder faston, screw, PCB and side mounting PCB terminals. RAST 5 terminals, 5.0 mm pitch |
| Temperature range °C | -40°C to +150°C |
| Mechanical life | 2.5 · 10 ⁵ cycles minimum, 50 · 10 ⁶ cycles maximum (Actuation: sinusoidal and maximum up to 80% of the overtravel) |
| Protection | Enclosure IP40 |
| Mounting | Side mounting via mounting holes |
| Actuators | Stainless steel |

Circuit diagram



Dimensions

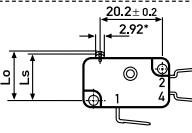
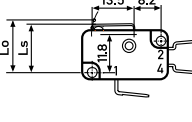
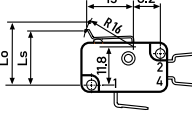
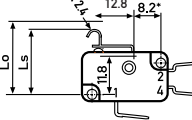
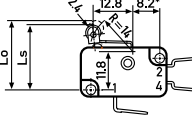
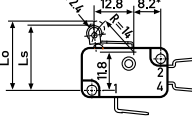


Recommended maximum electrical ratings

| | Voltage (VAC) | Approvals ENEC | UL | (VAC) | | Voltage (VAC) | Approvals ENEC | UL | (VAC) |
|-----------|---------------|----------------|------|---------|-----------|---------------|----------------|-----|---------|
| XGG...-88 | 250 | 16 (6) 5E4 | 15 A | 125/250 | XGT...-86 | 250 | 26 (10) 25E3 | 25A | 125/250 |
| XGA...-88 | 250 | 16 (6) 5E4 | 15 A | 125/250 | XGD...-86 | 250 | 22 (6) 5E4 | 21A | 125/250 |
| XGM...-88 | 250 | 16 (6) 5E4 | 15 A | 125/250 | XGA...-86 | 250 | 20 (8) 5E4 | 15A | 125/250 |
| XGO...-88 | 250 | 16 (6) 5E4 | 15 A | 125/250 | XGM...-86 | 250 | 20 (8) 5E4 | 15A | 125/250 |
| XGB...-88 | 250 | 12 (6) 5E4 | 12 A | 125/250 | XGO...-86 | 250 | 20 (8) 5E4 | 15A | 125/250 |
| XGC...-88 | 250 | 12 (6) 5E4 | 10 A | 125/250 | XGA...-86 | 400 | 10 (6) 5E4 | - | - |
| XGH...-88 | 250 | 12 (6) 5E4 | 10 A | 125/250 | XGG...-86 | 400 | 10 (6) 5E4 | - | - |
| XGK...-88 | 250 | 12 (6) 5E4 | 12 A | 125/250 | XGM...-86 | 400 | 10 (6) 5E4 | - | - |
| XG...-88 | 400 | 3 (2) 5E4 | | | XGO...-86 | 400 | 10 (6) 5E4 | - | - |

XG

Operating Characteristics

| Actuator | Reference | Actuating Force | | Release Force | | Free Position | | Operating Position | | Movement Differential | | Total travelled position | |
|---|--------------------------------|-----------------|-------|---------------|-------|---------------|------|--------------------|--------------|-----------------------|-------|--------------------------|-------|
| | | Maximum (N) | (ozf) | Minimum (N) | (ozf) | Maximum (mm) | (in) | Maximum (mm) | (in) | Maximum (mm) | (in) | Maximum (mm) | (in) |
|  | XGG.. | 3.2 | 11.43 | 0.4 | 1.43 | 15.75 | 0.62 | 14.7 | 0.57 | 0.35 | 0.013 | 13.2 | 0.519 |
| | XGA.. | 3.2 | 11.43 | 0.6 | 2.14 | 15.75 | 0.62 | 14.7 | 0.57 | 0.15 | 0.006 | 13.2 | 0.519 |
| | XGM.. | 2 | 7.14 | 0.5 | 1.79 | 15.6 | 0.61 | 14.5 | 0.57 | 0.35 | 0.013 | 13.7 | 0.539 |
| | XGO.. | 1.2 | 4.29 | 0.1 | 0.36 | 15.6 | 0.61 | 14.5 | 0.57 | 0.35 | 0.013 | 13.7 | 0.539 |
| | XGK.. | 1.5 | 5.36 | 0.2 | 0.71 | 15.75 | 0.62 | 14.7 | 0.57 | 0.35 | 0.013 | 13.2 | 0.519 |
| | XGB.. | 1.5 | 5.36 | 0.3 | 1.07 | 15.75 | 0.62 | 14.7 | 0.57 | 0.15 | 0.006 | 13.2 | 0.519 |
| | XGC.. | 0.8 | 2.86 | 0.1 | 0.36 | 15.75 | 0.62 | 14.7 | 0.57 | 0.15 | 0.006 | 13.2 | 0.519 |
| | XGH.. | 0.45 | 1.61 | 0.05 | 0.18 | 15.6 | 0.61 | 14.5 | 0.57 | 0.35 | 0.013 | 13.7 | 0.539 |
| | XGD.. | 1.7 | 6.07 | 0.15 | 0.54 | 15.75 | 0.62 | 14.7 | 0.57 | 0.15 | 0.006 | 13.2 | 0.519 |
|  | XGG.. | 3.2 | 11.43 | 0.36 | 1.29 | 16.5 | 0.64 | 15.1 ± 0.5 | 0.59 ± 0.019 | 0.4 | 0.015 | 14 | 0.551 |
| | XGA.. | 3.2 | 11.43 | 0.54 | 1.93 | 16.5 | 0.64 | 15.1 ± 0.5 | 0.59 ± 0.019 | 0.2 | 0.007 | 14 | 0.551 |
| | XGM.. | 2 | 7.14 | 0.45 | 1.61 | 16.5 | 0.64 | 15 ± 0.5 | 0.59 ± 0.019 | 0.4 | 0.015 | 14.4 | 0.566 |
| | XGO.. | 1.2 | 4.29 | 0.09 | 0.34 | 16.5 | 0.64 | 15 ± 0.5 | 0.59 ± 0.019 | 0.4 | 0.015 | 14.4 | 0.566 |
| | XGK.. | 1.5 | 5.36 | 0.18 | 0.64 | 16.5 | 0.64 | 15.1 ± 0.5 | 0.59 ± 0.019 | 0.4 | 0.015 | 14 | 0.551 |
| | XGB.. | 1.5 | 5.36 | 0.27 | 0.96 | 16.5 | 0.64 | 15.1 ± 0.5 | 0.59 ± 0.019 | 0.2 | 0.007 | 14 | 0.551 |
| | XGC.. | 0.8 | 2.86 | 0.09 | 0.32 | 16.5 | 0.64 | 15.1 ± 0.5 | 0.59 ± 0.019 | 0.2 | 0.007 | 14 | 0.551 |
| | XGH.. | 0.45 | 1.61 | 0.04 | 0.14 | 16.5 | 0.64 | 15 ± 0.5 | 0.59 ± 0.019 | 0.4 | 0.015 | 14.4 | 0.566 |
| | Width of lever 7 mm/0.28 in | | | | | | | | | | | | |
|  | XGG.. | 2.6 | 9.29 | 0.32 | 1.14 | 19.2 | 0.75 | 17.5 ± 0.7 | 0.68 ± 0.027 | 0.45 | 0.017 | 16.4 | 0.645 |
| | XGA.. | 2.6 | 9.29 | 0.48 | 1.71 | 19.2 | 0.75 | 17.5 ± 0.7 | 0.68 ± 0.027 | 0.2 | 0.007 | 16.4 | 0.645 |
| | XGM.. | 1.65 | 5.89 | 0.4 | 1.43 | 19.2 | 0.75 | 17.3 ± 0.7 | 0.68 ± 0.027 | 0.45 | 0.017 | 16.9 | 0.665 |
| | XGO.. | 1 | 3.57 | 0.08 | 0.29 | 19.2 | 0.75 | 17.3 ± 0.7 | 0.68 ± 0.027 | 0.45 | 0.017 | 16.9 | 0.665 |
| | XGK.. | 1.25 | 4.46 | 0.16 | 0.57 | 19.2 | 0.75 | 17.5 ± 0.7 | 0.68 ± 0.027 | 0.45 | 0.017 | 16.4 | 0.645 |
| | XGB.. | 1.25 | 4.46 | 0.24 | 0.86 | 19.2 | 0.75 | 17.5 ± 0.7 | 0.68 ± 0.027 | 0.2 | 0.007 | 16.4 | 0.645 |
| | XGC.. | 0.65 | 2.32 | 0.08 | 1.29 | 19.2 | 0.75 | 17.5 ± 0.7 | 0.68 ± 0.027 | 0.2 | 0.007 | 16.4 | 0.645 |
| | XGH.. | 1.37 | 1.32 | 0.04 | 0.14 | 19.2 | 0.75 | 17.3 ± 0.7 | 0.68 ± 0.027 | 0.45 | 0.017 | 16.9 | 0.665 |
| | Width of lever 7 mm/0.28 in | | | | | | | | | | | | |
|  | XGG.. | 3.2 | 11.43 | 0.38 | 1.36 | 21.8 | 0.85 | 20.5 ± 0.6 | 0.81 ± 0.023 | 0.4 | 0.015 | 19.5 | 0.767 |
| | XGA.. | 3.2 | 11.43 | 0.85 | 3.04 | 21.8 | 0.85 | 20.5 ± 0.6 | 0.81 ± 0.023 | 0.2 | 0.007 | 19.5 | 0.767 |
| | XGM.. | 2 | 7.14 | 0.48 | 1.71 | 21.8 | 0.85 | 20.3 ± 0.6 | 0.8 ± 0.023 | 0.4 | 0.015 | 19.8 | 0.779 |
| | XGO.. | 1.2 | 4.29 | 0.09 | 0.32 | 21.8 | 0.85 | 20.1 ± 0.6 | 0.79 ± 0.023 | 0.4 | 0.015 | 19.8 | 0.779 |
| | XGK.. | 1.5 | 5.36 | 0.19 | 0.68 | 21.8 | 0.85 | 20.5 ± 0.6 | 0.81 ± 0.023 | 0.4 | 0.015 | 19.5 | 0.767 |
| | XGB.. | 1.5 | 5.36 | 0.29 | 1.04 | 21.8 | 0.85 | 20.5 ± 0.6 | 0.81 ± 0.023 | 0.2 | 0.007 | 19.5 | 0.767 |
| | XGC.. | 0.8 | 2.86 | 0.09 | 0.32 | 21.8 | 0.85 | 20.5 ± 0.6 | 0.81 ± 0.023 | 0.2 | 0.007 | 19.5 | 0.767 |
| | XGH.. | 0.45 | 1.61 | 0.04 | 0.14 | 21.8 | 0.85 | 20.3 ± 0.6 | 0.8 ± 0.023 | 0.4 | 0.015 | 19.8 | 0.779 |
| | Width of lever 7 mm/0.28 in | | | | | | | | | | | | |
|  | XGG.. | 3.2 | 11.43 | 0.37 | 1.32 | 21.8 | 0.85 | 20.2 ± 0.7 | 0.79 ± 0.027 | 0.4 | 0.015 | 19.3 | 0.759 |
| | XGA.. | 3.2 | 11.43 | 0.56 | 2 | 21.8 | 0.85 | 20.2 ± 0.7 | 0.79 ± 0.027 | 0.2 | 0.007 | 19.3 | 0.759 |
| | XGM.. | 2 | 7.14 | 0.47 | 1.68 | 21.8 | 0.85 | 20.1 ± 0.7 | 0.79 ± 0.027 | 0.4 | 0.015 | 19.7 | 0.775 |
| | XGO.. | 1.2 | 4.29 | 0.09 | 0.32 | 21.8 | 0.85 | 20.1 ± 0.7 | 0.79 ± 0.027 | 0.4 | 0.015 | 19.7 | 0.775 |
| | XGK.. | 1.5 | 5.36 | 0.18 | 0.64 | 21.8 | 0.85 | 20.2 ± 0.7 | 0.79 ± 0.027 | 0.4 | 0.015 | 19.3 | 0.759 |
| | XGB.. | 1.5 | 5.36 | 0.28 | 1 | 21.8 | 0.85 | 20.2 ± 0.7 | 0.79 ± 0.027 | 0.2 | 0.007 | 19.3 | 0.759 |
| | XGC.. | 0.8 | 2.86 | 0.09 | 0.32 | 21.8 | 0.85 | 20.2 ± 0.7 | 0.79 ± 0.027 | 0.2 | 0.007 | 19.3 | 0.759 |
| | XGH.. | 0.45 | 1.61 | 0.04 | 0.14 | 21.8 | 0.85 | 20.1 ± 0.7 | 0.79 ± 0.027 | 0.4 | 0.015 | 19.7 | 0.775 |
| | Width of roller 6.6 mm/0.26 in | | | | | | | | | | | | |
|  | XGG.. | 3.2 | 11.43 | 0.37 | 1.32 | 21.8 | 0.85 | 20.2 ± 0.7 | 0.79 ± 0.027 | 0.4 | 0.015 | 19.3 | 0.759 |
| | XGA.. | 3.2 | 11.43 | 0.56 | 2 | 21.8 | 0.85 | 20.2 ± 0.7 | 0.79 ± 0.027 | 0.2 | 0.007 | 19.3 | 0.759 |
| | XGM.. | 2 | 7.14 | 0.05 | 1.68 | 21.8 | 0.85 | 20.1 ± 0.7 | 0.79 ± 0.027 | 0.4 | 0.015 | 19.7 | 0.775 |
| | XGO.. | 1.2 | 4.29 | 0.09 | 0.32 | 21.8 | 0.85 | 20.1 ± 0.7 | 0.79 ± 0.027 | 0.4 | 0.015 | 19.7 | 0.775 |
| | XGK.. | 1.5 | 5.36 | 0.18 | 0.64 | 21.8 | 0.85 | 20.2 ± 0.7 | 0.79 ± 0.027 | 0.4 | 0.015 | 19.3 | 0.759 |
| | XGB.. | 1.5 | 5.36 | 0.28 | 1 | 21.8 | 0.85 | 20.2 ± 0.7 | 0.79 ± 0.027 | 0.2 | 0.007 | 19.3 | 0.759 |
| | XGC.. | 0.8 | 2.86 | 0.09 | 0.32 | 21.8 | 0.85 | 20.2 ± 0.7 | 0.79 ± 0.027 | 0.2 | 0.007 | 19.3 | 0.759 |
| | XGH.. | 0.45 | 1.61 | 0.04 | 0.14 | 21.8 | 0.85 | 20.1 ± 0.7 | 0.79 ± 0.027 | 0.4 | 0.015 | 19.7 | 0.775 |
| | Width of roller 6.6 mm/0.26 in | | | | | | | | | | | | |

1) Lever distance 8.2 (0.32) for lever position -20, lever position (-J20, L20, S20, M20)
Lever distance 14.0 (0.55) for lever position -40, lever position (-J40, L40, S40, M40)

* For high temperature T125° C/T 150° C (ENEC, UL)

XG

Ordering Reference

| | | | | | |
|---|-------------|------------------------------|-----------------------------|------------------------------------|---------|
| Type | XGG.. | 3.2 N | 11.43 ozf | | |
| Actuating | XGA../XGT.. | 3.2 N | 11.43 ozf | | |
| Characteristic | XGM.. | 2.0 N | 7.14 ozf | | |
| | XGO.. | 1.2 N | 4.29 ozf | | |
| | XGK.. | 1.5 N | 5.36 ozf | | |
| | XGB.. | 1.5 N | 5.36 ozf | | |
| | XGC.. | 0.8 N | 2.86 ozf | | |
| | XGH.. | 0.45 N | 1.61 ozf | | |
| | XGD.. | 1.7 N | 6.07 ozf | | |
| Circuit | No digit | Change-over | | | |
| | 4 | Normally closed (NC) | | | |
| | 5 | Normally open (NO) | | | |
| Terminals | 02 | Faston | 6.3 × 0.8 | | |
| | 03 | Solder | 1.7 × 3.2 | | |
| | 06 | Faston | 4.8 × 0.5 | | |
| | 10 | Faston | 4.8 × 0.8 | | |
| | 12 | Short solder | Ø 2.3 | | |
| | 15 | RAST 5 | 6.3 × 0.8 | | |
| Other types of terminals are available on request | | | | | |
| Version | No digit | ENEC | UL | Number of operations at rated load | |
| | | | | Europe | UL |
| | A | T85 | T90 | 50.000 | 6.000 |
| | W | T150 | T150 | 50.000 | 6.000 |
| | AW | T150 | T150 | 50.000 | 100.000 |
| | B | T85 | T90 | 10.000 | 6.000 |
| | V | T125 | T130 | 50.000 | 6.000 |
| | AV | T125 | T130 | 50.000 | 100.000 |
| | C | T85 | T90 | 25.000 | 6.000 |
| | Contacts | -88 | Ag / AgNi10 | | |
| | | -81 | Gold-plated 4 µm (Au) on Ag | | |
| -86 | | Ag / Ag CdO | | | |
| Actuators | No digit | Plunger | | | |
| | J20/J40 | Plain lever | 13.5 mm | | |
| | J22/J42 | Plain lever | 24.0 mm | | |
| | J23/J43 | Plain lever | 27.8 mm | | |
| | J27/J47 | Plain lever | 60.0 mm | | |
| | M20/M40 | Plain lever formed | 14.7 mm | | |
| | L20/L40 | Cam follower | 12.8 mm | | |
| | L21/L41 | Cam follower | 26.2 mm | | |
| | S20/S40 | Roller lever | 12.8 mm | | |
| | T20/T40 | Roller lever, 150° C version | 12.8 mm | | |
| Other actuators available on request | | | | | |



X-ON Electronics

Largest Supplier of Electrical and Electronic Components

Click to view similar products for [Basic / Snap Action Switches](#) category:

Click to view products by [Saia-Burgess](#) manufacturer:

Other Similar products are found below :

[83228001](#) [01.098.1358.1](#) [602EN1-6B](#) [602EN532](#) [602EN535-RB](#) [602HE5-RB1](#) [604HE162](#) [604HE223-6B](#) [624HE17-RB](#) [6HM89](#) [6PA78-JM](#)
[6SE1](#) [6SX1-H58](#) [70500840](#) [MBD5B1](#) [MBH2731](#) [73-316-0012](#) [79211759](#) [79211923](#) [79218589](#) [7AS12](#) [ML-1155](#) [ML-1376](#) [831010C3.0](#)
[831060C3.TL](#) [831090C2.EL](#) [83131904](#) [84212012](#) [8AS239](#) [8HM73-3](#) [903VB1-PG](#) [914CE1-6G](#) [PL-100](#) [11SM1077-H4](#) [11SM1077-H58](#)
[11SM1-TN107](#) [11SM405](#) [11SM703-T](#) [11SM8423-H2](#) [11SX37-T](#) [11SX48-H58](#) [11SX55-H58](#) [11SM2442-T](#) [11SM76-T](#) [11SM77-H58](#)
[11SM77-T](#) [11SM863-T](#) [11SM866](#) [11SX47-H58](#) [A7CN-1M-1-LEFT](#)