

ACCLIMATE™

ACRK-16-02-G-S-B1-P-1

ACRK-16-01-G-T-B1-P-1

ACRK-16-06-G-T-B1-M-1

ACRK-16 SERIES

16 mm IP68 FIELD TERMINATION KIT

SPECIFICATIONS

For complete specifications and processing guidelines see www.samtec.com?ACRK-16

Terminal Material: Brass

Contact Material: Brass/BeCu

Operating Temp Range: -10 °C to +105 °C

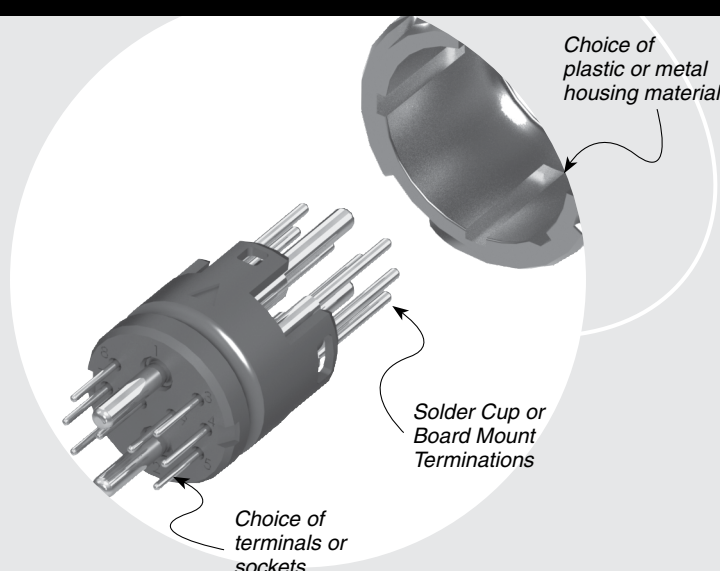
Housing: -P: Thermoplastic
 -M: Zinc Alloy

RoHS Compliant: Yes

Mates with:
 ACP-16, ACPK-16

CURRENT RATING		
LEAD STYLE	PINS POWERED	CCC per PIN
-01	14	1.3 A
-02	10	2.6 A
-06	2 (plus 8 signal pins powered @ 1A)	11.6 A

For general reference only. See www.samtec.com?ACRK-16 for complete test data or contact AccliMate@samtec.com for applications requiring higher current carrying capacity.



DUST CAPS

- DCA-ACR-16-M-X (Metal)
- DCA-ACR-16-P-X (Plastic)



• Visit sealedio.samtec.com for a complete list of sealed systems

ACRK - 16 - LEAD STYLE - PLATING - GENDER - TERMINATION - HOUSING MATERIAL - KEY

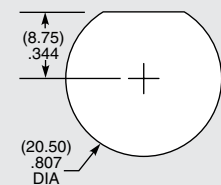
LEAD STYLE	PLATING	GENDER	TERMINATION	HOUSING MATERIAL	KEY
<p>-01 = 0.5 mm DIA (14) (26-30 AWG)</p> <p>-02 = 1.0 mm DIA (10) (20-24 AWG)</p> <p>-06 = 1.5 mm DIA (2) (14-18 AWG) + 0.5 mm DIA (8) (26-30 AWG)</p>	<p>-G = 10 μm (0.25 μm) Gold over 50 μm (1.27 μm) Ni on contact</p>	<p>-T = Terminal</p> <p>-S = Socket</p>	<p>-C = Solder Cup</p> <p>-B1 = (1.60 mm) .062" Board Mount</p>	<p>-P = Plastic</p> <p>-M = Metal</p>	<p>-1 = Orange, 45°</p>

Diagram showing connector details and dimensions:

- (0.5) .020 DIA (14) - Dimension for lead diameter (for styles -01 and -02)
- (1.0) .040 DIA (10) - Dimension for lead diameter (for style -02)
- (1.5) .060 DIA (2) - Dimension for lead diameter (for style -06)

Diagrams for -B1 END SHOWN and -C END SHOWN showing termination options.

PANEL OPENING



NOTE

For complete specifications and processing guidelines see www.samtec.com?ACRK-16

Note:
 Some lengths, styles and options are non-standard, non-returnable.

X-ON Electronics

Largest Supplier of Electrical and Electronic Components

Click to view similar products for [Standard Circular Connector](#) category:

Click to view products by [Samtec](#) manufacturer:

Other Similar products are found below :

[5M2530B10P](#) [600259N006](#) [600273N007](#) [6134-336-13149](#) [6134-337-11149](#) [6134-337-2390](#) [6134-341-17149](#) [6280-4SG-516](#) [6280-7SG-3DC](#)
[6290](#) [6291A](#) [66200A-10](#) [680-SMG](#) [681-PMG](#) [CXS3102A14S2P](#) [CXS3102A181S](#) [7251-5SG-300](#) [7271-6SG-300](#) [7282-3PG-300-CH3](#) [75-](#)
[474618-01S](#) [75-474618-04P](#) [75-474618-04S](#) [799539-000](#) [MI8-SE](#) [805-005-07NF11-19PC](#) [805-005-07NF15-7PA](#) [8280-4PG-516](#) [8280-7PG-](#)
[519](#) [8282-5PG-519](#) [836783-1](#) [MP-4102-25P-C](#) [862256-1](#) [864019-2](#) [866857-1](#) [867865-1](#) [PT01SP-14-18P](#) [PT08P-14-5S](#) [PTSF06SE-14-12S](#)
[120-1833-000](#) [QCM019PC2DC012B](#) [1-2069279-1](#) [121583-0217](#) [121667-0020](#) [129591AU](#) [1000B BULK](#) [RD10A16-19-P6CS051/1](#)
[RD10A20-31-P8CS051/1](#) [RD16A14-12-S6CS051/2](#) [1301240290](#) [1301240347](#) [1301860202](#)