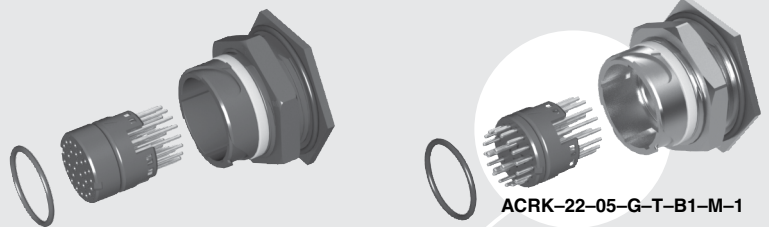


# ACCLIMATE™



ACRK-22-01-G-T-B1-P-1

ACRK-22-05-G-T-B1-M-1

## ACRK-22 SERIES

# 22 mm IP68 FIELD TERMINATION KIT

### SPECIFICATIONS

For complete specifications and processing guidelines see [www.samtec.com?ACRK-22](http://www.samtec.com?ACRK-22)

**Terminal Material:** Brass

**Contact Material:** Brass/BeCu

**Operating Temp Range:** -10 °C to +105 °C

**Housing:** -P: Thermoplastic

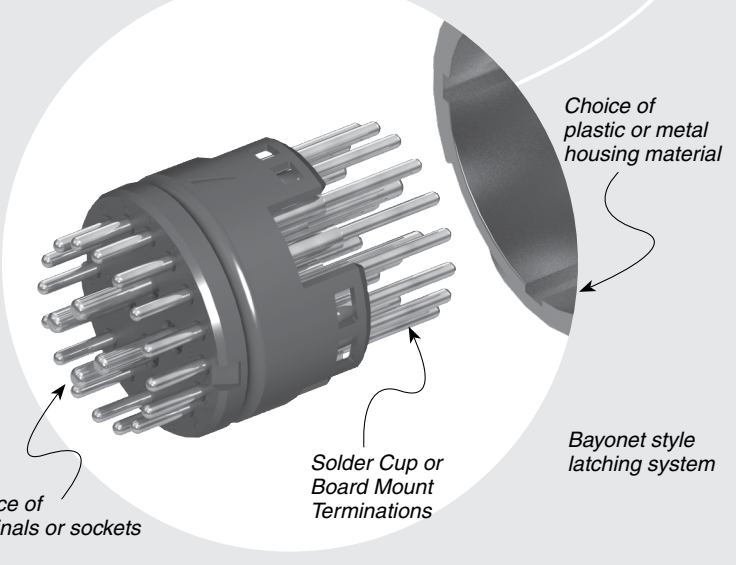
-M: Zinc Alloy

**RoHS Compliant:** Yes

Mates with:  
ACP-22, ACPK-22

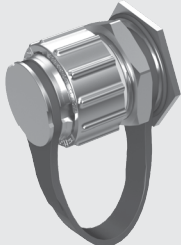
CURRENT RATING		
LEAD STYLE	PINS POWERED	CCC per PIN
-01	30	2.0 A
-02	20	2.3 A
-03	8	8.3 A

For general reference only. See [www.samtec.com?ACRK-22](http://www.samtec.com?ACRK-22) for complete test data or contact [AcciMate@samtec.com](mailto:AcciMate@samtec.com) for applications requiring higher current carrying capacity.



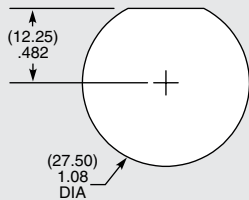
### DUST CAPS

- DCA-ACR-22-M-X (Metal)
- DCA-ACR-22-P-X (Plastic)



• Visit [sealedio.samtec.com](http://sealedio.samtec.com) for a complete list of sealed systems

### PANEL OPENING



### NOTE

For complete specifications and processing guidelines see [www.samtec.com?ACRK-22](http://www.samtec.com?ACRK-22)

**Note:** Some lengths, styles and options are non-standard, non-returnable.

ACRK	22	LEAD STYLE	PLATING	GENDER	TERMINATION	HOUSING MATERIAL	KEY
		<b>-01</b> = 1.0 mm DIA (30) (20-24 AWG)  <b>-02</b> = 1.0 mm DIA (20) (20-24 AWG)  <b>-03</b> = 1.5 mm DIA (8) (14-18 AWG)	<b>-G</b> = 10 μm (0.25 μm) Gold over 50 μm (1.27 μm) Ni on contact	<b>-T</b> = Terminal  <b>-S</b> = Socket	<b>-C</b> = Solder Cup  <b>-B1</b> = (1.60 mm) .062" Board Mount	<b>-P</b> = Plastic  <b>-M</b> = Metal	<b>-1</b> = Orange, 45°

(1.0) .040 DIA (30)

-01

(1.0) .040 DIA (20)

-02

(1.5) .060 DIA (8)

-03

-C END SHOWN

## X-ON Electronics

Largest Supplier of Electrical and Electronic Components

*Click to view similar products for [Standard Circular Connector](#) category:*

*Click to view products by [Samtec](#) manufacturer:*

Other Similar products are found below :

[5M2530B10P](#) [600259N006](#) [600273N007](#) [6134-336-13149](#) [6134-337-11149](#) [6134-337-2390](#) [6134-341-17149](#) [6280-4SG-516](#) [6280-7SG-3DC](#)  
[6290](#) [6291A](#) [66200A-10](#) [680-SMG](#) [681-PMG](#) [CXS3102A14S2P](#) [CXS3102A181S](#) [7251-5SG-300](#) [7271-6SG-300](#) [7282-3PG-300-CH3](#) [75-](#)  
[474618-01S](#) [75-474618-04P](#) [75-474618-04S](#) [799539-000](#) [MI8-SE](#) [805-005-07NF11-19PC](#) [805-005-07NF15-7PA](#) [8280-4PG-516](#) [8280-7PG-](#)  
[519](#) [8282-5PG-519](#) [836783-1](#) [MP-4102-25P-C](#) [862256-1](#) [864019-2](#) [866857-1](#) [867865-1](#) [PT01SP-14-18P](#) [PT08P-14-5S](#) [PTSF06SE-14-12S](#)  
[120-1833-000](#) [QCM019PC2DC012B](#) [1-2069279-1](#) [121583-0217](#) [121667-0020](#) [129591AU](#) [1000B BULK](#) [RD10A16-19-P6CS051/1](#)  
[RD10A20-31-P8CS051/1](#) [RD16A14-12-S6CS051/2](#) [1301240290](#) [1301240347](#) [1301860202](#)