

DO NOT SCALE FROM THIS PRINT

NOTES:

1. MINIMUM PUSHOUT FORCES:
APA ASSEMBLY: 5 LBS.
APO ASSEMBLY: 5 LBS.
2. MAXIMUM ALLOWABLE BOW:
.003 INCH PER INCH.
3. $\text{\textcircled{C}}$ REPRESENTS A CRITICAL DIMENSION
4. MAXIMUM HEIGHT VARIATION BETWEEN PINS:
.010 [0.25] (SEE SHEET 2).
5. PLUG FIT FOR PT-ASP-149117-XX WILL BE TIGHT AND WILL REQUIRE INSERTION AND THEN A ROTATION TO ACHIEVE ORIENTATION. THIS IS NECESSARY FOR ZERO CONTACT WITH THE PINS.

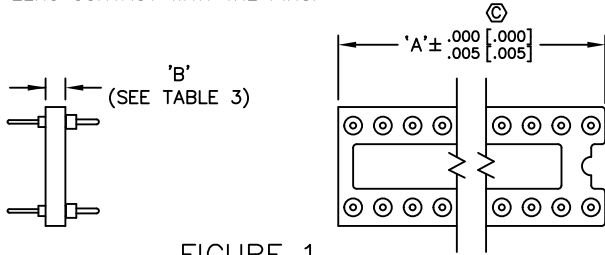


FIGURE 1

(* : CUT TO LENGTH IN FIG 1)
(*** = EXISTING CUSTOMERS ONLY)

TABLE 1

SERIES	POSITION	APA	APO
-3	06	N/R	N/R
	08	SBOA-308	SBO-308
	10	N/R	N/R
	12	N/R	N/A
	14	SBOA-314	SBO-314
	16	SBOA-316	SBO-316
	18	SBOA-318	SBO-318
	20	SBOA-320	SBO-320
	22	SBOA-324*	SBO-324*
-4	24	SBOA-324	SBO-324
	***28	ICA-328-V	N/R
-6	22	SBOA-422	SBO-422
	24	N/R	N/A
	10	N/R	N/R
	14	N/R	N/R
	16	N/R	N/R
	18	N/R	N/R
	20	N/R	N/R
	22	N/R	N/R
	24	SBOA-624	SBO-624
-9	28	SBOA-628	SBO-628
	32	SBOA-632	SBO-632
	40	SBOA-640	SBO-640
	48	SBOA-648	N/R
	14	N/R	N/R
-9	24	N/R	N/R
	28	N/R	N/R
	32	N/R	N/R
	40	N/R	N/R
	48	N/R	N/R
	50	N/R	N/R
	64	N/R	N/R

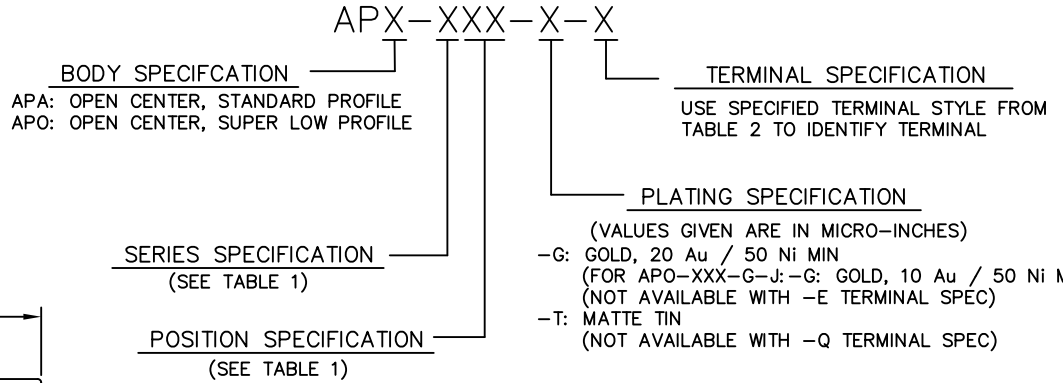
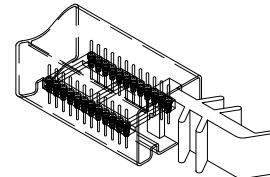


TABLE 5

REF. PART No.	'A'
APA-322-XXX	1.100 [27.94]
APO-312-XXX	.600 [15.24]
APO-322-XXX	1.100 [27.94]

TABLE 3

SERIES	'B'
APA	.100 [2.54]
APO	.050 [1.27]



PACKAGING VIEW

PACKAGING TABLE

SERIES	TERMINAL	TUBE	PLUG
APX-3XX	M	PT-1-24-01-70	TP-07 (2)
APX-3XX	J	PT-3-24-01-01	TP-03 (2)
APX-3XX	N	PT-1-24-01-52	TP-13 (2)
APX-3XX	Q	PT-1-24-01-56	TP-31 (2)
APX-4XX	N	PT-1-24-01-110	TP-13
APX-6XX	Q	PT-1-24-02-56	TP-04 (2)
APX-6XX	P	PT-1-24-03-56	TP-28 (2)
APX-6XX	M	PT-1-24-02-74	TP-28 (2)
APX-6XX	N	PT-ASP-149117-XX	TP-25 (2)

UNLESS SPECIFIED "PACKAGE IN BEAD BOARD" PER THE SHOP


UNLESS OTHERWISE SPECIFIED, DIMENSIONS ARE IN MM. TOLERANCES ARE:
DECIMALS ANGLES
X.XX±0.25 ±3
X.XXX±0.13
X.XXXX±0.05

PROPRIETARY NOTE
THIS DOCUMENT CONTAINS CONFIDENTIAL AND PROPRIETARY INFORMATION AND ALL DESIGN, MANUFACTURING, REPRODUCTION, USE, PATENT RIGHTS AND SALES RIGHTS ARE EXPRESSLY RESERVED BY SAMTEC, INC. THIS DOCUMENT SHALL NOT BE DISCLOSED, IN WHOLE OR PART, TO ANY UNAUTHORIZED PERSON OR ENTITY NOR REPRODUCED, TRANSMITTED OR INCORPORATED IN ANY OTHER PRODUCT IN ANY MANNER WITHOUT THE EXPRESS WRITTEN CONSENT OF SAMTEC, INC.

DO NOT SCALE DRAWING
INSULATOR: PBT 30% Glass Filled (UL 94V-0) Black
CONTACT : Phosphor Bronze

SHEET SCALE: 1:2

CODE: 55322



520 PARK EAST BLVD. NEW ALBANY, IN 47150
(812) 944-6733 P.O. BOX 1147 TWX: 810-540-4085

DESCRIPTION: AP ASSEMBLY

DWG. NO. APX-XXX-X-X

BY: YINGLING 4-20-85 SHEET 1 OF 2

X-ON Electronics

Largest Supplier of Electrical and Electronic Components

Click to view similar products for [IC & Component Sockets](#) category:

Click to view products by [Samtec](#) manufacturer:

Other Similar products are found below :

[714-43-102-31-012000](#) [0066-3-17-15-30-14-02-0](#) [0134-0-15-15-32-27-04-0](#) [614-DG5](#) [6527-0-00-15-00-00-03-0](#) [670](#) [672](#) [673](#) [712-93-120-41-001000](#) [714-93-104-31-018000](#) [8059-4G1-LF](#) [807-22-001-10-001101](#) [807-22-001-10-003101](#) [807-22-001-10-004101](#) [807-22-001-10-006101](#) [807-22-001-30-011101](#) [807-22-001-30-012101](#) [807-22-001-30-013101](#) [807-22-001-30-014101](#) [8-1437531-4](#) [8150-6P10](#) [833-93-034-10-001000](#) [835-43-014-10-001000](#) [851-41-006-10-001000](#) [851-43-008-20-001000](#) [851-43-014-20-001000](#) [851-93-006-20-001000](#) [851-93-010-20-001000](#) [853-43-020-10-001000](#) [86.010.0053.0](#) [116-43-306-41-003000](#) [116-43-308-41-007000](#) [116-87-308-41-007101](#) [PX-68LCC](#) [PX-84LCC](#) [121-13-318-41-001000](#) [121-13-320-41-001000](#) [121-13-308-41-001000](#) [123-43-314-41-801000](#) [123-43-420-41-001000](#) [123-43-636-41-001000](#) [123-87-320-41-001101](#) [122-13-316-41-001000](#) [123-13-624-41-001000](#) [123-43-306-41-001000](#) [123-43-322-41-801000](#) [123-43-428-41-001000](#) [123-43-624-41-001000](#) [12-3513-11](#) [123-91-320-41-001000](#)