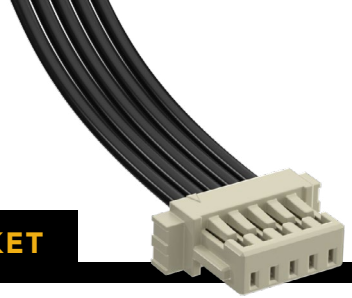


(1.00 mm) .0394" PITCH • SINGLE ROW DISCRETE WIRE SOCKET



SERIES	PINS PER ROW	WIRE GAUGE	PLATING OPTION	ASSEMBLED LENGTH	OPTION
--------	--------------	------------	----------------	------------------	--------

S1SS
= Single Row PVC Cable

S1SST
= Single Row Blue *Teflon® Cable (28 AWG only)

-02, -03, -05, -07, -10 -15, -20
(Standard sizes)

-28
= 28 AWG

-28C
= 28 AWG Color Coded Cable (S1SS only)

-30
= 30 AWG

-30C
= 30 AWG Color Coded Cable (S1SS only)

-GF
= 3 μm (0.07 μm) Gold on contact and tail

-"XX.XX"
= Assembled Length in Inches (45.72 mm) 01.80" min.

(Required Callout)

-L
= Single Ended With Latch

-L1
= Double Ended Latch down, straight (Pin 1 to Pin 1)

-L3
= Double Ended Latch up, straight (Pin 1 to Pin N)

-S
= Single Ended No Latch

-D-NUS
= Double Ended No Latch, "N" up, straight

-D-NDS
= Double Ended No Latch, "N" down, straight

S1SS(T)
Board Mates:
T1M
Cable Mates:
T1SS(T), T1PS(T)

SPECIFICATIONS

Insulator Material:
Nylon, White (with latch)
Black, LCP (without latch)

Contact Material:
Phosphor Bronze

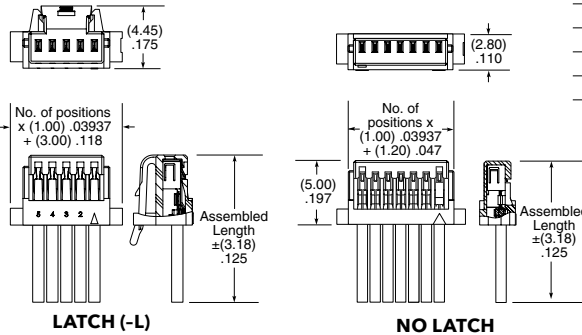
Plating:
Au over 50 μm (1.27 μm) Ni

Operating Temp Range (S1SS(T)/T1M):
-10 °C to +85 °C (PVC)
-40 °C to +125 °C (Teflon®)

Current Rating (28 AWG):
2.7 A per pin (1 pin powered)

Voltage Rating:
250 VAC/353 VDC

Wire: 28 or 30 AWG



S1SS CABLE COLOR CODING	
PIN	COLOR
1	BROWN
2	RED
3	ORANGE
4	YELLOW
5	GREEN
6	BLUE
7	VIOLET
8	GRAY
9	WHITE
10	BLACK
ETC	REPEAT

*DuPont™ Teflon® is a registered trademark of the E.I. du Pont de Nemours and Company or its affiliates.

Note:
Teflon® cable is intended for crimp only. Contact Samtec for solderable cable applications.

View complete specifications at: samtec.com?S1SS & samtec.com?S1SST

SERIES	NO. OF POSITIONS	LATCH	SERIES	01	PLATING
--------	------------------	-------	--------	----	---------

ISS1
= Single Row Body

-02, -03, -05, -07, -10, -15, -20

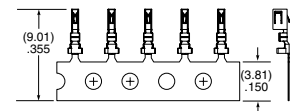
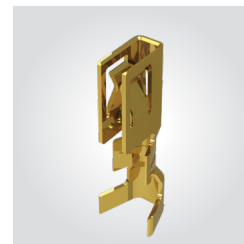
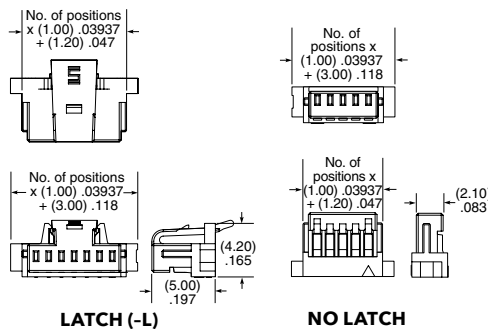
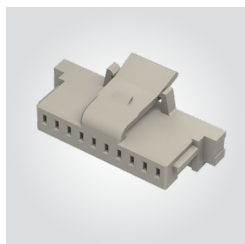
(Leave blank for no latch)

CC09R
= Contact, Full Reel (25,000 Parts per Reel)

-GF
= 3 μm (0.07 μm) Gold contact and tail

-L
= Positive Latch

CC09M
= Contact, Mini Reel (5,000 Parts per Reel)



TOOLING

Hand Tool: CAT-HT-309-2830-12
Clamp for mounting hand tool: CAT-HT-MNT-01

Mini Applicator: CAT-MC-309-2830-XX-01

Note:
Some lengths, styles and options are non-standard, non-returnable.

View complete specifications at: samtec.com?ISS1, samtec.com?CC09R & samtec.com?CC09M

X-ON Electronics

Largest Supplier of Electrical and Electronic Components

Click to view similar products for [Headers & Wire Housings](#) category:

Click to view products by [Samtec](#) manufacturer:

Other Similar products are found below :

[892-18-020-10-001101](#) [58102-G61-06LF](#) [582553-1](#) [0009485154](#) [009176003701906](#) [0050291907](#) [LY20-4P-DT1-P1E-BR](#) [02.125.8002.8](#)
[609-3404](#) [61062-3](#) [61082-181009](#) [622-3653LF](#) [63453-116](#) [636-1030](#) [636-1427](#) [636-3427](#) [636-4007](#) [641938-9](#) [641991-4](#) [644827-2](#) [65817-](#)
[010LF](#) [65817-015LF](#) [65863-015LF](#) [66207-023LF](#) [67095-007LF](#) [67601157](#) [68645-018](#) [68648-049](#) [70.362.1628.0](#) [70-4210](#) [70-4226B](#) [70-](#)
[4853B](#) [707-5020](#) [707-5028](#) [71.350.2428.0](#) [71918-208LF](#) [71961-016LF](#) [733-134](#) [733-162](#) [754199-000](#) [760-3052](#) [787-8014-00](#) [79531-3000](#)
[FCN-360C032-B](#) [FCN-367T-T012/H](#) [FCN-723D010/2](#) [80.063.4001.1](#) [800-90-001-10-001000](#) [800-90-010-10-002000](#) [801-43-002-10-013000](#)