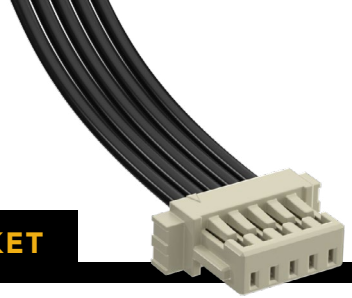


(1.00 mm) .0394" PITCH • SINGLE ROW DISCRETE WIRE SOCKET



| SERIES | PINS PER ROW | WIRE GAUGE | PLATING OPTION | ASSEMBLED LENGTH | OPTION |
|---------------------------------------|---|--|---|--|--|
| S1SS = Single Row PVC Cable | -02, -03, -05, -07, -10 -15, -20 (Standard sizes) | -28 = 28 AWG -28C = 28 AWG Color Coded Cable (S1SS only) -30 = 30 AWG -30C = 30 AWG Color Coded Cable (S1SS only) | -GF = 3 μm (0.07 μm) Gold on contact and tail | -"XX.XX" = Assembled Length in Inches (45.72 mm) 01.80" min. | (Required Callout) -L = Single Ended With Latch -L1 = Double Ended Latch down, straight (Pin 1 to Pin 1) -L3 = Double Ended Latch up, straight (Pin 1 to Pin N) -S = Single Ended No Latch -D-NUS = Double Ended No Latch, "N" up, straight -D-NDS = Double Ended No Latch, "N" down, straight |

S1SS(T)

Board Mates:

T1M

Cable Mates:

T1SS(T), T1PS(T)

SPECIFICATIONS

Insulator Material:

Nylon, White (with latch)
Black, LCP (without latch)

Contact Material:

Phosphor Bronze

Plating:

Au over 50 μm (1.27 μm) Ni

Operating Temp Range (S1SS(T)/T1M):

-10 °C to +85 °C (PVC)

-40 °C to +125 °C (Teflon®)

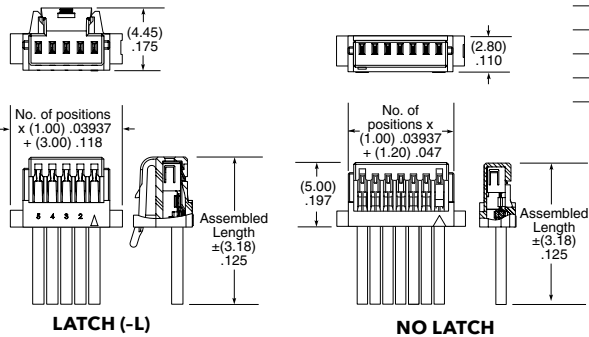
Current Rating (28 AWG):

2.7 A per pin (1 pin powered)

Voltage Rating:

250 VAC/353 VDC

Wire: 28 or 30 AWG



S1SS CABLE COLOR CODING

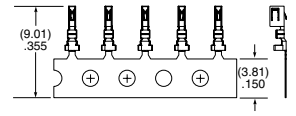
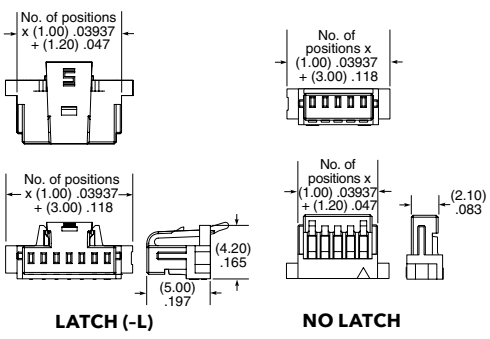
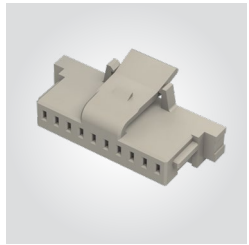
| PIN | COLOR |
|-----|--------|
| 1 | BROWN |
| 2 | RED |
| 3 | ORANGE |
| 4 | YELLOW |
| 5 | GREEN |
| 6 | BLUE |
| 7 | VIOLET |
| 8 | GRAY |
| 9 | WHITE |
| 10 | BLACK |
| ETC | REPEAT |

*DuPont™ Teflon® is a registered trademark of the E.I. du Pont de Nemours and Company or its affiliates.

Note:
Teflon® cable is intended for crimp only. Contact Samtec for solderable cable applications.

View complete specifications at: samtec.com?S1SS & samtec.com?S1SST

| SERIES | NO. OF POSITIONS | LATCH | SERIES | 01 | PLATING |
|----------------------------------|--|---|--|----|--|
| ISS1 = Single Row Body | -02, -03, -05, -07, -10, -15, -20 | (Leave blank for no latch) -L = Positive Latch | CC09R = Contact, Full Reel (25,000 Parts per Reel) | | -GF = 3 μm (0.07 μm) Gold contact and tail |



TOOLING

| | |
|---|--|
| Hand Tool: CAT-HT-309-2830-12 | Mini Applicator: CAT-MC-309-2830-XX-01 |
| Clamp for mounting hand tool: CAT-HT-MNT-01 | |

Note:
Some lengths, styles and options are non-standard, non-returnable.

View complete specifications at: samtec.com?ISS1, samtec.com?CC09R & samtec.com?CC09M

X-ON Electronics

Largest Supplier of Electrical and Electronic Components

Click to view similar products for [Headers & Wire Housings](#) category:

Click to view products by [Samtec](#) manufacturer:

Other Similar products are found below :

[892-18-020-10-001101](#) [58102-G61-06LF](#) [582553-1](#) [0009485154](#) [009176003701906](#) [0050291907](#) [LY20-4P-DT1-P1E-BR](#) [02.125.8002.8](#)
[609-3404](#) [61062-3](#) [61082-181009](#) [622-3653LF](#) [63453-116](#) [636-1030](#) [636-1427](#) [636-3427](#) [636-4007](#) [641938-9](#) [641991-4](#) [644827-2](#) [65817-010LF](#) [65817-015LF](#) [65863-015LF](#) [66207-023LF](#) [67095-007LF](#) [67601157](#) [68645-018](#) [68648-049](#) [70.362.1628.0](#) [70-4210](#) [70-4226B](#) [70-4853B](#) [707-5020](#) [707-5028](#) [71.350.2428.0](#) [71918-208LF](#) [71961-016LF](#) [733-134](#) [733-162](#) [754199-000](#) [760-3052](#) [787-8014-00](#) [79531-3000](#)
[FCN-360C032-B](#) [FCN-367T-T012/H](#) [FCN-723D010/2](#) [80.063.4001.1](#) [800-90-001-10-001000](#) [800-90-010-10-002000](#) [801-43-002-10-013000](#)