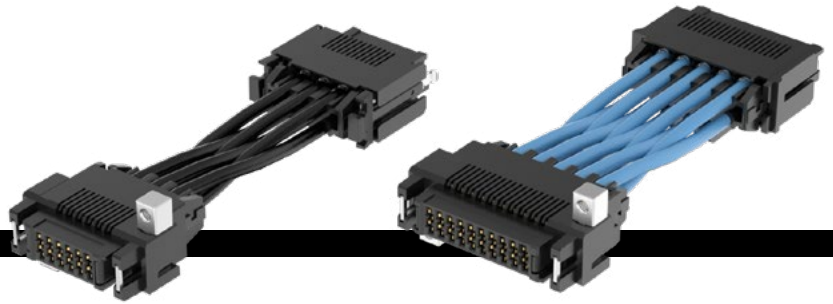


ULTRA MICRO CABLE-TO-CABLE



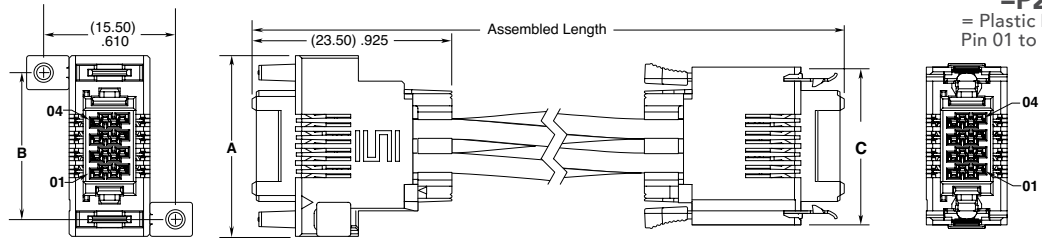
SERIES	NO. OF POSITIONS	PLATING OPTION	WIRE GAUGE	LENGTH	PINOUT
UMPI = Ultra Micro PVC Cable UMPI(T) = Ultra Micro Blue *Teflon™ Fluoropolymer Cable	-02, -03, -04, -05, -06, -07, -08, -09, -10	-L = 10 μ" (0.25 μm) Gold on contact, Tin on tail -S = 30 μ" (0.76 μm) Gold on contact, Tin on tail -T = Tin	-16 = 16 AWG -16C = 16 AWG Color Coded Cable (not available with UMPI(T)) -18 = 18 AWG -18C = 18 AWG Color Coded Cable (not available with UMPI(T))	-"XX.X" = Assembled Length in Inches Single ended = (76.2 mm) 03.0" min. Double ended = (101.6 mm) 04.0" min. (2-4 positions) Double ended = (127.0 mm) 05.0" min. (5-10 positions)	(Leave blank for Single ended) -M1 = Metal Latch Pin 01 to Pin 01 -M2 = Metal Latch Pin 01 to Pin N -P1 = Plastic Latch Pin 01 to Pin 01 -P2 = Plastic Latch Pin 01 to Pin N

UMPI(T) PRELIMINARY

UMPI(T)
Cable Mates:
UMPE(T)
End 2 Mates:
UMPE(T), UMPT

SPECIFICATIONS

Insulator Material:
Black LCP
Contact Material:
Copper Alloy
Plating:
Sn or Au over 50 μ" (1.27 μm) Ni
Wire:
16 or 18 AWG
Voltage Rating:
00 Volt = 16 & 18 AWG PVC
300 Volt = 16 AWG Teflon™ Fluoropolymer
600 Volt = 18 AWG Teflon™ Fluoropolymer



CABLE COLOR CODING	
PIN	COLOR
1	BROWN
2	RED
3	ORANGE
4	YELLOW
5	GREEN
6	BLUE
7	VIOLET
8	GRAY
9	WHITE
10	BLACK

NO. OF POSITIONS	A	B	C
-02	(17.25) .679	(13.25) .522	(14.55) .573
-03	(19.25) .758	(15.25) .600	(16.55) .652
-04	(21.25) .837	(17.25) .679	(18.55) .730
-05	(23.25) .915	(19.25) .758	(20.55) .809
-06	(25.25) .994	(21.25) .837	(22.55) .888
-07	(27.25) 1.073	(23.25) .915	(24.55) .967
-08	(29.25) 1.152	(25.25) .994	(26.55) 1.045
-09	(31.25) 1.230	(27.25) 1.073	(28.55) 1.124
-10	(33.25) 1.309	(29.25) 1.152	(30.55) 1.203

*Teflon™ is a trademark of The Chemours Company FC, LLC used under license by Samtec.

Notes:
Teflon™ Fluoropolymer cable is intended for crimp only. Contact Samtec for solderable cable applications.

For wiring option information refer to drawings on web.

Some lengths, styles and options are non-standard, non-returnable

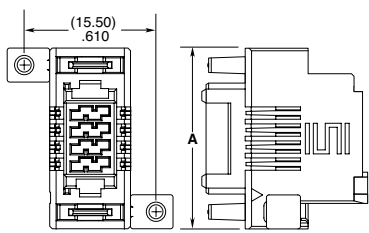
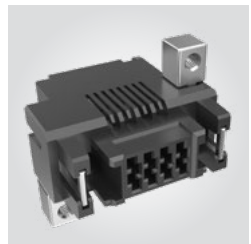
UMPI CABLE HOLDER (Required for use with IMPC)

SERIES	NUMBER OF POSITIONS	LEAD STYLE
IMPC	-02, -03, -04, -05, -06, -07, -08, -09, -10	01 = 16 AWG 02 = 18 AWG

View complete specifications at: samtec.com?UMPI & samtec.com?UMPT

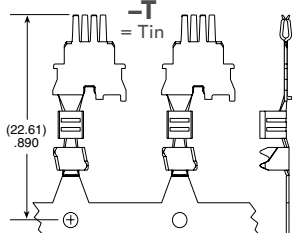
IMPC	NO. OF POSITIONS	LATCH OPTION	CC489	01	PLATING	PACKAGING
------	------------------	--------------	-------	----	---------	-----------

-02, -03, -04, -05, -06, -07, -08, -09, -10
-P1 = Panel Mount



-L = 10 μ" (0.25 μm) Gold on contact, Tin on tail
-R = Full Reel (5,000 Contacts)

-S = 30 μ" (0.76 μm) Gold on contact, Tin on tail
-M = Mini Reel (1,000 Contacts)



-T = Tin
-B = Bubble Bag (35 Contacts)

TOOLING

Hand Tool: CAT-HT-489-1618-13

Mini Applicator: CAT-MC-489-1618-XX-01

View complete specifications at: samtec.com?IMPC & samtec.com?CC489

X-ON Electronics

Largest Supplier of Electrical and Electronic Components

Click to view similar products for [Heavy Duty Power Connectors](#) category:

Click to view products by [Samtec](#) manufacturer:

Other Similar products are found below :

[6646058-2](#) [6646137-1](#) [6646138-1](#) [6646940-1](#) [6651091-1](#) [6651525-1](#) [6651529-1](#) [696475-1](#) [702-32-01109](#) [73080255059](#) [73080965046](#)
[7310205040001](#) [765-16-0080B](#) [765-18-0080D](#) [902-77-02113](#) [PS00/A0620/6300](#) [AN0024023](#) [154-42B7WM250](#) [MS3117-14AC](#) [1643543-1](#)
[1766966-1](#) [1791340000](#) [NLDFT-3-BL-L-S120-M40A](#) [NLDFT-N-W-L-C240-M40B](#) [1926015-1](#) [NLS-3-BL-C240-M40B](#) [NLS-N-W-C240-](#)
[M40B](#) [NPS-3-BL-T6](#) [2-1589900-8](#) [9300480317](#) [294-0091-01100](#) [296-0040-01100](#) [1-6609148-0](#) [A32595-0049](#) [1766249-1](#) [19000005132](#)
[1926016-1](#) [1-966831-8](#) [AN0024202](#) [AN0264023](#) [279-0841-10100A](#) [281-0334-00100A](#) [RMSB4](#) [419-2083-301](#) [LCDX4/0-14B-X](#) [075-8519-](#)
[001](#) [078238-1613](#) [07.470.3256.0](#) [09000005288](#) [09140240311](#)