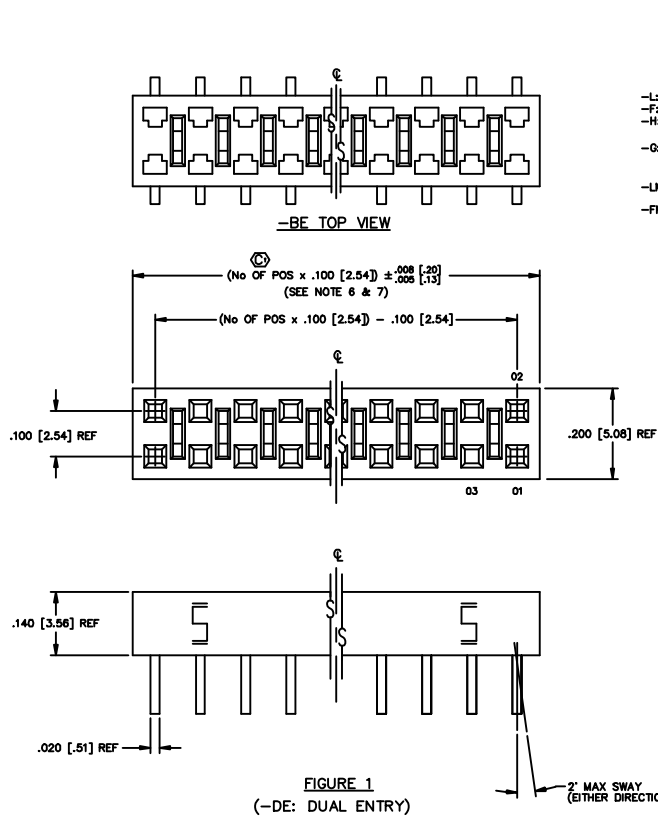
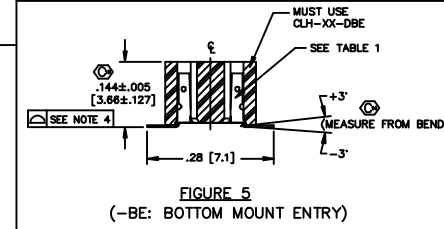
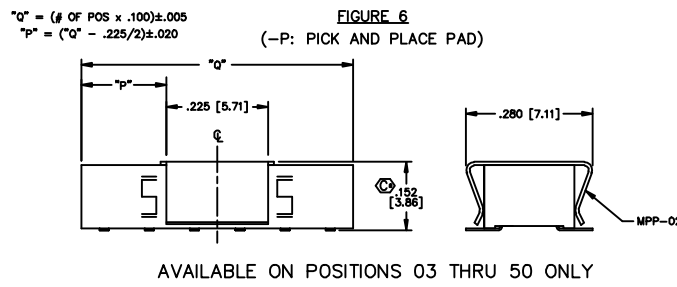
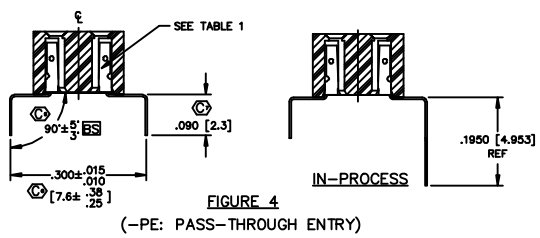
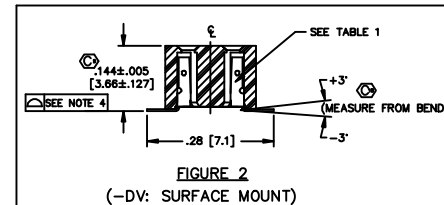
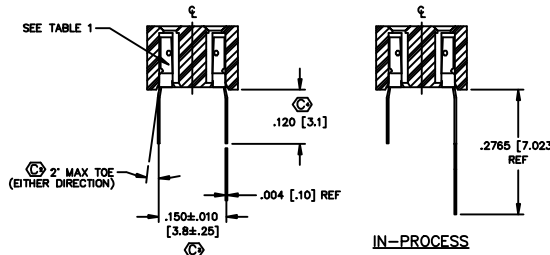


DIMENSIONS ARE IN INCHES UNLESS OTHERWISE NOTED		TOLERANCES AND ANGLES	TITLE	DWG NO.
ONE PLACE DECIMALS: ±.1 [2.5]	THREE PLACE DECIMALS: ±.005 [.127]	±2°	LOW PROFILE SOCKET STRIP	CLH-1XX-XX-X-XX-X-XX
TWO PLACE DECIMALS: ±.01 [25]	FOUR PLACE DECIMALS: ±.0020 [.0508]			SHEET 1 OF 2



ENTRY SPEC	CONTACT	INSULATOR
-DE (SEE FIG. 1)	C-73-03-X-X	CLH-XX-D
-DV (SEE FIG. 2)	C-73-01-X-X	CLH-XX-D
-TE (SEE FIG. 3)	C-73-02-X-X	CLH-XX-D
-PE (SEE FIG. 4)	C-73-04-X-X	CLH-XX-D
-BE (SEE FIG. 5)	C-73-01-X-X	CLH-XX-DBE



- NOTES:
- PUSHOUT FORCE TO BE: 1 lb. MIN.
 - [] DIMENSIONS ARE IN MILLIMETERS.
 - PARTS TO BE SYMMETRICAL ABOUT C.
 - FOR POSITIONS -02 THRU -40, COPLANARITY TO BE .004; FOR POSITIONS -41 THRU -51, COPLANARITY TO BE .006.
 - TUBE POSITIONS 03 THRU 51; LAYER PACKAGE POSITION 02. (-PE CAN BE TUBED 02 THRU 51)
 - WILL LOSE A POSITION FOR EVERY CUT MADE ON A SOCKET STRIP; CUT FLASH TO BE .010 [.25] MAX WITH NO FLASH ALLOWED IN HOLES OR EXTENDING BELOW LEADS.
 - ENDWALL AFTER CUTTING: .0255±.003
 - MAX BURR: .003
 - ⊕ REPRESENTS A CRITICAL DIMENSION.

IMPORTANT NOTE
THE MANUFACTURER ASSUMES NO LIABILITY FOR DAMAGE TO PROPERTY OR PERSONS ARISING FROM THE USE OF THIS PRODUCT. THE USER SHALL BE RESPONSIBLE FOR THE PROPER USE OF THIS PRODUCT. THE USER SHALL BE RESPONSIBLE FOR THE PROPER USE OF THIS PRODUCT.

MATERIAL:
BODY: VECTRA E130
CONTACT: 521 PHOSPHOR BRONZE
FULL HARD

520 PARK EAST BLVD. NEW ALBANY, INDIANA 47150
PHONE (812) 844-8733 P.O. BOX 1147
CODE 58322

MUST USE CLH-XX-DBE

8320 PROJ/ASSEMBLY/100 CLH-ASMT

MATERIAL: PURVIS 10-4-94

X-ON Electronics

Largest Supplier of Electrical and Electronic Components

Click to view similar products for [Headers & Wire Housings](#) category:

Click to view products by [Samtec](#) manufacturer:

Other Similar products are found below :

[892-18-020-10-001101](#) [58102-G61-06LF](#) [582553-1](#) [0009485154](#) [009176003701906](#) [0050291907](#) [LY20-4P-DT1-P1E-BR](#) [02.125.8002.8](#)
[609-3404](#) [61062-3](#) [61082-181009](#) [622-3653LF](#) [63453-116](#) [636-1030](#) [636-1427](#) [636-3427](#) [636-4007](#) [641938-9](#) [641991-4](#) [644827-2](#) [65817-010LF](#) [65817-015LF](#) [65863-015LF](#) [66207-023LF](#) [67095-007LF](#) [67601157](#) [68645-018](#) [68648-049](#) [70.362.1628.0](#) [70-4210](#) [70-4226B](#) [70-4853B](#) [707-5020](#) [707-5028](#) [71.350.2428.0](#) [71918-208LF](#) [71961-016LF](#) [733-134](#) [733-162](#) [754199-000](#) [760-3052](#) [787-8014-00](#) [79531-3000](#)
[FCN-360C032-B](#) [FCN-367T-T012/H](#) [FCN-723D010/2](#) [80.063.4001.1](#) [800-90-001-10-001000](#) [800-90-010-10-002000](#) [801-43-002-10-013000](#)