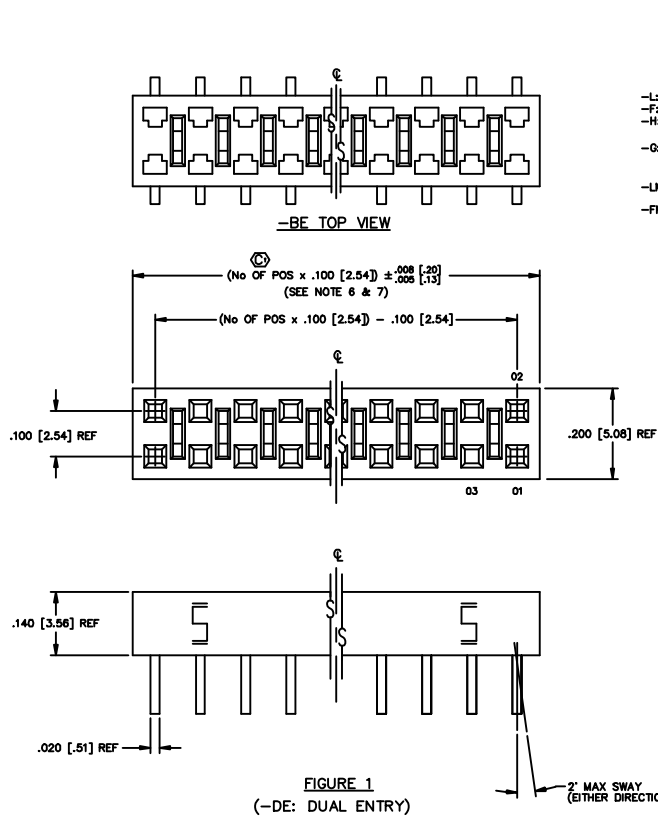
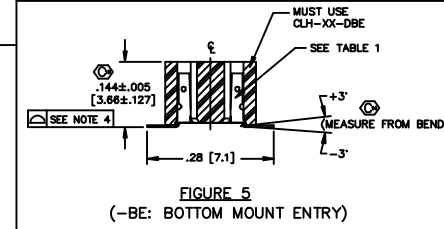
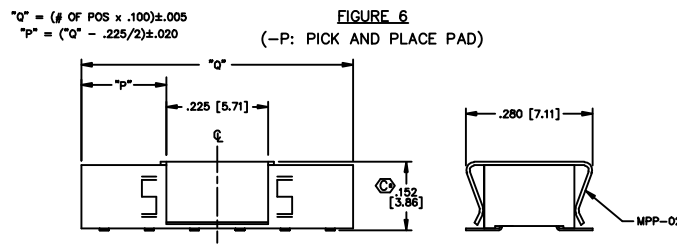
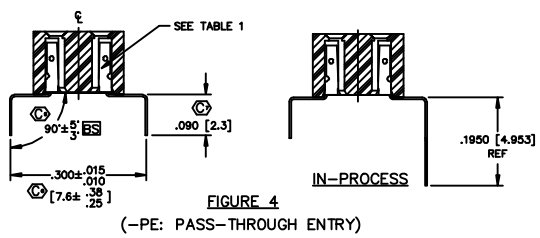
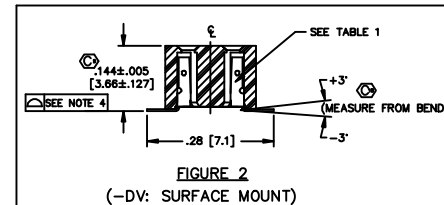
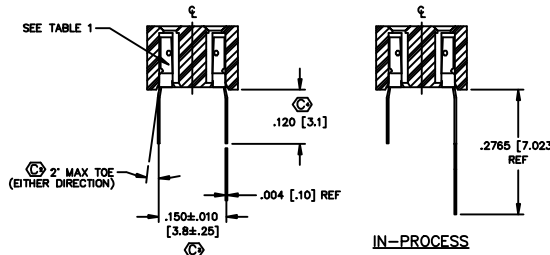


DIMENSIONS ARE IN INCHES		UNLESS OTHERWISE NOTED		TOLERANCES AND ANGLES		TITLE	DWG NO.
ONE PLACE DECIMALS: ±.1 [2.5]	THREE PLACE DECIMALS: ±.005 [0.127]			±2°		LOW PROFILE SOCKET STRIP	CLH-1XX-XX-X-XX-X-XX
TWO PLACE DECIMALS: ±.01 [0.25]	FOUR PLACE DECIMALS: ±.0020 [0.0508]						SHEET 1 OF 2



ENTRY SPEC	CONTACT	INSULATOR
-DE (SEE FIG. 1)	C-73-03-X-X	CLH-XX-D
-DV (SEE FIG. 2)	C-73-01-X-X	CLH-XX-D
-TE (SEE FIG. 3)	C-73-02-X-X	CLH-XX-D
-PE (SEE FIG. 4)	C-73-04-X-X	CLH-XX-D
-BE (SEE FIG. 5)	C-73-01-X-X	CLH-XX-DBE



IMPORTANT NOTE
 THE MANUFACTURER ASSUMES NO LIABILITY FOR DAMAGE TO PROPERTY OR PERSONS ARISING FROM THE USE OF THIS PRODUCT. THE USER SHALL BE RESPONSIBLE FOR THE PROPER SELECTION AND USE OF THIS PRODUCT. THE USER SHALL BE RESPONSIBLE FOR THE PROPER SELECTION AND USE OF THIS PRODUCT.

MATERIAL:
 BODY: VECTRA E130
 VECTRA E130
 CONTACT: 521 PHOSPHOR BRONZE
 FULL HARD

520 PARK EAST BLVD. NEW ALBANY, INDIANA 47150
 PHONE (812) 844-8733 P.O. BOX 1147
 CODE 58322

MUST USE CLH-XX-DBE

830PROJ/ASSEMBLY/100 CLH-ASMT

MATERIAL: PURVIS 10-4-94 CLH-1XX-XX-X-XX-X-XX

AVAILABLE ON POSITIONS 03 THRU 50 ONLY

X-ON Electronics

Largest Supplier of Electrical and Electronic Components

Click to view similar products for [Headers & Wire Housings](#) category:

Click to view products by [Samtec](#) manufacturer:

Other Similar products are found below :

[95000-104TRLF](#) [10135584-644402LF](#) [DF62W-EP2022PCA](#) [95000-106TRLF](#) [DF62W-2022SCA](#) [DF62W-EP2022PC](#) [2203348](#) [DF62W-2022SC](#) [1084018](#) [1029039](#) [1084017](#) [802-10-012-10-002000](#) [1112640](#) [1112639](#) [000-34000](#) [0009482033](#) [0009507031](#) [57102-S06-03LF](#) [57202-S52-04LF](#) [PCN6-15S-2.5E](#) [0039019024](#) [58102-G61-06LF](#) [582553-1](#) [0009485154](#) [0009508121](#) [0022285053](#) [0050291907](#) [018731A](#) [LY20-4P-DT1-P1E-BR](#) [02.125.8002.8](#) [60101931](#) [60598-1 \(Cut Strip\)](#) [M1625-3R/100](#) [61062-3](#) [61082-181009](#) [636-1427](#) [638009-1](#) [641938-9](#) [641991-4](#) [644168-1](#) [647662-1](#) [65039-019ELF](#) [65817-002LF](#) [65817-015LF](#) [65863-015LF](#) [66207-023LF](#) [67016-026LF](#) [67046-001LF](#) [67095-007LF](#) [67230-005LF](#)