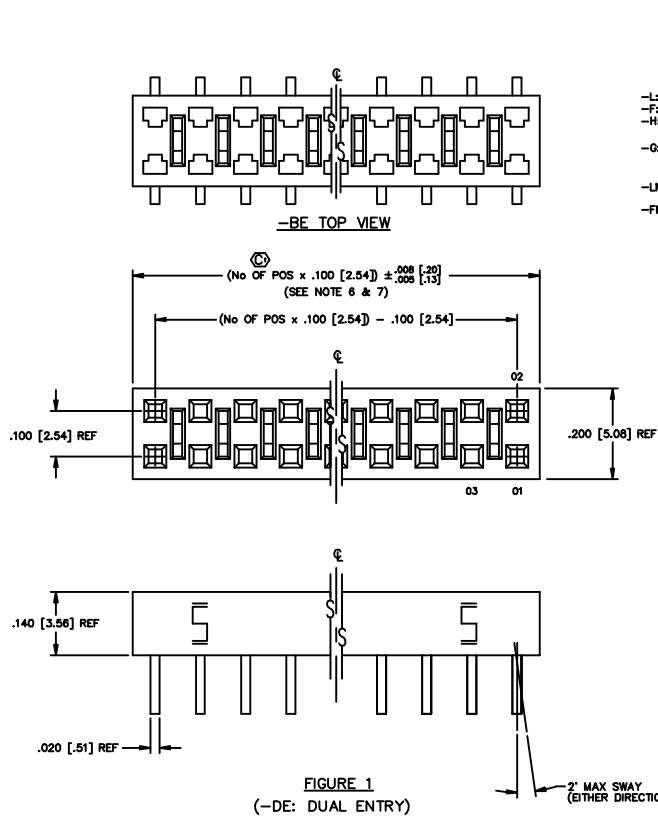


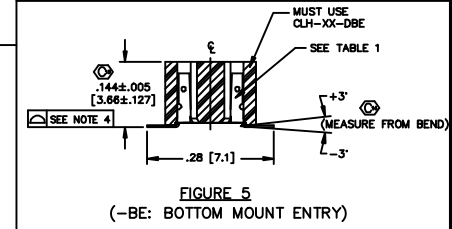
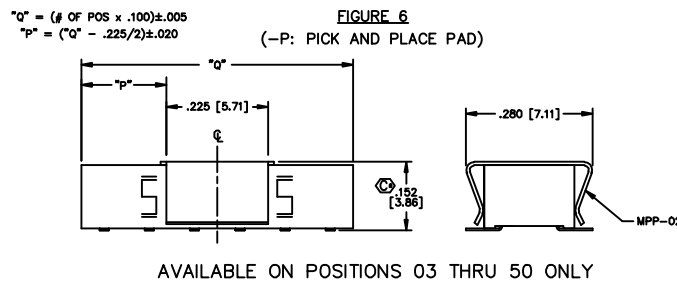
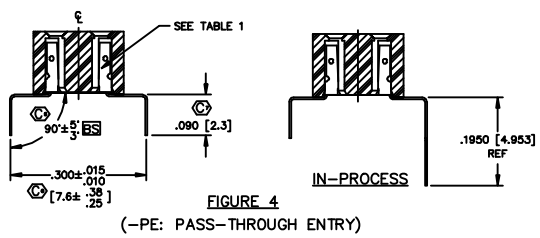
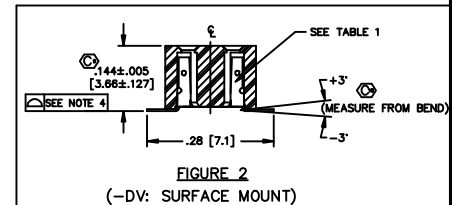
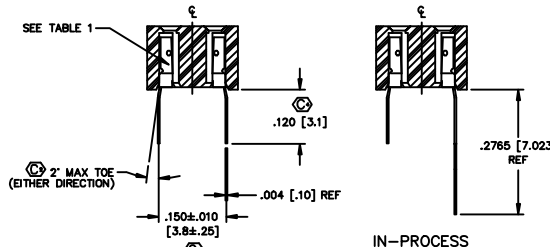
REVISION BS

DIMENSIONS ARE IN INCHES UNLESS OTHERWISE NOTED		TOLERANCES AND ANGLES	TITLE	DWG NO.
ONE PLACE DECIMALS: ±.1 [2.5]	THREE PLACE DECIMALS: ±.005 [0.127]	±2°	LOW PROFILE SOCKET STRIP	CLH-1XX-XX-X-XX-X-XX
TWO PLACE DECIMALS: ±.01 [0.25]	FOUR PLACE DECIMALS: ±.0020 [0.0508]			SHEET 1 OF 2



ENTRY SPEC	CONTACT	INSULATOR
-DE (SEE FIG. 1)	C-73-03-X-X	CLH-XX-D
-DV (SEE FIG. 2)	C-73-01-X-X	CLH-XX-D
-TE (SEE FIG. 3)	C-73-02-X-X	CLH-XX-D
-PE (SEE FIG. 4)	C-73-04-X-X	CLH-XX-D
-BE (SEE FIG. 5)	C-73-01-X-X	CLH-XX-DBE

- NOTES:
- PUSHOUT FORCE TO BE: 1 lb. MIN.
 - [] DIMENSIONS ARE IN MILLIMETERS.
 - PARTS TO BE SYMMETRICAL ABOUT ϵ .
 - FOR POSITIONS -02 THRU -40, COPLANARITY TO BE .004; FOR POSITIONS -41 THRU -51, COPLANARITY TO BE .006.
 - TUBE POSITIONS 03 THRU 51; LAYER PACKAGE POSITION 02. (-PE CAN BE TUBED 02 THRU 51)
 - WILL LOSE A POSITION FOR EVERY CUT MADE ON A SOCKET STRIP; CUT FLASH TO BE .010 [.25] MAX WITH NO FLASH ALLOWED IN HOLES OR EXTENDING BELOW LEADS.
 - ENDWALL AFTER CUTTING: .0255±.003
 - MAX BURR: .003
 - ϵ REPRESENTS A CRITICAL DIMENSION.



IMPORTANT NOTE
THIS DRAWING IS THE PROPERTY OF SAMTEC CORPORATION. IT IS TO BE USED ONLY FOR THE PURCHASE AND FABRICATION OF SAMTEC PRODUCTS. IT IS NOT TO BE REPRODUCED, COPIED, OR TRANSMITTED IN ANY FORM OR BY ANY MEANS, ELECTRONIC OR MECHANICAL, INCLUDING PHOTOCOPYING, RECORDING, OR BY ANY INFORMATION STORAGE AND RETRIEVAL SYSTEM, WITHOUT THE WRITTEN PERMISSION OF SAMTEC CORPORATION.

MATERIAL:
BODY: VECTRA E130
VECTRA E130
CONTACT: 50% PHOSPHOR BRONZE
FULL HARD

8320 PROD/ASSEMBLY/100
CLH-ASM1

samtec

8320 PARK EAST BLVD. NEW ALBANY, INDIANA 47150
PHONE (812) 944-8733 P.O. BOX 1147
CODE 58322

MATERIAL: PURVIS 10-4-94 CLH-1XX-XX-X-XX-X-XX
SHEET 1 OF 2

X-ON Electronics

Largest Supplier of Electrical and Electronic Components

Click to view similar products for [Samtec manufacturer](#):

Other Similar products are found below :

[ESQT-135-03-F-D-380](#) [QTE-060-01-L-D-A](#) [MSAS-179-ZUGG-18](#) [MTSW-103-07-F-S-240](#) [BCS-116-L-S-TE](#) [ERF8-020-05.0-S-DV-K-TR](#)
[ERF8-060-05.0-L-DV-K-TR](#) [IDMD-10-T-12.00-A-G-R](#) [SFML-115-01-S-D](#) [SFML-125-01-S-D](#) [LSHM-120-02.5-L-DV-A-N-K-TR](#) [ESQ-110-14-G-D](#) [ESQT-125-03-F-D-310](#) [SO-0515-01-01-02](#) [FJH-50-D-12.00-4](#) [CES-150-01-T-D](#) [QTE-040-04-L-D-A](#) [QTH-020-04-F-D-DP-A-K-TR](#)
[QTH-060-01-F-D-A](#) [QTH-090-04-L-D-A](#) [TCSD-10-S-05.00-01-F-N](#) [TCSD-15-D-02.00-01-N](#) [TFM-115-02-L-DH](#) [TFM-120-12-S-D-LC](#)
[TFML-140-02-S-D](#) [TLW-107-05-G-D](#) [BDL-136-T-E](#) [TSS-132-01-G-S](#) [TST-113-04-S-D-RA](#) [TSW-105-14-F-D](#) [MMS-110-01-H-DH](#) [HPF-03-02-T-S](#) [DW-25-11-L-D-450](#) [ERF8-020-01-L-D-RA-L-TR](#) [ERF8-040-05.0-L-DV-TR](#) [SL-120-T-10](#) [SLM-115-01-S-D](#) [CLP-132-02-G-D](#)
[TFC-125-02-F-D-A-K](#) [TSW-202-07-T-S](#) [ISDF-25-D-M](#) [IPT1-105-01-S-D-RA](#) [IPL1-125-01-S-D-RA](#) [ICO-422-L-GT](#) [HTSW-116-15-L-S-LL](#)
[HTSW-103-08-L-S-RA](#) [ESQ-116-33-T-T](#) [ERM8-020-02.0-S-DV-TR](#) [TCSD-10-D-06.00-01-N](#) [TCSD-20-D-12.00-01-N](#)