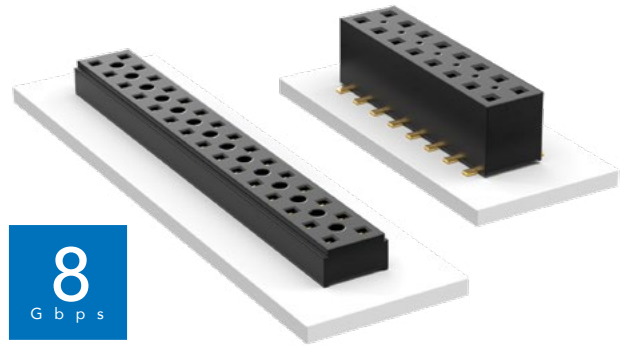


COST-EFFECTIVE & DUAL WIPE SOCKETS

(2.00 mm) .0787" PITCH • TLE/CLT SERIES



TLE
Mates:
 TMMH, TMM, MTMM,
 MMT, TW, LTMM, ZLTMM,
 TCMD, TSH

CLT
Mates:
 TMM, TMMH, MTMM,
 MMT, TW, TSH

SPECIFICATIONS

TLE
Insulator Material:
 Black Liquid Crystal Polymer
Contact Material:
 Phosphor Bronze
Plating:
 Au over 50 μ" (1.27 μm) Ni
Current Rating (TLE/TMMH):
 3.2 A per pin
 (2 pins powered)
Operating Temp Range:
 -55 °C to +125 °C
Insertion Depth:
 (2.08 mm) .082" to
 (4.37 mm) .172" with
 (0.38 mm) .015" wipe,
 pass-through, or
 (3.35 mm) .132" min
 for bottom entry

CLT
 Same as TLE except:
Plating:
 Sn or Au over 50 μ" (1.27 μm) Ni
Current Rating (TMMH/CLT):
 4.1 A per pin
 (2 pins powered)
Insertion Depth:
 Top Entry=
 (1.40 mm) .055" minimum
 Bottom Entry=
 (2.57 mm) .101" minimum
 (add board thickness for
 correct post OAL)
Max Cycles:
 100 with 10 μ" (0.25 μm) Au

PROCESSING

TLE
Lead-Free Solderable:
 Yes
SMT Lead Coplanarity:
 (0.10 mm) .004" max (02-26)
 (0.15 mm) .006" max (27-50)*
 *(.004" stencil solution
 may be available; contact
 ipg@samtec.com)

CLT
 Same as TLE except:
SMT Lead Coplanarity:
 (0.10 mm) .004" max (02-25)
 (0.15 mm) .006" max (26-34)*
 (0.20 mm) .008" max (35-50)*
 *(.004" stencil solution
 may be available; contact
 ipg@samtec.com)

Note:
 Some lengths, styles and
 options are non-standard,
 non-returnable.

TLE	-	1	NO. PINS PER ROW	-	01	PLATING OPTION	-	DV	-	OPTION
-----	---	---	------------------	---	----	----------------	---	----	---	--------



02 thru 50

-G
 = 10 μ" (0.25 μm)
 Gold

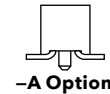
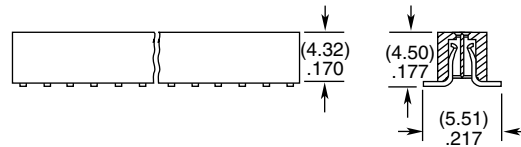
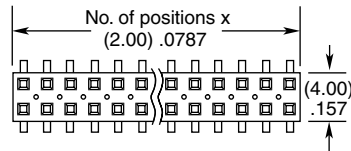
-A
 = Alignment Pin
 (3 positions minimum)

-K
 = (5.00 mm) .197" DIA
 Polyimide Film Pick & Place Pad
 (3 positions minimum)

-P
 = Metal Pick & Place Pad
 (4 positions minimum)

-TR
 = Tape & Reel Packaging
 (2-37 positions only)

-FR
 = Full Reel Tape & Reel
 (must order maximum
 quantity per reel; contact
 Samtec for quantity breaks)
 (2-37 positions only)



CLT	-	1	NO. PINS PER ROW	-	02 thru 50	LEAD STYLE	-	PLATING OPTION	-	D	OTHER OPTIONS
-----	---	---	------------------	---	------------	------------	---	----------------	---	---	---------------



02 thru 50

-01
 = Through-hole

-F
 = Gold flash
 on contact,
 Matte Tin on tail

All options require
 Style -02

-BE
 = Bottom Entry
 (Required for bottom
 entry applications)

-A
 = Alignment Pin
 (3 positions minimum)
 Metal or plastic at
 Samtec's discretion

-K
 = (5.00 mm) .197" DIA
 Polyimide Film
 Pick & Place Pad
 (04 thru 50 only)

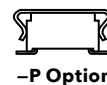
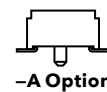
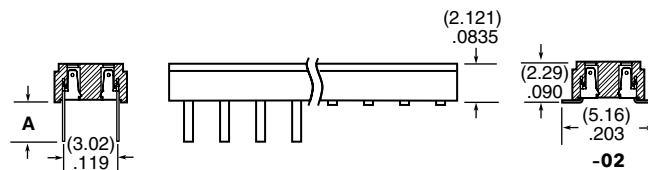
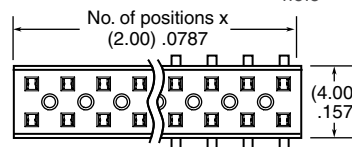
-P
 = Pick & Place Pad
 (4 positions minimum)
 (Not always necessary
 for auto placement.)

-TR
 = Tape & Reel
 (36 positions max)

-FR
 = Full Reel Tape & Reel
 (must order maximum
 quantity per reel;
 contact Samtec for
 quantity breaks)
 (36 positions max)

ALSO AVAILABLE

Other Platings
 (MOQ Required)



LEAD STYLE	A
-01	(2.16) .085
-03	(2.95) .116

X-ON Electronics

Largest Supplier of Electrical and Electronic Components

Click to view similar products for [Board to Board & Mezzanine Connectors](#) category:

Click to view products by [Samtec](#) manufacturer:

Other Similar products are found below :

[589158040000018](#) [MDF7C-18P-2.54DSA\(55\)](#) [FCN-230C068-11](#) [FCN-268F012-G/BD](#) [FCN-268F036-G/BD](#) [FCN-268M012-G/0D](#) [FCN-268M024-G/1D](#) [FCN-723J004/1](#) [MIS-048-01-F-D-DP-K](#) [832-10-034-10-001000](#) [FX4C-80S-1.27DSA](#) [FCN-214Q030-G/0](#) [FCN-234P048-G/0](#) [FCN-235D050-G/C](#) [210-93-314-41-105000](#) [2-22603-0](#) [MDF7-40DP-2.54DSA\(55\)](#) [AXG720047](#) [5031084030](#) [MIT-114-03-F-D-K](#) [55323-1519](#) [DF33-2P-3.3DSA\(24\)](#) [YFT-20-05-H-03-SB-K](#) [503308-3040](#) [026-6203-PDB](#) [027-6203-PDB](#) [069159702701000](#) [10123981-102LF](#) [101A10019X](#) [55650-0588-C](#) [68684-306](#) [75140-7012](#) [589159005003045](#) [194261-1](#) [FCN-268F024-G0D](#) [10124054-515LF](#) [68685-603](#) [8-1616154-3](#) [MIS-019-01-F-D](#) [589159005002045](#) [541371078](#) [IL-WX-10PB-HF-B-E1000E](#) [FCN-268M024-G/3D](#) [20021832-06016C1LF](#) [KX15-20KLDL-E1000E](#) [MDF7-16DP-2.54DSA\(55\)](#) [AXE810124](#) [FCN-214J100-G/0](#) [FCN-230C068-E/S](#) [AXE812124](#)