

DO NOT SCALE FROM THIS PRINT

TABLE 1

LEAD STYLE		TERMINAL	'L' OVERALL LENGTH (REF)
SERIES D&Z	SERIES E		
07	N/A	T-1S6-07-XXX-2	.430
08	N/A	T-1S6-08-XXX-2	.530
09	09	T-1S6-09-XXX-2	.730
10	10	T-1S6-10-XXX-2	.830
11	11	T-1S6-11-XXX-2	.930
12	12	T-1S6-12-XXX-2	1.030
13	13	T-1S6-13-XXX-2	1.230
14	14	T-1S6-14-XXX-2	1.430
15	15	T-1S6-15-XXX-2	.630
16	N/A	T-1S6-16-XXX-2	.445
17	N/A	T-1S6-17-XXX-2	.480
19	19	T-1S6-19-XXX-2	1.330
20	20	T-1S6-20-XXX-2	1.130

DIMENSIONS ARE IN INCHES		TOLERANCES ARE:		TITLE: <b>LOW COST BOARD SPACERS</b>	DWG NO: XW-XX-XX-XXX-X-XXXX-XXX-XX-XXX
ONE PLACE DECIMALS ±.1	THREE PLACE DECIMALS ± .005	ANGLES ± 2°			
TWO PLACE DECIMALS ±.01	FOUR PLACE DECIMALS ± .0020		SHEET 1 OF 2		

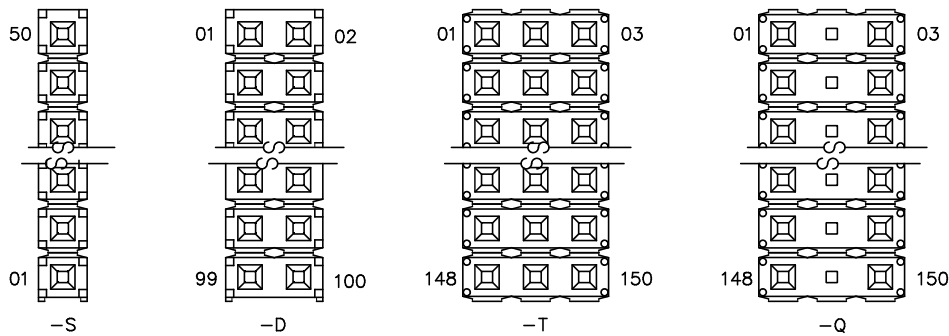
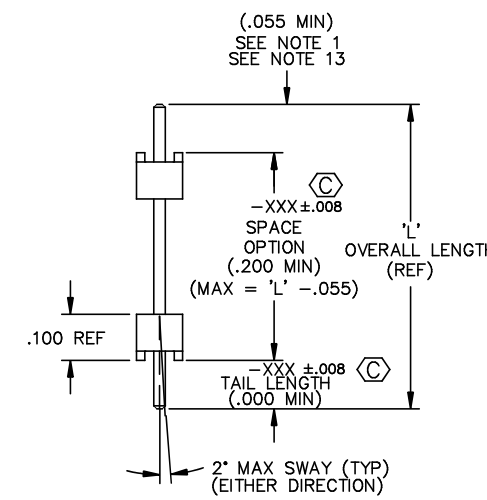
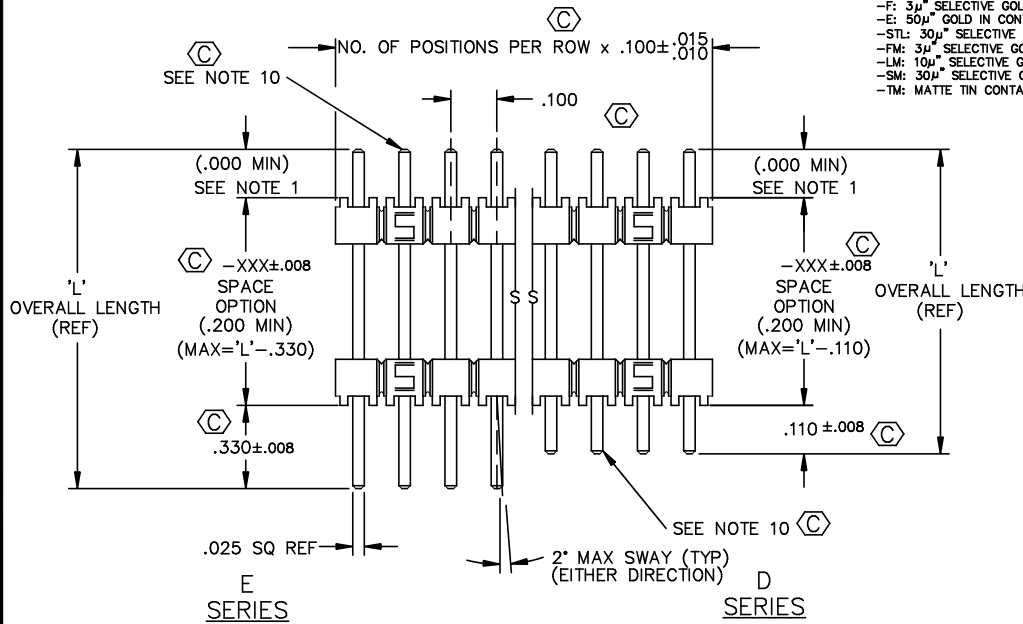
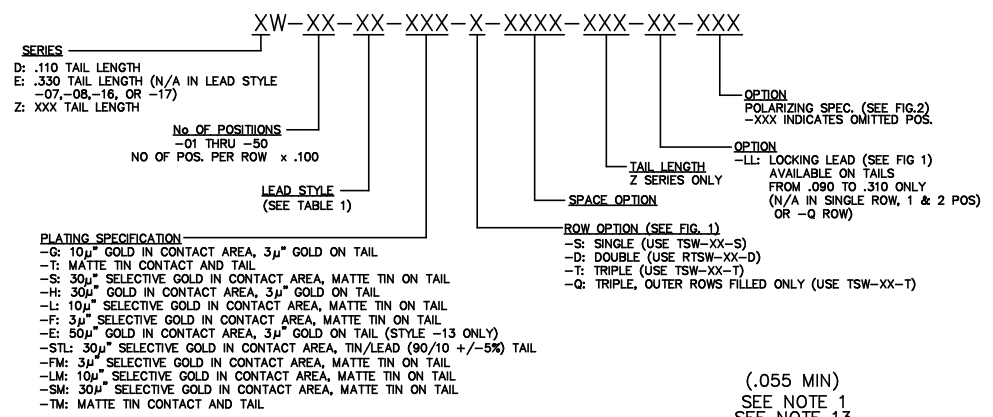


FIGURE 2

NUMBER POSITIONS WITH .330, .110, OR ZW TAIL DOWN

- NOTES:
- HEIGHT VARIATION BETWEEN ANY TWO PINS AND ROW SHALL BE .010 MAX.
  - ~~S PLATING: PLATED AREA WILL BE ON THE LONGER TAIL~~
  - ~~G PLATING: HEAVY GOLD ON LONGER TAIL~~
  - ~~L PLATING: GOLD ON LONGER TAIL~~
  - ~~H PLATING: HEAVY GOLD ON LONGER TAIL~~
  - ~~F PLATING: FLASH SELECTIVE GOLD ON LONGER TAIL~~
  - ~~P PLATING: GOLD FLASHED PALLADIUM NICKEL ON LONGER TAIL~~
  - ~~E PLATING: EXTRA HEAVY GOLD ON LONGER TAIL~~
  - (C) REPRESENTS A CRITICAL DIMENSION.
  - F, -S, -L, -P GOLD TO BE ON LONGER TAIL.
  - G, -H, -E, HEAVY GOLD TO BE ON LONGER TAIL.
  - CRIMPED TAILS OF .090 TO BE TOLERANCED +.008/-0.000.
  - TSW-50-D TO BE USED IF RTSW-50-D IS NOT AVAILABLE
  - .000 MIN IF TAIL LENGTH IS GREATER THAN OR EQUAL TO .055.
  - TERMINAL PUSHOUT FORCE: 3 LBS. MIN.
  - MAXIMUM CUT FLASH: .010[.25]
  - FOR ADDED MECHANICAL STABILITY, SAMTEC RECOMMENDS MECHANICAL BOARD SPACERS EXISPROD\ASSEMBLY100 BE USED IN APPLICATIONS WITH GOLD OR SELECTIVE GOLD PLATED CONNECTORS. CONTACT IPG@SAMTEC.COM FOR MORE INFORMATION.

**PROPRIETARY NOTE**  
THIS DOCUMENT CONTAINS INFORMATION CONFIDENTIAL AND PROPRIETARY TO SAMTEC INC. AND SHALL NOT BE REPRODUCED OR TRANSFERRED TO OTHER DOCUMENTS OR DISCLOSED TO OTHERS OR USED FOR ANY PURPOSE OTHER THAN THAT FOR WHICH IT WAS OBTAINED WITHOUT THE EXPRESSED WRITTEN CONSENT OF SAMTEC INC.

**MATERIAL:**  
BODIES:  
PBT, UL 94 VO  
GLASS FILLED POLYESTER  
COLOR: BLACK  
TERMINALS:  
PHOSPHOR BRONZE, ALLOY  
NO. 510, 3/4 HARD,  
TENSILE RANGE 95-105 KSI

**samtec**

520 PARK EAST BLVD. NEW ALBANY, INDIANA 47150  
PHONE (812) 944-6733 P.O. BOX 1147  
CODE 55322

MADE BY: WILLIAMS 8-13-84

XW-XX-XX-XXX-X-XXXX-XXX-XX-XXX  
SHEET 1 OF 2

## X-ON Electronics

Largest Supplier of Electrical and Electronic Components

*Click to view similar products for [Board to Board & Mezzanine Connectors](#) category:*

*Click to view products by [Samtec](#) manufacturer:*

Other Similar products are found below :

[589158040000018](#) [MDF7C-18P-2.54DSA\(55\)](#) [FCN-230C068-11](#) [FCN-268F012-G/BD](#) [FCN-268F036-G/BD](#) [FCN-268M012-G/0D](#) [FCN-268M024-G/1D](#) [FCN-723J004/1](#) [MIS-048-01-F-D-DP-K](#) [832-10-034-10-001000](#) [FX4C-80S-1.27DSA](#) [FCN-214Q030-G/0](#) [FCN-234P048-G/0](#) [FCN-235D050-G/C](#) [210-93-314-41-105000](#) [2-22603-0](#) [MDF7-40DP-2.54DSA\(55\)](#) [AXG720047](#) [5031084030](#) [MIT-114-03-F-D-K](#) [55323-1519](#) [DF33-2P-3.3DSA\(24\)](#) [YFT-20-05-H-03-SB-K](#) [503308-3040](#) [026-6203-PDB](#) [027-6203-PDB](#) [069159702701000](#) [10123981-102LF](#) [101A10019X](#) [55650-0588-C](#) [68684-306](#) [75140-7012](#) [589159005003045](#) [194261-1](#) [FCN-268F024-G0D](#) [10124054-515LF](#) [68685-603](#) [8-1616154-3](#) [MIS-019-01-F-D](#) [589159005002045](#) [541371078](#) [IL-WX-10PB-HF-B-E1000E](#) [FCN-268M024-G/3D](#) [20021832-06016C1LF](#) [KX15-20KLDL-E1000E](#) [MDF7-16DP-2.54DSA\(55\)](#) [AXE810124](#) [FCN-214J100-G/0](#) [FCN-230C068-E/S](#) [AXE812124](#)