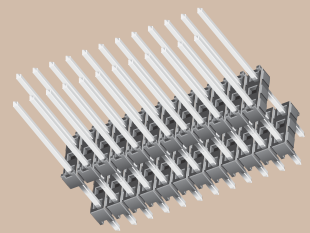
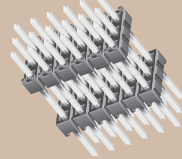


ZW-06-10-G-T-450-230



DW-12-12-L-Q-400



BOARD STACKER DW, EW, ZW & HW SERIES

Mates with:
SSW, SSQ, ESW, ESQ, CES, SLW, BSW, BCS, SSM, IDSS, IDSD, HLE

SPECIFICATIONS

For complete specifications see www.samtec.com?DW, www.samtec.com?EW or www.samtec.com?ZW

DW, EW, ZW

Insulator Material:
Black Glass
Filled Polyester
Terminal Material:
Phosphor Bronze
Plating:
Au or Sn over 50µ" (1,27µm) Ni

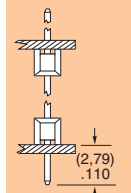
Operating Temp Range:
-55°C to +125°C with Gold
-55°C to +105°C with Tin
RoHS Compliant:
Yes

Processing:
Lead-Free Solderable:
Wave Only

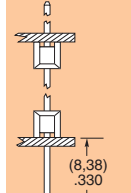


- TYPE STRIP**
- NO. PINS PER ROW**
- LEAD STYLE**
- PLATING OPTION**
- ROW OPTION**
- STACKER HEIGHT**
- OTHER OPTIONS**

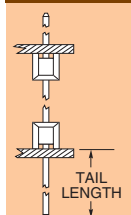
DW
= (2,79mm)
.110" Tail



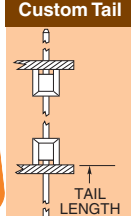
EW
= (8,38mm)
.330" Tail



ZW
= Custom Tail



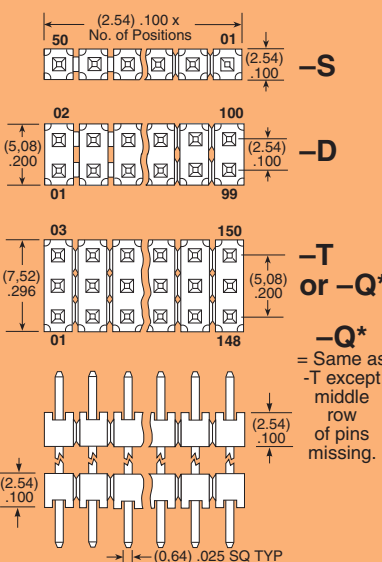
HW
= High Temp Custom Tail



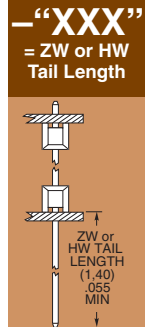
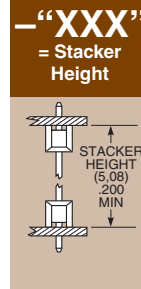
Specify LEAD STYLE from chart

LEAD STYLE	OAL
-07	(10,92).430
-08	(13,46).530
-09	(18,54).730
-10	(21,08).830
-11	(23,62).930
-12	(26,16) 1.030
-13	(31,24) 1.230
-14	(36,32) 1.430
-15	(16,00).630
-16	(11,30).445
-17	(12,19).480
-19	(33,78) 1.330
-20	(28,70) 1.130

01 thru 50



- S**
= Single Row
- D**
= Double Row
- T**
= Triple Row
- Q**
= Double Row .200" (5,08mm) row space

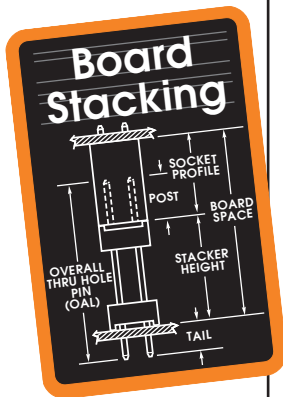


-LL
= Locking Lead
(Shortest dimension between the tail and the post that will be crimped. Available on tails from (2,29) .090" to (7,87) .310" only.)
Single row, 01 & 02 positions & -Q row not available

"XXX"
= Polarized
Specify omitted pin position

- F**
= Gold flash on contact, Matte Tin on tail
- L**
= 10µ" (0,25µm) Gold on contact area of longer tail, Matte Tin on tail
- G**
= 10µ" (0,25µm) Gold on contact area of longer tail, Gold flash on balance
- T**
Matte Tin

Note: Other Gold plating options available. Contact Samtec.



Due to technical progress, all designs, specifications and components are subject to change without notice.

X-ON Electronics

Largest Supplier of Electrical and Electronic Components

Click to view similar products for [Headers & Wire Housings](#) category:

Click to view products by [Samtec](#) manufacturer:

Other Similar products are found below :

[95000-104TRLF](#) [10135584-644402LF](#) [DF62W-EP2022PCA](#) [95000-106TRLF](#) [DF62W-2022SCA](#) [DF62W-EP2022PC](#) [2203348](#) [DF62W-2022SC](#) [1084018](#) [1029039](#) [1084017](#) [802-10-012-10-002000](#) [1112640](#) [1112639](#) [000-34000](#) [0009482033](#) [0009507031](#) [57102-S06-03LF](#) [57202-S52-04LF](#) [PCN6-15S-2.5E](#) [0039019024](#) [58102-G61-06LF](#) [582553-1](#) [0009485154](#) [0009508121](#) [0022285053](#) [0050291907](#) [018731A](#) [LY20-4P-DT1-P1E-BR](#) [02.125.8002.8](#) [60101931](#) [60598-1 \(Cut Strip\)](#) [M1625-3R/100](#) [61062-3](#) [61082-181009](#) [636-1427](#) [638009-1](#) [641938-9](#) [641991-4](#) [644168-1](#) [647662-1](#) [65039-019ELF](#) [65817-002LF](#) [65817-015LF](#) [65863-015LF](#) [66207-023LF](#) [67016-026LF](#) [67046-001LF](#) [67095-007LF](#) [67230-005LF](#)