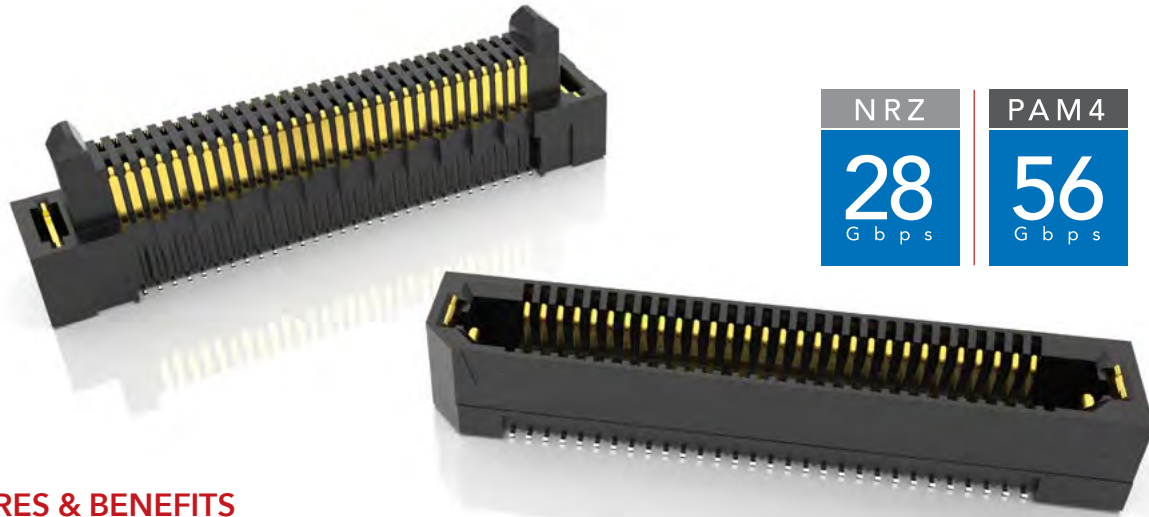


RUGGED HIGH-SPEED STRIPS

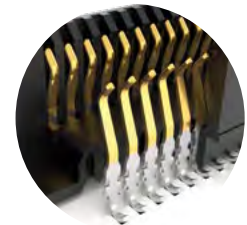


| | |
|------------|------------|
| NRZ | PAM4 |
| 28 Gbps | 56 Gbps |

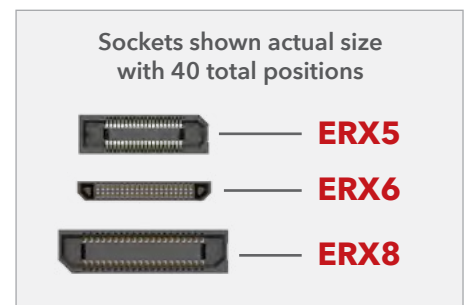
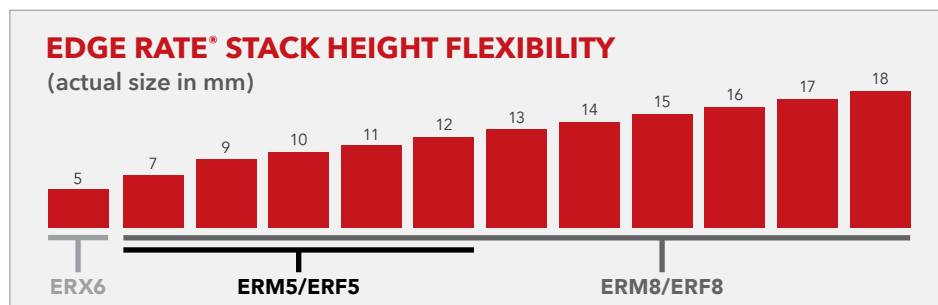
FEATURES & BENEFITS

Edge Rate® rugged high-speed connector strips are designed for high speed, high cycle applications, and enabled by Samtec's signal integrity-optimized Edge Rate® contact system.

- Choice of 0.50 mm, 0.635 mm or 0.80 mm pitch
- 0.50 mm pitch system offers up to 40% PCB space savings vs. 0.80 mm pitch
- 0.635 mm pitch system with extremely slim 2.5 mm body width
- Rugged latching, locking and 360° shielding
- Up to 1.5 mm contact wipe; robust when "zippered" during unmating
- Compatible with UMPT/UMPS for power/signal flexibility



Signal integrity-optimized Edge Rate® contact system reduces broadside coupling



KEY SPECIFICATIONS

| SERIES | PITCH | STACK HEIGHTS | TOTAL PINS / PAIRS | INSULATOR MATERIAL | TERMINAL MATERIAL | PLATING | OPERATING TEMP RANGE | LEAD-FREE SOLDERABLE |
|-------------|----------|---------------|--------------------|--------------------|---|----------------------------------|----------------------|----------------------|
| ERM5 / ERF5 | 0.50 mm | 7-12 mm | 20-150 | Black LCP | Phosphor Bronze or BeCu (ERM5), BeCu (ERF5) | Au or Sn over 50 μ" (1.27 μm) Ni | -55 °C to +125 °C | Yes |
| ERM6 / ERF6 | 0.635 mm | 5 mm | 20-120 | | Copper Alloy | | | |
| ERM8 / ERF8 | 0.80 mm | 7-18 mm | 10-200 | | Phosphor Bronze or BeCu (ERM8), BeCu (ERF8) | | | |

(0.635 mm) .025" PITCH • RUGGED HIGH-SPEED HEADERS & SOCKETS

ERM6 - **POSITIONS PER ROW** - **01.5** - **PLATING OPTION** - **DV** - **A** - **OPTION** - **K** - **"X"R**

-10, -20, -30,
-40, -50, -60
(Standard Sizes)

-L
= 10 μ" (0.25 μm)
Gold on contact,
Matte Tin on tail

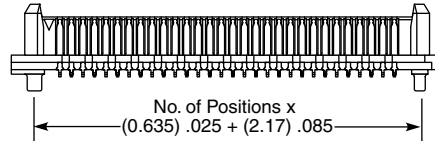
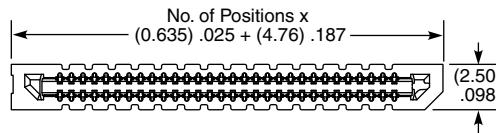
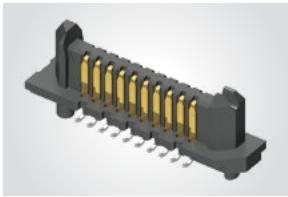
(Leave Blank for
No Weld Tab Pin)

-WT
= Weld Tab

-TR
= Tape & Reel

-FR
= Full Reel Tape & Reel
(must order maximum quantity
per reel; contact Samtec for
quantity breaks)

ERM6
Board Mates:
ERM6



MATED HEIGHT*

| ERF6 LEAD STYLE | ERM6 LEAD STYLE |
|-----------------|-----------------|
| | -01.5 |
| -03.5 | (5.00) .197 |

*Processing conditions will affect mated height.

View complete specifications at: samtec.com?ERM6

ERF6 - **POSITIONS PER ROW** - **03.5** - **PLATING OPTION** - **DV** - **A** - **OPTION** - **K** - **"X"R**

-10, -20, -30,
-40, -50, -60
(Standard Sizes)

-L
= 10 μ" (0.25 μm)
Gold on contact,
Matte Tin on tail

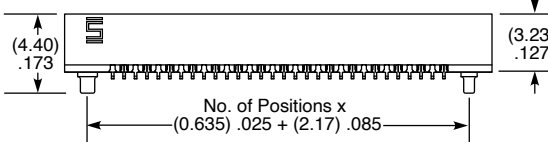
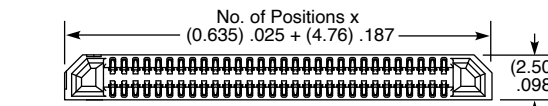
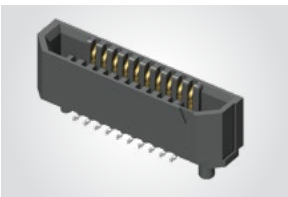
(Leave Blank for
No Weld Tab Pin)

-WT
= Weld Tab

-TR
= Tape & Reel

-FR
= Full Reel Tape & Reel
(must order maximum quantity
per reel; contact Samtec for
quantity breaks)

ERF6
Board Mates:
ERM6



MATED HEIGHT*

| ERF6 LEAD STYLE | ERM6 LEAD STYLE |
|-----------------|-----------------|
| | -01.5 |
| -03.5 | (5.00) .197 |

*Processing conditions will affect mated height.

View complete specifications at: samtec.com?ERF6

Notes:

Kapton pad and tape & reel packaging are standard.
Some lengths, styles and options are non-standard, non-returnable.

X-ON Electronics

Largest Supplier of Electrical and Electronic Components

Click to view similar products for [Board to Board & Mezzanine Connectors](#) category:

Click to view products by [Samtec](#) manufacturer:

Other Similar products are found below :

[589158040000018](#) [MDF7C-18P-2.54DSA\(55\)](#) [FCN-230C068-11](#) [FCN-268F012-G/BD](#) [FCN-268F036-G/BD](#) [FCN-268M012-G/0D](#) [FCN-268M024-G/1D](#) [FCN-723J004/1](#) [MIS-048-01-F-D-DP-K](#) [832-10-034-10-001000](#) [FX4C-80S-1.27DSA](#) [FCN-214Q030-G/0](#) [FCN-234P048-G/0](#) [FCN-235D050-G/C](#) [210-93-314-41-105000](#) [2-22603-0](#) [MDF7-40DP-2.54DSA\(55\)](#) [AXG720047](#) [5031084030](#) [MIT-114-03-F-D-K](#) [55323-1519](#) [DF33-2P-3.3DSA\(24\)](#) [YFT-20-05-H-03-SB-K](#) [503308-3040](#) [026-6203-PDB](#) [027-6203-PDB](#) [069159702701000](#) [10123981-102LF](#) [101A10019X](#) [55650-0588-C](#) [68682-310LF](#) [68684-306](#) [75140-7012](#) [87471-650](#) [YTW-30-07-H-Q-410-140](#) [194261-1](#) [FCN-268F024-G0D](#) [10124054-515LF](#) [68685-603](#) [8-1616154-3](#) [MIS-019-01-F-D](#) [FCN-268M024-G/3D](#) [20021832-06016C1LF](#) [KX15-20KLDL-E1000E](#) [MDF7-16DP-2.54DSA\(55\)](#) [AXE810124](#) [FCN-214J100-G/0](#) [FCN-230C068-E/S](#) [AXE812124](#) [AXE816124](#)