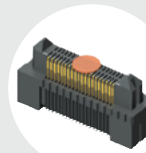
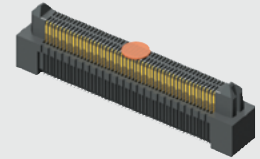


ERM5-040-02.0-L-DV-P-TR



ERM5-020-05.0-L-DV-K-TR



**ERM5 SERIES**

**(0.50 mm) .0197"**

# RUGGED HIGH-SPEED HEADER

## SPECIFICATIONS

For complete specifications and recommended PCB layouts see [www.samtec.com?ERM5](http://www.samtec.com?ERM5)

**Insulator Material:**

Black LCP

**Terminal Material:**

Phosphor Bronze or BeCu

**Plating:**

Au or Sn over

50 μ" (1.27 μm) Ni

**Current Rating (-DV to -DV):**

1.5 A per pin

(2 pins powered)

**Current Rating (-DV to -RA):**

1.6 A per pin

(2 pins powered)

**Operating Temp Range:**

-55 °C to +125 °C

**Voltage Rating:**

194 VAC mated with ERF5

**RoHS Compliant:**

Yes

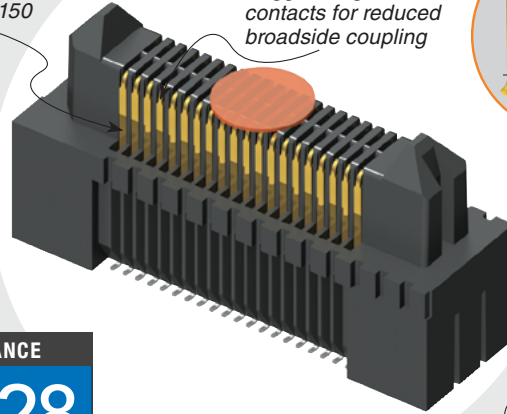
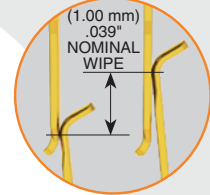
Mates with:  
**ERF5**

**RUGGEDIZED**  
BY SAMTEC

- Edge Rate® contacts
- High contact wipe

20 to 150  
I/Os

Rugged Edge Rate®  
contacts for reduced  
broadside coupling



7 mm, 9 mm, 10 mm, 11 mm  
or 12 mm stack height

### HIGH-SPEED CHANNEL PERFORMANCE

ERM5/ERF5 @ 7 mm Mated Stack Height

Rating based on Samtec reference channel.  
For full SI performance data visit [Samtec.com](http://Samtec.com)  
or contact [SIG@samtec.com](mailto:SIG@samtec.com)

**28**  
Gbps

## PROCESSING

**Lead-Free Solderable:**

Yes

**SMT Lead Coplanarity:**

(0.10 mm) .004" max (010-040)

(0.13 mm) .005" max (050-075)\*

\*(.004" stencil solution may be available; contact [IPG@samtec.com](mailto:IPG@samtec.com))

## RECOGNITIONS

For complete scope of recognitions see [www.samtec.com/quality](http://www.samtec.com/quality)



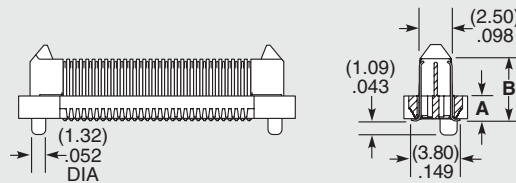
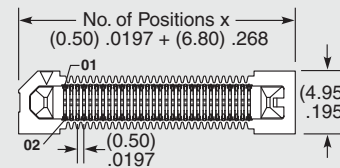
<b>ERM5</b>	<b>NO. OF POSITIONS PER ROW</b>	<b>LEAD STYLE</b>	<b>PLATING OPTION</b>	<b>DV</b>	<b>PICK &amp; PLACE PAD</b>	<b>TR</b>
	<b>-010, -020, -030, -040, -050, -060, -070, -075</b>	<b>-02.0</b> = 2 mm Body Height	<b>-L</b> = 10 μ" (0.25 μm) Gold on contact, Matte Tin on tail		(Required in callout) <b>-K</b> = (3.50 mm) .138" DIA Polyimide Film Pick & Place Pad (-04.0 & -05.0 lead style only)	
		<b>-04.0</b> = 4 mm Body Height			<b>-P</b> = Plastic Pick & Place Pad (-02.0 lead style only) (-010 positions not available)	
		<b>-05.0</b> = 5 mm Body Height				

**MATED HEIGHT\***

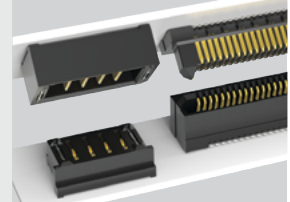
ERM5 LEAD STYLE	ERF5 LEAD STYLE	
	-05.0	-07.0
-02.0	(7.00) .276	(9.00) .354
-04.0	(9.00) .354	(11.00) .433
-05.0	(10.00) .394	(12.00) .472

\*Processing conditions will affect mated height.

LEAD STYLE	A	B
-02.0	(1.94) .076	(4.84) .191
-04.0	(3.94) .155	(6.84) .269
-05.0	(4.94) .194	(7.84) .309



## POWER/SIGNAL APPLICATION



Compatible with UMP/TUMPS for flexible two-piece power/signal solutions

## ALSO AVAILABLE (MOQ Required)

- Friction Lock
- Weld Tab
- Other platings

**Notes:**  
Patented

Some lengths, styles and options are non-standard, non-returnable.

Due to technical progress, all designs, specifications and components are subject to change without notice.

## X-ON Electronics

Largest Supplier of Electrical and Electronic Components

*Click to view similar products for* [Circular MIL Spec Tools, Hardware & Accessories](#) *category:*

*Click to view products by* [Samtec](#) *manufacturer:*

Other Similar products are found below :

[809-199-3](#) [001104](#) [300 04](#) [600-006-16](#) [600-079-06](#) [M10-101982-143](#) [M10-101982-163](#) [M10-101983-183](#) [M10-150912-083](#) [M10-454396-008](#) [602GB18808](#) [M225201-06](#) [M24758-20E21](#) [M2887610-BC](#) [M2887615-CD](#) [M38999/9-19B](#) [62GB-812-10](#) [630A007NF083A](#) [630B007M051A](#) [630BJ003NF032H](#) [637-149NF04B](#) [M39029/29-215](#) [650FS002NF16](#) [M81969-14-02](#) [660-008NF14S7-01](#) [660-009M22H8-03](#) [660-013NF19U6-210](#) [660-015M10S6-17](#) [660-015NF10S5-01](#) [660-015NF14R3.5-01](#) [660-023NF19H6-19](#) [660-024N09S5-104](#) [660-024NF11S12-01](#) [660-024NF11S3-01](#) [660-050XM17F4-01](#) [660-068NF25R6-30G](#) [660-070M23S8-04](#) [660-073MTCH9-20](#) [M83723/60-116RC](#) [M83723/61-18W](#) [M83723/61-218R](#) [M83723/61-224W](#) [667-224NF16](#) [M85049/118S22A](#) [M85049/126S11N](#) [M85049130-07M](#) [M85049140-09BC](#) [M85049/41-16A W/B](#) [687-697NF-1](#) [M85049/75-14-1](#) [M8504980-8](#)