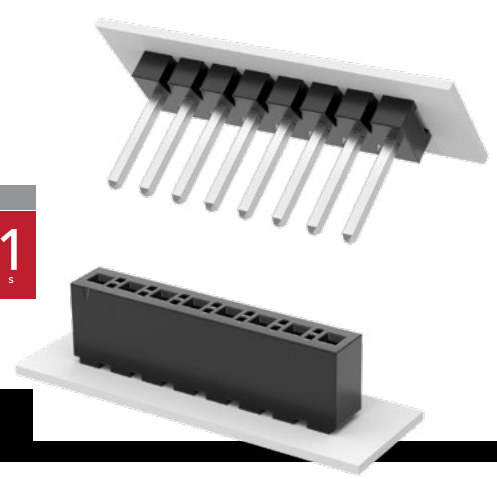


POWER HEADERS, STACKERS & SOCKETS

MAX
13.1
A m p s



(3.96 mm) .156" PITCH • FWJ, HFWJ, JW, FHP SERIES

FWJ, HFWJ, JW
Board Mates:
FHP

FHP
Board Mates:
FWJ, HFWJ, JW

SPECIFICATIONS

Insulator Material:
FWJ = Black Glass Filled Polyester
HFWJ, JW = Natural Liquid Crystal Polymer
FHP = Black LCP

Terminal Material (FWJ, HFWJ, JW):
Phosphor Bronze

Contact Material (FHP):
BeCu

Plating:
Sn over 50 μ " (1.27 μ m) Ni

Operating Temp Range:
-55 °C to +105 °C

Voltage Rating:
600 VAC/845 VDC

Insertion Depth (FHP):
(3.57 mm) .140" to (8.76 mm) .345" or pass-through from top

Wiping Distance (FHP):
(0.38 mm) .015"

PROCESSING

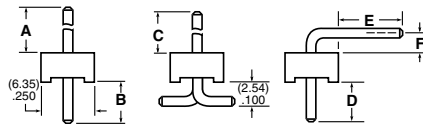
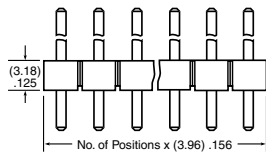
Lead-Free Solderable:
FWJ = No, Lead Wave only
HFWJ, JW, FHP = Yes

SMT Lead Coplanarity:
HFWJ, FWJ, JW = (0.20 mm) .008" max (02-16)*
(0.25 mm) .010" max (17-24)*
FHP = (0.15 mm) .006" max*
*(.004" stencil solution may be available; contact ipg@samtec.com)

Note:
Some lengths, styles and options are non-standard, non-returnable.

SERIES	NO. OF PINS	LEAD STYLE	PLATING OPTION	S	OTHER OPTIONS
--------	-------------	------------	----------------	---	---------------

FWJ Standard Header	01 thru 24	Specify LEAD STYLE from chart below	-T = Matte Tin		Leave blank for Through-hole -RA = Right-angle (Style -02 & -04 only) -VS = Surface Mount Requires HFWJ (2 pins/row minimum) Style -05 not available.
HFWJ High Temp Header					-P = Pick & Place Pad (3 Pos. min.) (6.98 mm) .275" min. post height (-VS only)



LEAD STYLE	A	B	C	D	E	F
-01	(11.43) .450	(4.45) .175	(10.46) .412	-	-	-
-02	(12.70) .500		(11.73) .462	(4.45) .175	(8.13) .320	(2.54) .100
-04	(20.55) .809	(3.96) .156	(19.10) .752	(3.96) .156	(13.56) .534	(4.95) .195
-05*	(3.81) .150	(12.07) .475	-	-	-	-

*FWJ Only

JW	NO. OF PINS	04	PLATING OPTION	S	STACK HEIGHT	POST HEIGHT	OTHER OPTIONS
----	-------------	----	----------------	---	--------------	-------------	---------------

02 thru 24

-T
= Matte Tin

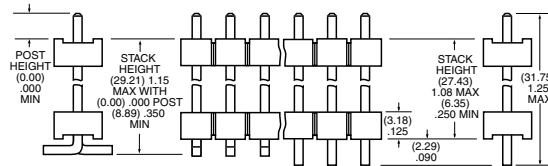
-“XXX”
= Stacker Height (in inches) (0.13 mm) .005" increments

-“XXX”
= Post Height (in inches)

Leave blank for Through-hole

-VS
= Surface Mount (2 pins/row minimum)

-P
= Pick & Place Pad (3 Pos. min.) (6.98 mm) .275" min. post height (-VS only)



Example: -250 = (6.35 mm) .250"

FHP	NO. OF PINS	LEAD STYLE	PLATING OPTION	S	OTHER OPTIONS
-----	-------------	------------	----------------	---	---------------

02 thru 24

-01
= Through-hole

-T
= Matte Tin

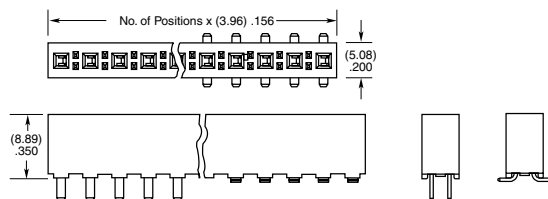
-02
= Surface Mount

-LC
= Locking Clip (Manual placement required) (-02 lead style only)

-TR
= Tape & Reel Packaging (Available on positions 2-18) (-02 lead style only)

-K
= (6.50 mm) .256" DIA Polyimide film Pick & Place Pad (2-4 positions require -“X”R) (-02 lead style only)

-FR
= Full Reel Tape & Reel (must order max. quantity per reel; contact Samtec for quantity breaks) (Available on positions 2-18) (-02 lead style only)



-01 -02

X-ON Electronics

Largest Supplier of Electrical and Electronic Components

Click to view similar products for [Power to the Board](#) category:

Click to view products by [Samtec](#) manufacturer:

Other Similar products are found below :

[6450171-4](#) [6450552-7](#) [6600323-8](#) [6643429-1](#) [6646040-2](#) [6651939-1](#) [6766604-1](#) [120959-1](#) [1393557-2](#) [1393532-2](#) [1393532-3](#) [1393532-4](#)
[1393557-1](#) [1600812-5](#) [1-6450861-2](#) [1744132-7](#) [1761122-1](#) [1766250-1](#) [1892109-1](#) [2-6450860-5](#) [2-6450870-0](#) [1-6450161-4](#) [1-6450850-6](#) [1-](#)
[6450869-6](#) [1645526-2](#) [1-6600130-0](#) [2005243-2](#) [377-0020-11130](#) [TE34-12-16P-F0](#) [51700-10201602AALF](#) [5-6450830-6](#) [5646956-4](#) [377-](#)
[0080-11131A](#) [4-6450830-9](#) [4-6600333-3](#) [10125416-4050LF](#) [10130248-005LF](#) [6600320-3](#) [3-6450860-5](#) [1888123-2](#) [6450166-1](#) [6643978-1](#)
[6766605-1](#) [701-15-02109](#) [N11444](#) [6651938-1](#) [6450810-7](#) [46437-1112](#) [1-1589677-8](#) [5646956-5](#)