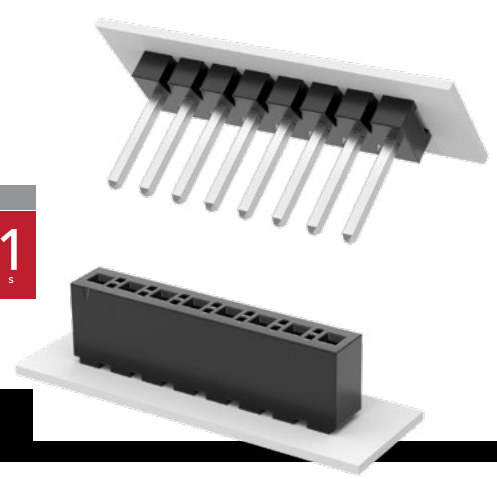


# POWER HEADERS, STACKERS & SOCKETS

MAX  
**13.1**  
A m p s



**(3.96 mm) .156" PITCH • FWJ, HFWJ, JW, FHP SERIES**

**FWJ, HFWJ, JW**  
Board Mates:  
FHP

**FHP**  
Board Mates:  
FWJ, HFWJ, JW

## SPECIFICATIONS

**Insulator Material:**  
FWJ = Black Glass Filled Polyester  
HFWJ, JW = Natural Liquid Crystal Polymer  
FHP = Black LCP

**Terminal Material (FWJ, HFWJ, JW):**  
Phosphor Bronze  
**Contact Material (FHP):**  
BeCu

**Plating:**  
Sn over 50  $\mu$ " (1.27  $\mu$ m) Ni

**Operating Temp Range:**  
-55 °C to +105 °C

**Voltage Rating:**  
600 VAC/845 VDC

**Insertion Depth (FHP):**  
(3.57 mm) .140" to (8.76 mm) .345" or pass-through from top

**Wiping Distance (FHP):**  
(0.38 mm) .015"

## PROCESSING

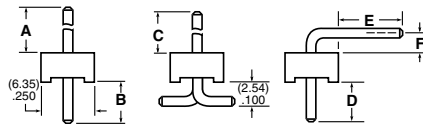
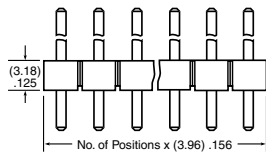
**Lead-Free Solderable:**  
FWJ = No, Lead Wave only  
HFWJ, JW, FHP = Yes

**SMT Lead Coplanarity:**  
HFWJ, FWJ, JW = (0.20 mm) .008" max (02-16)\*  
(0.25 mm) .010" max (17-24)\*  
FHP = (0.15 mm) .006" max\*  
\*(.004" stencil solution may be available; contact ipg@samtec.com)

**Note:**  
Some lengths, styles and options are non-standard, non-returnable.

SERIES	NO. OF PINS	LEAD STYLE	PLATING OPTION	S	OTHER OPTIONS
--------	-------------	------------	----------------	---	---------------

<b>FWJ</b> Standard Header	<b>01 thru 24</b>	Specify LEAD STYLE from chart below	<b>-T</b> = Matte Tin		Leave blank for Through-hole <b>-RA</b> = Right-angle (Style -02 & -04 only) <b>-VS</b> = Surface Mount Requires HFWJ (2 pins/row minimum) Style -05 not available.
<b>HFWJ</b> High Temp Header					<b>-P</b> = Pick & Place Pad (3 Pos. min.) (6.98 mm) .275" min. post height (-VS only)

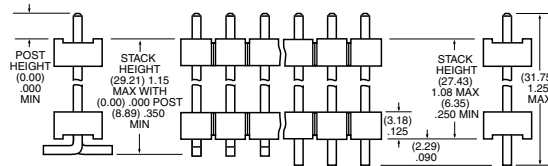


LEAD STYLE	A	B	C	D	E	F
-01	(11.43) .450	(4.45) .175	(10.46) .412	-	-	-
-02	(12.70) .500	(11.73) .462	(4.45) .175	(8.13) .320	(2.54) .100	
-04	(20.55) .809	(3.96) .156	(19.10) .752	(3.96) .156	(13.56) .534	(4.95) .195
-05*	(3.81) .150	(12.07) .475	-	-	-	-

\*FWJ Only

JW	NO. OF PINS	04	PLATING OPTION	S	STACK HEIGHT	POST HEIGHT	OTHER OPTIONS
----	-------------	----	----------------	---	--------------	-------------	---------------

**02 thru 24**  
**-T**  
= Matte Tin



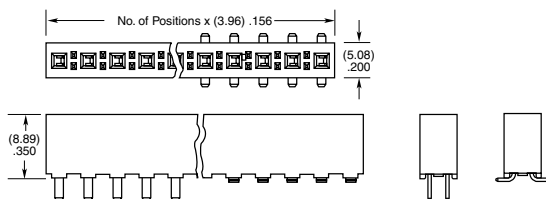
**-"XXX"**  
= Stacker Height (in inches) (0.13 mm) .005" increments  
Example: -250 = (6.35 mm) .250"

**-"XXX"**  
= Post Height (in inches)

Leave blank for Through-hole  
**-VS**  
= Surface Mount (2 pins/row minimum)  
**-P**  
= Pick & Place Pad (3 Pos. min.) (6.98 mm) .275" min. post height (-VS only)

FHP	NO. OF PINS	LEAD STYLE	PLATING OPTION	S	OTHER OPTIONS
-----	-------------	------------	----------------	---	---------------

**02 thru 24**  
**-01**  
= Through-hole  
**-02**  
= Surface Mount  
**-T**  
= Matte Tin



**-01** **-02**

**-LC**  
= Locking Clip (Manual placement required) (-02 lead style only)

**-TR**  
= Tape & Reel Packaging (Available on positions 2-18) (-02 lead style only)

**-K**  
= (6.50 mm) .256" DIA Polyimide film Pick & Place Pad (2-4 positions require -"X"R) (-02 lead style only)

**-FR**  
= Full Reel Tape & Reel (must order max. quantity per reel; contact Samtec for quantity breaks) (Available on positions 2-18) (-02 lead style only)

## X-ON Electronics

Largest Supplier of Electrical and Electronic Components

*Click to view similar products for [Power to the Board](#) category:*

*Click to view products by [Samtec](#) manufacturer:*

Other Similar products are found below :

[6450552-7](#) [6643429-1](#) [6646040-2](#) [6766604-1](#) [120959-1](#) [1393557-2](#) [1393532-2](#) [1393532-3](#) [1393532-4](#) [1393557-1](#) [1744132-7](#) [1766250-1](#)  
[1892109-1](#) [1-6450850-6](#) [1-6450869-6](#) [1645526-2](#) [2005243-2](#) [377-0020-11130](#) [MC116N](#) [TE34-12-16P-F0](#) [51700-10201602AALF](#) [51970-004](#) [5-6450830-6](#) [4-6600333-3](#) [10125416-4050LF](#) [10130248-005LF](#) [6600320-3](#) [IPBT-103-H1-T-S-RA](#) [1888123-2](#) [6766605-1](#) [701-15-02109](#)  
[6450810-7](#) [46437-1112](#) [6450813-2](#) [6450842-4](#) [10108877-R24403SLF](#) [1645523-1](#) [PSS-06-01-T-S](#) [FWS-03-04-T-S](#) [51760-10301603ABLF](#)  
[MDF6-TA2022HC](#) [FWS-05-01-T-S](#) [51720-10206002AALF](#) [QE-POL-KEY](#) [FWS-08-01-T-S](#) [698-0075-04](#) [6651670-1](#) [MC120N](#) [2-1600788-6](#)  
[1761385-3](#)