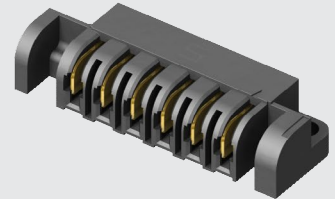


FMPT-06-01-L-S-V



FMPS-06-01-L-S-RA-SD

(5.00 mm) .1969"

FMPS, FMPT SERIES

# "HINGING" 30 A POWER HEADER & SOCKET

## SPECIFICATIONS

For complete specifications see [www.samtec.com?FMPS](http://www.samtec.com?FMPS) or [www.samtec.com?FMPT](http://www.samtec.com?FMPT)

**Insulator Material:**

Black LCP

**Terminal Material:**

Copper Alloy

**Plating:** Sn or Au over 50 μ" (1.27 μm) Ni

**Operating Temp Range:** -55 °C to +105 °C with Tin; -55 °C to +125 °C with Gold

**Voltage Rating:**

525 VAC/742 VDC

**Standard Creepage:**

FMPS: (3.67 mm) .144"

FMPT: (6.53 mm) .257"

**Standard Clearance:**

(2.71 mm) .106"

**RoHS Compliant:** Yes

**Lead-Free Solderable:** Yes

FMPT/FMPS	
PINS	CURRENT RATING (PER CONTACT)
1	26.7 A
2	22.9 A
3	19.1 A
4	17.6 A
8	15.8 A

-L PLATING

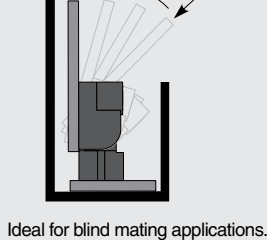
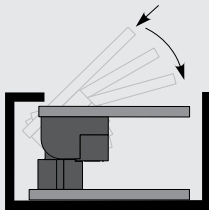
## RECOGNITIONS

For complete scope of recognitions see [www.samtec.com/quality](http://www.samtec.com/quality)



FILE NO. E111594

## APPLICATION



Ideal for blind mating applications.

**Note:** Some sizes, styles and options are non-standard, non-returnable.

FMPS
NO. OF POSITIONS
01
PLATING OPTION
S
RA
OPTION

**02, 04, 06, 08**  
(Standard sizes)

**-L**  
= 10 μ" (0.25 μm) Gold on contact,  
Matte Tin on tail

**-T**  
= Matte Tin

**-SD**  
= Screw Down  
(Not Available with -LC)

**-LC**  
= Locking Clip  
(Manual placement required)  
(Not Available with -SD)

NUMBER OF POSITIONS	A	B	C
-02	(22.63) .891	(16.28) .641	(15.63) .615
-04	(32.63) 1.285	(26.28) 1.035	(25.63) 1.009
-06	(42.63) 1.678	(36.28) 1.428	(35.63) 1.403
-08	(52.63) 2.072	(46.28) 1.822	(45.63) 1.796

**-SD OPTION**  
(6 POSITIONS SHOWN)

**-LC OPTION**  
(2 POSITIONS SHOWN)

**ALSO AVAILABLE**  
(MOQ Required)

- Other sizes

CREEPAGE AND CLEARANCE

Selectively loading contacts achieves customer specific creepage and clearance requirements.  
Contact [asp@samtec.com](mailto:asp@samtec.com)

FMPT
NO. OF POSITIONS
01
PLATING OPTION
S
V
OPTION

**02, 04, 06, 08**  
(Standard sizes)

**-L**  
= 10 μ" (0.25 μm) Gold on contact,  
Matte Tin on tail

**-T**  
= Matte Tin

**-LC**  
= Locking Clip  
(Manual placement required)

NUMBER OF POSITIONS	A	B
-02	(22.63) .891	(16.53) .651
-04	(32.63) 1.285	(26.53) 1.044
-06	(42.63) 1.678	(36.53) 1.438
-08	(52.63) 2.072	(46.53) 1.832

**-LC**

## X-ON Electronics

Largest Supplier of Electrical and Electronic Components

*Click to view similar products for [Power to the Board](#) category:*

*Click to view products by [Samtec](#) manufacturer:*

Other Similar products are found below :

[6450552-7](#) [6643429-1](#) [6646040-2](#) [6766604-1](#) [120959-1](#) [1393557-2](#) [1393532-2](#) [1393532-3](#) [1393532-4](#) [1393557-1](#) [1744132-7](#) [1766250-1](#)  
[1892109-1](#) [1-6450850-6](#) [1-6450869-6](#) [1645526-2](#) [2005243-2](#) [377-0020-11130](#) [MC116N](#) [TE34-12-16P-F0](#) [51700-10201602AALF](#) [51970-004](#) [5-6450830-6](#) [4-6600333-3](#) [10125416-4050LF](#) [10130248-005LF](#) [6600320-3](#) [IPBT-103-H1-T-S-RA](#) [1888123-2](#) [6766605-1](#) [701-15-02109](#)  
[6450810-7](#) [46437-1112](#) [6450813-2](#) [6450842-4](#) [10108877-R24403SLF](#) [1645523-1](#) [PSS-06-01-T-S](#) [FWS-03-04-T-S](#) [51760-10301603ABLF](#)  
[MDF6-TA2022HC](#) [FWS-05-01-T-S](#) [51720-10206002AALF](#) [QE-POL-KEY](#) [FWS-08-01-T-S](#) [698-0075-04](#) [6651670-1](#) [MC120N](#) [2-1600788-6](#)  
[1761385-3](#)