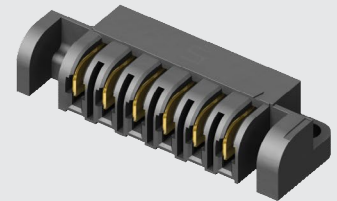


FMPT-06-01-L-S-V



FMPS-06-01-L-S-RA-SD

(5.00 mm) .1969"

FMPS, FMPT SERIES

# "HINGING" 30 A POWER HEADER & SOCKET

## SPECIFICATIONS

For complete specifications see [www.samtec.com?FMPS](http://www.samtec.com?FMPS) or [www.samtec.com?FMPT](http://www.samtec.com?FMPT)

**Insulator Material:**

Black LCP

**Terminal Material:**

Copper Alloy

**Plating:** Sn or Au over

50 μ" (1.27 μm) Ni

**Operating Temp Range:**

-55 °C to +105 °C with Tin;

-55 °C to +125 °C with Gold

**Voltage Rating:**

525 VAC/742 VDC

**Standard Creepage:**

FMPS: (3.67 mm) .144"

FMPT: (6.53 mm) .257"

**Standard Clearance:**

(2.71 mm) .106"

**RoHS Compliant:** Yes

**Lead-Free Solderable:** Yes

FMPT/FMPS	
PINS	CURRENT RATING (PER CONTACT)
1	26.7 A
2	22.9 A
3	19.1 A
4	17.6 A
8	15.8 A

-L PLATING

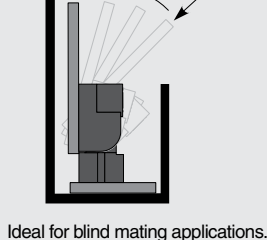
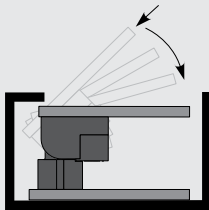
## RECOGNITIONS

For complete scope of recognitions see [www.samtec.com/quality](http://www.samtec.com/quality)



FILE NO. E111594

## APPLICATION



Ideal for blind mating applications.

**Note:** Some sizes, styles and options are non-standard, non-returnable.

**FMPS** - **NO. OF POSITIONS** - **01** - **PLATING OPTION** - **S** - **RA** - **OPTION**

**02, 04, 06, 08**  
(Standard sizes)

**-L**  
= 10 μ" (0.25 μm) Gold on contact, Matte Tin on tail

**-T**  
= Matte Tin

**-SD**  
= Screw Down  
(Not Available with -L)

**-LC**  
= Locking Clip  
(Manual placement required)  
(Not Available with -SD)

NUMBER OF POSITIONS	A	B	C
-02	(22.63) .891	(16.28) .641	(15.63) .615
-04	(32.63) 1.285	(26.28) 1.035	(25.63) 1.009
-06	(42.63) 1.678	(36.28) 1.428	(35.63) 1.403
-08	(52.63) 2.072	(46.28) 1.822	(45.63) 1.796

**CREEPAGE AND CLEARANCE**

Selectively loading contacts achieves customer specific creepage and clearance requirements.  
Contact [asp@samtec.com](mailto:asp@samtec.com)

**ALSO AVAILABLE**  
(MOQ Required)

- Other sizes

**FMPT** - **NO. OF POSITIONS** - **01** - **PLATING OPTION** - **S** - **V** - **OPTION**

**02, 04, 06, 08**  
(Standard sizes)

**-L**  
= 10 μ" (0.25 μm) Gold on contact, Matte Tin on tail

**-T**  
= Matte Tin

**-LC**  
= Locking Clip  
(Manual placement required)

NUMBER OF POSITIONS	A	B
-02	(22.63) .891	(16.53) .651
-04	(32.63) 1.285	(26.53) 1.044
-06	(42.63) 1.678	(36.53) 1.438
-08	(52.63) 2.072	(46.53) 1.832

## X-ON Electronics

Largest Supplier of Electrical and Electronic Components

*Click to view similar products for [Power to the Board](#) category:*

*Click to view products by [Samtec](#) manufacturer:*

Other Similar products are found below :

[6450171-4](#) [6450552-7](#) [6600323-8](#) [6643429-1](#) [6646040-2](#) [6651939-1](#) [6766604-1](#) [120959-1](#) [1393557-2](#) [1393532-2](#) [1393532-3](#) [1393532-4](#)  
[1393557-1](#) [1600812-5](#) [1-6450861-2](#) [1744132-7](#) [1761122-1](#) [1766250-1](#) [1892109-1](#) [2-6450860-5](#) [2-6450870-0](#) [1-6450161-4](#) [1-6450850-6](#) [1-](#)  
[6450869-6](#) [1645526-2](#) [1-6600130-0](#) [2005243-2](#) [377-0020-11130](#) [TE34-12-16P-F0](#) [51700-10201602AALF](#) [5-6450830-6](#) [5646956-4](#) [377-](#)  
[0080-11131A](#) [4-6450830-9](#) [4-6600333-3](#) [10125416-4050LF](#) [10130248-005LF](#) [6600320-3](#) [3-6450860-5](#) [1888123-2](#) [6450166-1](#) [6643978-1](#)  
[6766605-1](#) [701-15-02109](#) [N11444](#) [6651938-1](#) [6450810-7](#) [46437-1112](#) [1-1589677-8](#) [5646956-5](#)