

75 Ω HIGH-DENSITY BNC TO 12 GHz

HIGH-DENSITY BNC Cable Assemblies

RFA6T, RFB6T, RFB8T, RFC6T, RFC8T



SERIES	END 1 CONNECTOR	END 2 CONNECTOR	OVERALL LENGTH
RFC6T* = 12G-SDI, Belden 4694R Cable RFC8T* = 12G-SDI, Belden 4855R Cable RFA6T = RG 6 Cable RFB6T = Belden 1694A Cable RFB8T = Belden 1855A Cable		-H4SP3 = 75 Ω High-Density BNC Straight Plug	-“XXXX” = Overall Length in millimeters -0300 (300 mm) 11.81" minimum

ALSO AVAILABLE

75 Ω: DIN 1.0/2.3, BNC = RFB6T, RFA6T, RFC6T
 75 Ω: DIN 1.0/2.3 = RFB8T, RFC8T

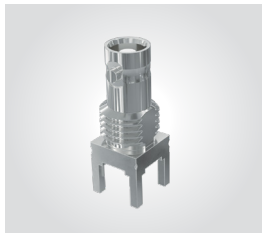
*Designed to meet SMPTE 2082 12G-SDI specifications.

HIGH-DENSITY BNC Board Connectors

HDBNC-TH, HDBNC-EM, HDBNC-BH, HDBNC-BM

Cable Mates:

RFA6T, RFB6T, RFB8T, RFC6T, RFC8T



HDBNC	GENDER	TYPE	PLATING	ORIENTATION	TERMINATION	PACKAGING
	-J = Jack	-P = PCB Mount	-GN = 10 μ" (0.25 μm) Gold contact, 100 μ" (2.54 μm) Nickel shell	-ST = Straight -RA = Right-angle	-BH1 = Through-hole -BH2 = Through-hole (2.36 mm) .093" PCB (-RA only) -BM1D = Die Cast Bulkhead Mixed Technology for (1.60 mm) .062" PCB (-RA only) -BM2D = Die Cast Bulkhead Mixed Technology for (3.18 mm) .125" PCB (-RA only)	Leave blank for individually bagged. -B Bulk packaged (-BHX only)
				 -ST-EM1	 -EM1 = Edge Mount (-ST only)	
				 -RA-BH2	 -ST-BH1	
				 -RA-BM1D & -BM2D (BALANCED FOR PICK-AND-PLACE)	 -ST-BH1	
					 -ST-TH1 = Through-hole, Three Legs (-ST only)	

Notes:

Designed to meet SMPTE 2082 12G-SDI specifications.

Additional plating options available on Cable Assemblies, Cable Connectors and Board Connectors. Contact RFGroup@samtec.com

HIGH-DENSITY BNC Cable Connectors

HDBNC-CA



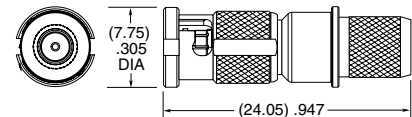
CONNECTORS FOR INDUSTRY STANDARD CABLES	
HDBNC-P-C-GN-ST-CA6	RG 6, Belden 1694A or Belden 4694R Cable
HDBNC-P-C-GN-ST-CA8	Belden 1855A or Belden 4855R Cable

Add "-B" to the end of the part number for bulk packaging (100 max.)

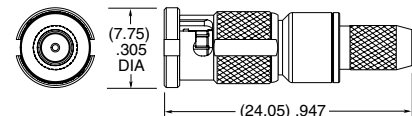
P-C = Cable Plug

GN = Plating (10 μ" Gold on contact, Nickel on outer contact & shell)

ST = Straight



-CA6



-CA8

Supplied with pins and ferrules. See website with dimensions.

Designed to meet SMPTE 2082 12G-SDI specifications.

X-ON Electronics

Largest Supplier of Electrical and Electronic Components

Click to view similar products for [RF Connectors](#) / [Coaxial Connectors](#) category:

Click to view products by [Samtec](#) manufacturer:

Other Similar products are found below :

[89674-0827](#) [6059674-1](#) [630059-000](#) [6501-1071-002](#) [6769](#) [7002-1541-010](#) [7002-1572-002](#) [7004-1512-000](#) [7009-1511-004](#) [7101-1541-010](#)
[7101-1571-002](#) [7105-1521-002](#) [7203-1571-003](#) [7209-1511-011](#) [7210-1511-040](#) [7242-1511-000](#) [7405-1521-005](#) [7405-1521-802](#)
[804S01D04M040](#) [8527](#) [8547](#) [FS11V](#) [877931](#) [8808-1511-001](#) [9049-9513-000](#) [9074-9513-000](#) [PL11C-026](#) [PL40-36](#) [9408-1113-000](#) [980-](#)
[8666-005](#) [11 SMA-50-2-6 / 111 NE](#) [11 SMA-50-3-6 / 111 NE](#) [1-201144-1](#) [120919](#) [R107003010W](#) [R112186000](#) [R113053000W](#) [R113082097](#)
[R113236000](#) [R114083000](#) [R114670000W](#) [R123415000W](#) [R124076320](#) [R124076450](#) [R124175123](#) [R125075000W](#) [R125075001](#)
[R125172000W](#) [R125415030](#) [R141007161](#)