

HDMR-19-01-S-SM-PF



HDMR-19-02-S-SM



HDMR-29-01-S-SM

**HDMR SERIES**

# HIGH-SPEED I/O RECEPTACLES

**SPECIFICATIONS**

For complete specifications and recommended PCB layouts see [www.samtec.com?HDMR](http://www.samtec.com?HDMR)

**Insulator Material:**

High Temperature Thermoplastic

**Contact Material:**

Copper Alloy

**Shell Material:**

Steel

**Operating Temp Range:**

-25 °C to +85 °C

**Plating:**

Gold on Contacts, Nickel on Shell and Tin on Tails

**Current Rating:**

1.3 A per pin (6 adjacent pins powered)

**Voltage Rating:**

40 VAC

**Minimum Cycles:**

100

**Lead-Free Solderable:**

Yes

**RoHS Compliant:**

Yes

Meets Digital Display Working Group Single Monitor Interface Specifications

Optional Panel Flange (19 position only)

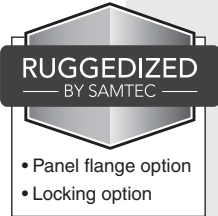
Hot Pluggable

Selectively Plated

19 or 29 Positions

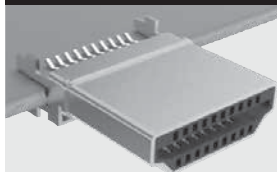
Surface Mount or Through-hole Signal Leads

Through-hole or Surface Mount (19 only) Ground tails



- Panel flange option
- Locking option

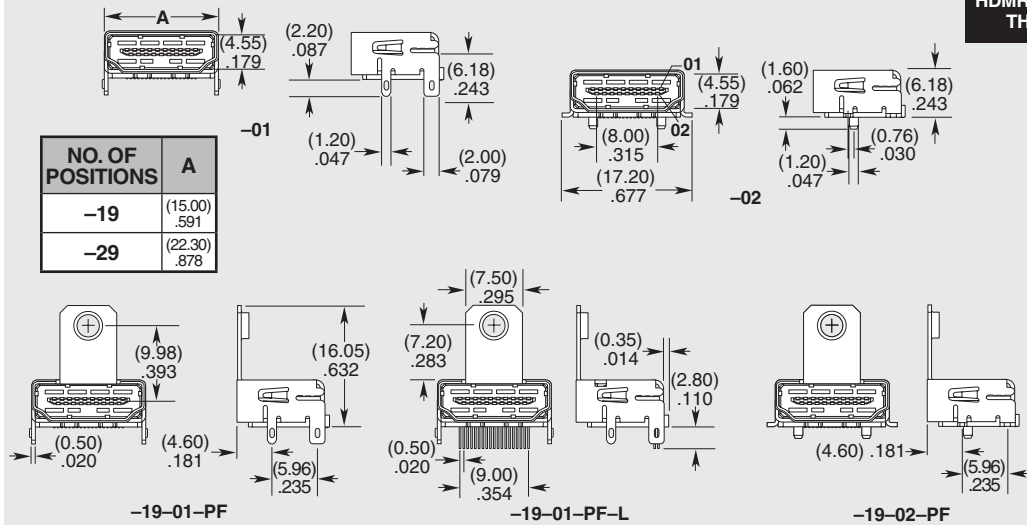
**OTHER SOLUTIONS**



HDMP is an Edge Mount plug that mates to HDMR receptacles.

Call Samtec for HDMP Series specifications.

HDMR	NO. OF POSITIONS	LEAD STYLE	PLATING	TAIL OPTION	OPTIONS
	<b>-19</b> = 19 Positions / Mates with HPXXX 5 Pairs	<b>-01</b> = Through-hole Ground Tails	<b>-S</b> = 30 μm (0.76 μm) Gold on Mating Area, Tin on Tails	<b>-SM</b> = Surface Mount (Signal Leads)	(Leave Blank for no Panel Flange)
	<b>-29</b> = 29 Positions / Mates with HPXXX 8 Pairs	<b>-02</b> = Surface Mount Ground Tails (-19 only)		<b>-TH</b> = Through-hole (Only available on HDMR-19-01-X-TH-PF-L)	<b>-PF</b> = Panel Flange
					<b>-L</b> = Locking Option (Only available on HDMR-19-01-X-TH-PF-L)



**Note:** Some lengths, styles and options are non-standard, non-returnable.

Due to technical progress, all designs, specifications and components are subject to change without notice.

[WWW.SAMTEC.COM](http://WWW.SAMTEC.COM)

All parts within this catalog are built to Samtec's specifications. Customer specific requirements must be approved by Samtec and identified in a Samtec customer-specific drawing to apply.

## X-ON Electronics

Largest Supplier of Electrical and Electronic Components

*Click to view similar products for [Automotive Connectors](#) category:*

*Click to view products by [Samtec](#) manufacturer:*

Other Similar products are found below :

[003-018-000](#) [600858](#) [60403001](#) [60993906-B](#) [60993913-B](#) [629515004020001](#) [M902-2131](#) [M902-2161](#) [M902-2344](#) [72.330.1035.1](#)  
[73.353.4028.0](#) [F118010](#) [F119300-B](#) [F132210](#) [F132210-B](#) [F166900](#) [F180100](#) [F258300](#) [F258300-B](#) [F294300-B](#) [F339100](#) [F339700](#) [F358300-](#)  
[B](#) [F374110](#) [F407400](#) [F412210](#) [F427600](#) [F444110](#) [F487000](#) [F495100-B](#) [F500900-B](#) [F509500B-B](#) [770444-1](#) [776880-1](#) [827153-1](#) [881735-1](#)  
[8N1515-32-24P](#) [9-1326727-8](#) [9-1326729-8](#) [925467-1](#) [925474-1](#) [928905-1](#) [936398-2](#) [964562-1](#) [964562-4](#) [964731-2](#) [965051-1](#) [968782-1](#)  
[GT17SA-8DS-HU](#) [GT17VS-10DP-5.2CF](#)