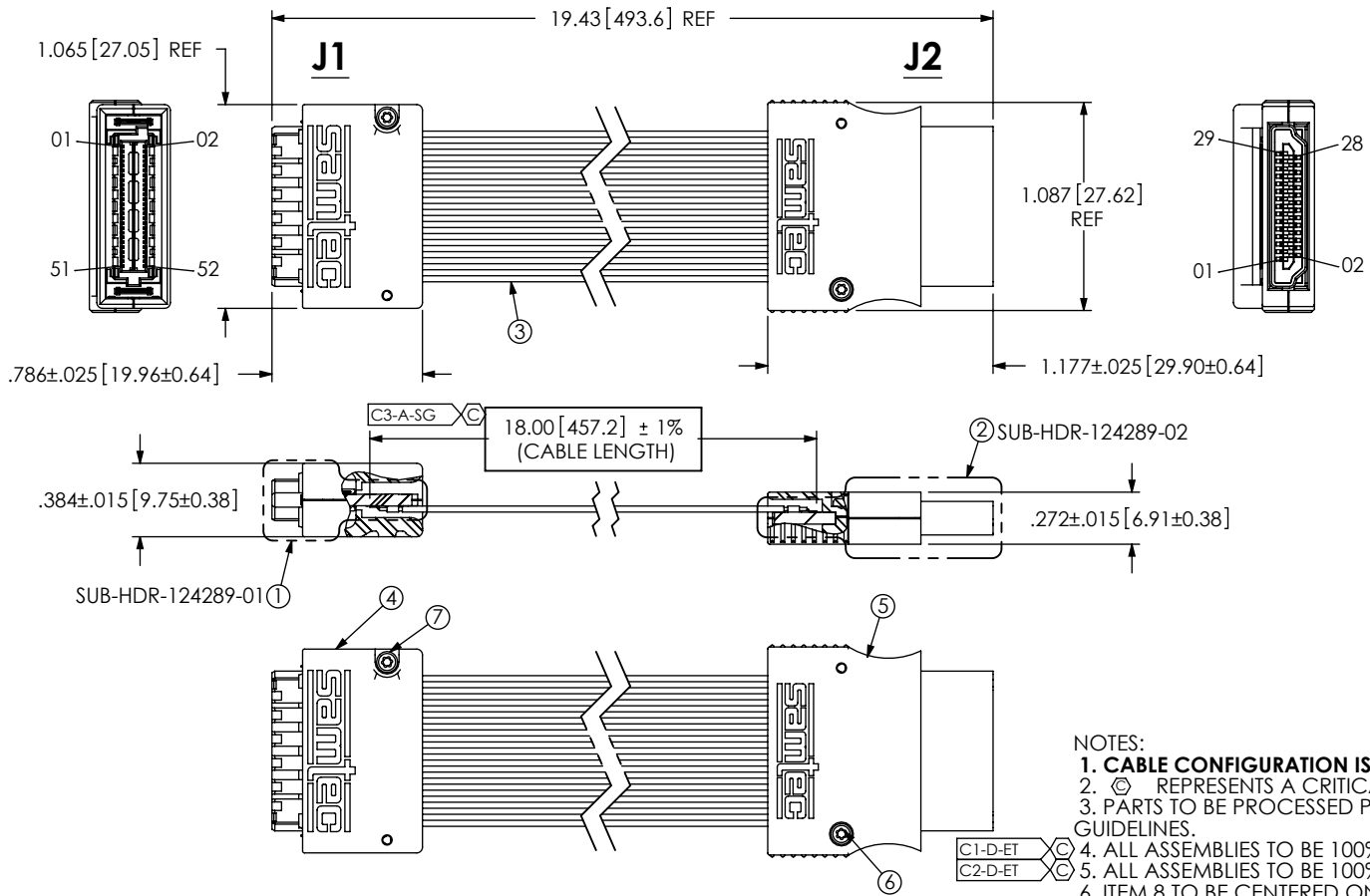


HDR SETUP OPTION:
EQCD-1 BANK
PCB SETUP OPTION:
OPTION 4

THIS PRODUCT MANUFACTURED WITH LEAD-FREE PROCESSING

REVISION		
F	AC	G LEWIS
9/26/2011	ECN-163313	
UPDATE MODEL FOR ASP-111519-01-C. UPDATE TO LONGER LENGTH STS.		
G	AC	G LEWIS
4/30/2012	ECN-176962	
SHT 2 SUB SIDE VIEW: UPDATE CONN TO SHOW SHIELD TERMINALS CLIPPED		
H	FA	G LEWIS
8/1/2013	ECN-208860	
NOTE 6 SHOULD BE ITEM 8 NOT 7		
J	JW	A SHROUT
1/19/2014	ECN-219424	
SHT 2, J1 VIEW: ADD BALLOON 3; BOM: ITEM 3: CHG PT-1-24-18-29 TO PT-1-24-01-152, CHG .04545 TO .04167; ITEM 4: CHG TP-07 TO TP-38, CHG .09191 TO .08333.		



J1	CABLE	J2
GND	GROUND	29
GND	GROUND	28
1	1	27
3	GROUND	26
5	2	25
7	3	24
9	4	23
11	5	22
13	6	21
15	7	20
17	8	19
19	9	18
21	10	17
23	11	16
25	12	15
27	13	14
29	14	13
31	15	12
33	16	11
35	17	10
37	18	9
39	19	8
41	20	7
43	21	6
45	22	5
47	23	4
49	GROUND	3
51	24	2
GND	GROUND	1

- NOTES:
1. CABLE CONFIGURATION IS NON-STANDARD.
 2. Ⓢ REPRESENTS A CRITICAL DIMENSION.
 3. PARTS TO BE PROCESSED PER SAMTEC BOUNDARY DOCUMENT GUIDELINES.
 4. ALL ASSEMBLIES TO BE 100% ELECTRICALLY TESTED.
 5. ALL ASSEMBLIES TO BE 100% HI-POT TESTED AT 300V.
 6. ITEM 8 TO BE CENTERED ON ITEM 3 AS SHOWN. ITEM 8 TO CONTAIN: LINE 1 - PART NUMBER "HDR-XXXXXX-XX", LINE 2 SHOP ORDER NUMBER "XXXXXX", AND LINE 3 - DATE CODE "XXXXX".
 7. FOR PROCESSING INFORMATION ON SUB-ASSEMBLIES, REFERENCE SUB-HDR-124289-XX TRAVELER.XLS.
 8. FOR SUB-ASSEMBLY AND FINISHED GOOD PACKAGING REQUIREMENTS, REFERENCE PACKAGING STANDARD CO-HD-WI-3033-M.
 9. PANEL PCB-100753-HDR-XX YIELDS (5) PCB-100753-HDR-01 BOARDS AND PANEL PCB-100754-HDR-XX YIELDS (5) PCB-100754-HDR-01 BOARDS.

PART #	DESCRIPTION
HDR-124289-01-6QDPS	(AS SHOWN)

ITEM NO.	PART NUMBER	DESCRIPTION	QUANTITY	MATERIAL
1	SUB-HDR-124289-01	SUB ASSEMBLY	1	SUB ASSEMBLY
2	SUB-HDR-124289-02	SUB ASSEMBLY	1	PCB
3	SUB-TCF-3450F-25-02-18.00	34 AWG COAX CABLE	1	SUB ASSEMBLY
4	ASP-111519-01-C	HOUSING	2	IDEMITSU XAREC EA522BK, COLOR: BLACK
5	PDP-29-03	HOUSING	2	IDEMITSU XAREC EA522BK, COLOR: BLACK
6	STS-01	FASTENER	2	LOW CARBON STEEL
7	STS-04	FASTENER	2	LOW CARBON STEEL
8	HDRL-11	LABEL	1	SELF LAMINATING VINYL, B-427

TOLERANCES DO NOT APPLY TO REFERENCE DIMENSIONS, UNLESS OTHERWISE SPECIFIED. DIMENSIONS ARE IN INCHES.
TOLERANCES ARE:
DECIMALS .XX: ±.01 [3]
.XXX: ±.005 [13]
.XXXX: ±.0020 [051]
ANGLES 2°

PROPRIETARY NOTE
THIS DOCUMENT CONTAINS INFORMATION CONFIDENTIAL AND PROPRIETARY TO SAMTEC, INC. AND SHALL NOT BE REPRODUCED OR TRANSFERRED TO OTHER DOCUMENTS OR DISCLOSED TO OTHERS OR USED FOR ANY PURPOSE OTHER THAN THAT WHICH IT WAS OBTAINED WITHOUT THE EXPRESSED WRITTEN CONSENT OF SAMTEC, INC.

DO NOT SCALE DRAWING SHEET SCALE: 1:1

F:\d\wg\hdr\124000\hdr-124289-xx-6qdpd\HDR-124289-XX-6QDPS.SLDDRW

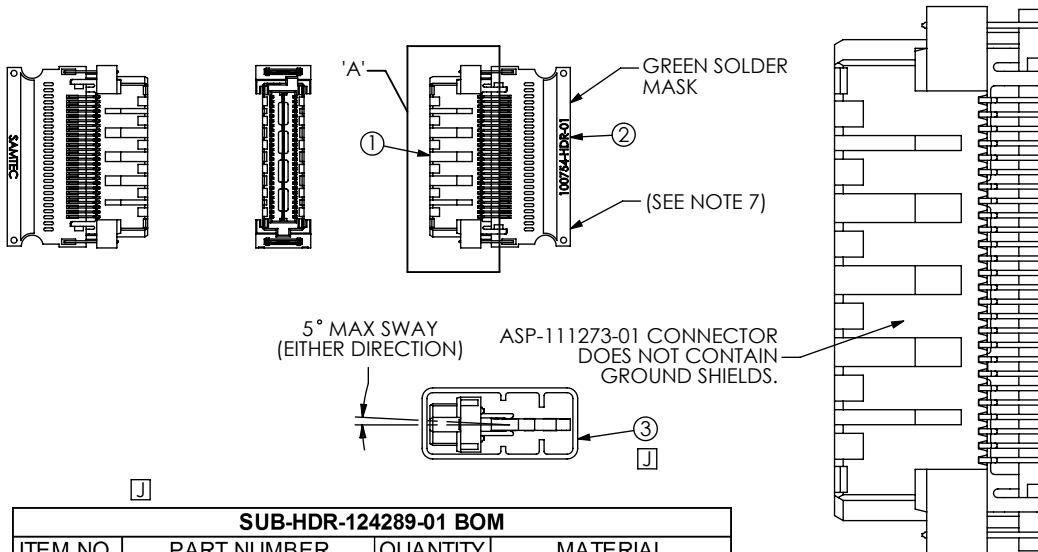
520 PARK EAST BLVD, NEW ALBANY, IN 47150
PHONE: 812-944-6733 FAX: 812-948-5047
e-Mail info@SAMTEC.com code 55322

DESCRIPTION: CUSTOM HDR CABLE ASSEMBLY
DWG. NO. HDR-124289-XX-6QDPS
BY: J.BORGELT 03/15/2006 SHEET 1 OF 2

THIS PRODUCT MANUFACTURED WITH LEAD-FREE PROCESSING

HDR SETUP OPTION:
SUB-XQCD-03-1 BANK
PCB SETUP OPTION:
OPTION 4

J1
SUB-HDR-124289-01



SUB-HDR-124289-01 BOM

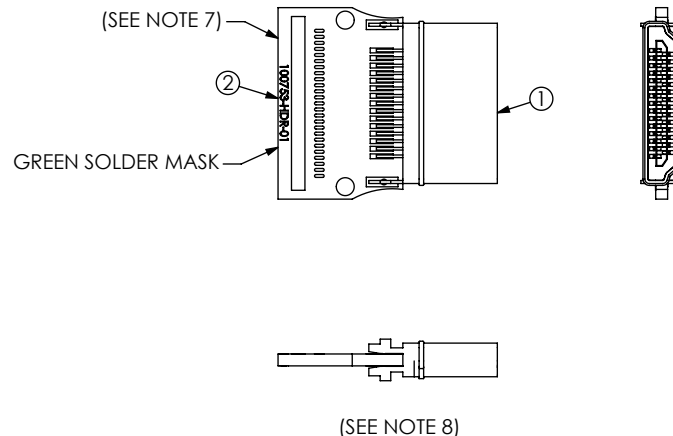
ITEM NO.	PART NUMBER	QUANTITY	MATERIAL
1	ASP-111273-01	1	TERMINAL
2	PCB-100754-HDR-01	1	PCB
3	PT-1-24-01-152	.04167	TUBE
4	TP-38	.08333	PLUG

DETAIL 'A'
SCALE 3 : 1

THIS PRODUCT MANUFACTURED WITH LEAD-FREE PROCESSING

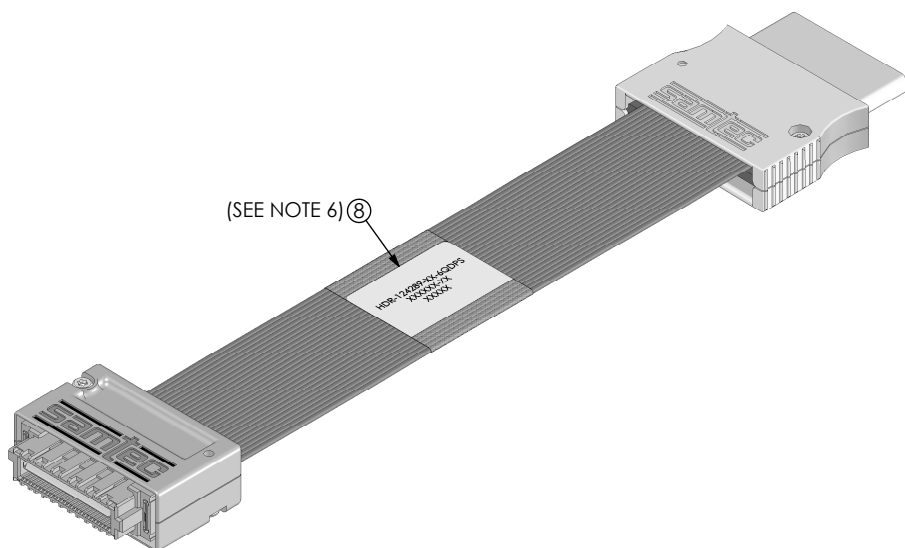
HDR SETUP OPTION:
SUB-XQCD-03-1 BANK
PCB SETUP OPTION:
OPTION 4

J2
SUB-HDR-124289-02




SUB-HDR-124289-02 BOM

ITEM NO.	PART NUMBER	QUANTITY	MATERIAL
1	HDMIP-29-01-S-EM	1	TERMINAL
2	PCB-100753-HDR-01	1	PCB



F:\dwg\hdr\124000\hdr-124289-xx-6qdp\HDR-124289-XX-6QDPS.SLDDRW

<p>PROPRIETARY NOTE THIS DOCUMENT CONTAINS INFORMATION CONFIDENTIAL AND PROPRIETARY TO SAMTEC, INC. AND SHALL NOT BE REPRODUCED OR TRANSFERRED TO OTHER DOCUMENTS OR DISCLOSED TO OTHERS OR USED FOR ANY PURPOSE OTHER THAN THAT WHICH IT WAS OBTAINED WITHOUT THE EXPRESSED WRITTEN CONSENT OF SAMTEC, INC.</p>		
	<p>520 PARK EAST BLVD, NEW ALBANY, IN 47150 PHONE: 812-944-6733 FAX: 812-948-5047 e-Mail info@SAMTEC.com code 55322</p>	
	<p>SHEET SCALE: 1:1</p>	<p>DESCRIPTION: CUSTOM HDR CABLE ASSEMBLY DWG. NO. HDR-124289-XX-6QDPS BY: J.BORGELT 03/15/2006 SHEET 2 OF 2</p>

X-ON Electronics

Largest Supplier of Electrical and Electronic Components

Click to view similar products for [Ribbon Cables / IDC Cables](#) category:

Click to view products by [Samtec](#) manufacturer:

Other Similar products are found below :

[FSK-12A](#) [AWG28-10G](#) [EHJ3C](#) [EHJ4C](#) [cab-LVDV-PWR-10-15](#) [FSP-25A](#) [3365/15 \(100FT\)](#) [cab-LVDV-DAT-34-15](#) [49635-C62-S2](#) [1-3636-600-5204](#) [92315-1408](#) [426171120-3](#) [3625/08 \(100M\)](#) [0044704](#) [2-1589735-3](#) [JSM015PP2DCC23N](#) [92301-0283](#) [ACL-eSSI-2](#) [92301-0718](#) [MMSDT-06-20-S-05.5-D-K-LDX](#) [IDD-04-G](#) [NM-2J2-051-PS1-JJAB](#) [1700/14SF \(100FT\)](#) [1700/26SF \(100FT\)](#) [1700/34SF \(100FT\)](#) [3801/09 \(100FT\)](#) [119-885](#) [DS1057-06A282R-30.5](#) [DS1057-12A282R-30.5](#) [DS1057-14A282R-76.5](#) [DS1057-20A282R-76.5](#) [DS1057-24A282R-76.5](#) [DS1057-26A282R-76.5](#) [DS1057-30A282R-76.5](#) [DS1057-34A282R-76.5](#) [DS1057-40A282R-76.5](#) [DS1057-60A282R-76.5](#) [DS1057-64A282R-76.5](#) [DS1058-08M28-30.5](#) [DS1058-30M28-30.5](#) [3750/10 \(100FT\)](#) [0015712](#) [0015905](#) [S30109](#) [11203](#) [11223](#) [11243](#) [11262](#) [0037147](#) [0022512](#)