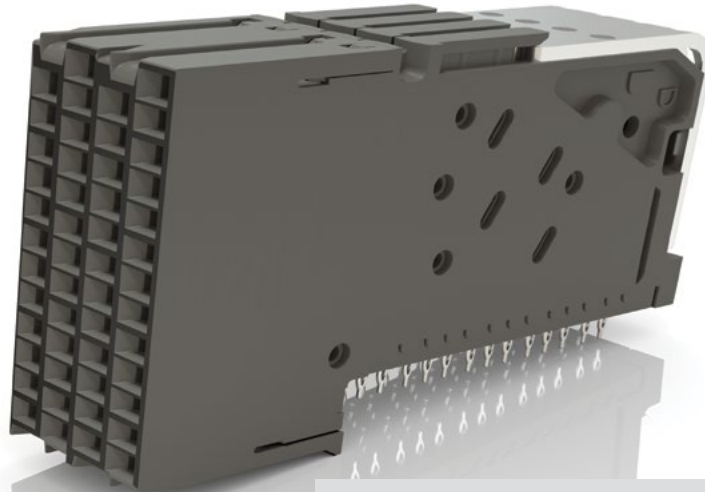


# XCede<sup>®</sup> HD

## HIGH-DENSITY BACKPLANE HEADERS & SOCKETS

(1.80 mm) .071" PITCH

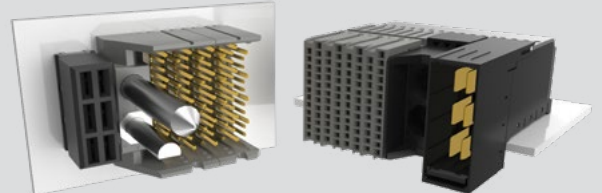
16  
Gbps



### FEATURES & BENEFITS

- Small form factor and modular design provides significant space-savings and flexibility
- High-performance system
- Up to 84 differential pairs per linear inch
- 3, 4 and 6-pair designs on 4, 6 and 8 columns
- Integrated power, guidance, keying and end walls available
- 85  $\Omega$  and 100  $\Omega$  options
- Combine any configuration of modules to create one integrated receptacle (BSP Series); corresponding terminal modules are individually mounted to the backplane
- Press-fit extraction and insertion tool options; please visit [samtec.com/tooling](http://samtec.com/tooling) for details

### MODULAR DESIGN



Signal, Power & Keying / Guidance options can be customized in any configuration

### HIGH-DENSITY, SMALL FORM FACTOR



**XCede<sup>®</sup> HD**  
Up to 84 pairs per linear inch



**Traditional Backplane**  
Up to 76 pairs per linear inch

(Both shown with six 4-pair, 8 column receptacles)

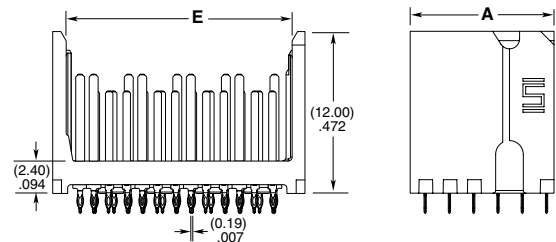
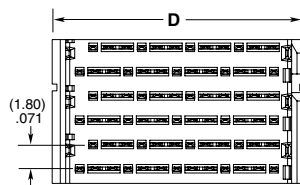
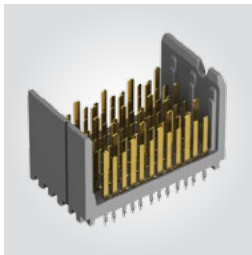
### KEY SPECIFICATIONS

PITCH	INSULATOR MATERIAL	CONTACT MATERIAL	PLATING	OPERATING TEMP RANGE
1.80 mm	LCP	Phosphor Bronze (HDTM Series) Copper Alloy (HDTF & HPTS Series)	Au or Sn over 50 $\mu$ " (1.27 $\mu$ m) Ni	-40 °C to + 105 °C (HDTX Series)

**(1.80 mm) .071" PITCH • HIGH-DENSITY BACKPLANE HEADER**

HDTM	PAIRS	NO. OF COLUMNS	TAIL SIZE	S	VT	SIDE WALLS	GUIDANCE	STAGE COMBO	KEYING
	-3, -4, -6 =Pairs Per Column	-04, -06, -08	-1 =(.4495 mm) .0177" Drill  -2 =(.5511 mm) .0217" Drill			-0 = Open (No Walls)  -1 = Left  -2 = Right  -4 = Left Polarizing with left guidance (-4 Pairs N/A)  -5 = Right Polarizing with right guidance (-4 Pairs N/A)	-4 or -5 Polarizing Only; Leave Blank for No Guidance  -L = Left Side Guide Pin  -R = Right Side Guide Pin	-1 = 3 mm Wipe Signal / 4 mm Wipe Ground  -2 = 2 mm Wipe Signal / 4 mm Wipe Ground  -3 = 3 mm Wipe Signal / 3 mm Wipe Ground  -4 = 2 mm Wipe Signal / 3 mm Wipe Ground  -5 = 2 mm Wipe Signal / 2 mm Wipe Ground	-4 or -5 Polarizing Only; Leave Blank for No Keying  -A thru -H = Position of Flat on Key (See Table)

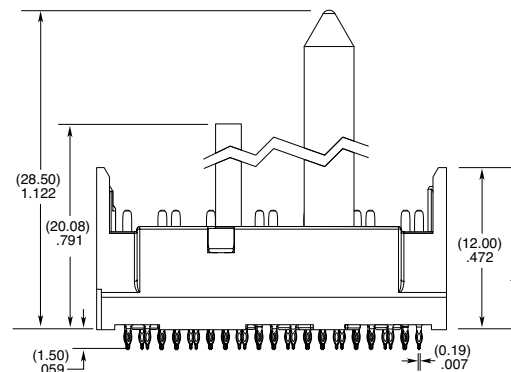
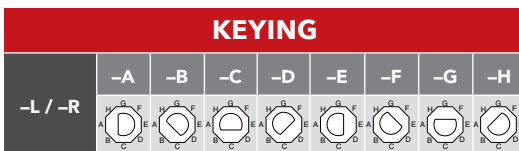
**HDTM Board Mates:**  
HDTF, BSP  
(See HDTF for more information.)



**HDTM-4-06-1-S-VT-0-1 SHOWN**

NO. OF COLUMNS	A			C	
	No Walls	Left Wall	Right Wall	Left Polarize	Right Polarize
-04	(7.06) .278	(8.20) .322	(8.06) .317	N/A	N/A
-06	(10.66) .420	(11.80) .465	(11.66) .459	(17.14) .675	(16.65) .656
-08	(14.26) .561	(15.40) .606	(15.26) .600	(20.74) .817	(20.25) .797

PAIRS PER COLUMN	D	E
	Standard Wall	
-03	(15.10) .594	(13.15) .518
-04	(18.70) .736	(16.75) .659
-06	(25.90) 1.020	(23.95) .943



**HDTM-6-04-X-X-VT-4-L-X-A SHOWN**

View complete specifications at: [samtec.com?HDTM](http://samtec.com?HDTM)

**Notes:**  
Some lengths, styles and options are non-standard, non-returnable.  
XCede® is a registered trademark of Amphenol.

## X-ON Electronics

Largest Supplier of Electrical and Electronic Components

*Click to view similar products for [High Speed/Modular Connectors](#) category:*

*Click to view products by [Samtec](#) manufacturer:*

Other Similar products are found below :

[650827-1](#) [74040-1346](#) [1410191-1](#) [1410337-1](#) [1410368-3](#) [1410367-3](#) [1410971-4](#) [1467833-1](#) [2000877-1](#) [2000878-1](#) [2041314-1](#) [2065387-1](#)  
[2187307-1](#) [163P](#) [1934290-1](#) [2000875-1](#) [2065799-1](#) [2065917-1](#) [2102736-2](#) [FSR-40](#) [2169868-2](#) [22354-8](#) [437-5040-000](#) [039-0246-000](#)  
[0740618502](#) [0761601016](#) [73774-1000](#) [030-2415-003/100 PK](#) [030-7380-004](#) [030-2494-001](#) [532939-1](#) [5532901-3](#) [3-1469268-7](#) [UMK-SE](#)  
[11,25-1](#) [74748-102LF](#) [10041743-101LF](#) [10066670-100002LF](#) [1-533915-1](#) [249-4515-000](#) [7-1469373-3](#) [DL2-2J/S](#) [2000713-8](#) [2000713-7](#)  
[10124313-101LF](#) [1410189-2](#) [3011-21](#) [EBTF-4-10-2.0-S-RA-1](#) [430305-001](#) [4395800100](#) [8140115](#)