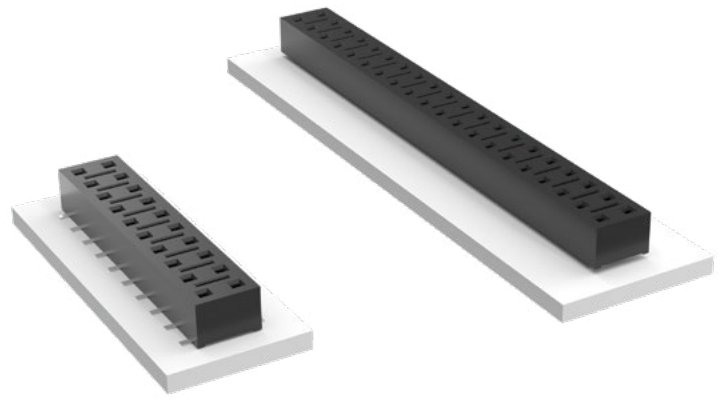


COST-EFFECTIVE RELIABLE SOCKET

(2.54 mm) .100" PITCH • HLE SERIES



HLE
Board Mates:
TSW, MTSW, DW, EW,
ZW, TLW, TSM, MTLW, HW



02 thru 50

-F
= Gold flash on contact,
Matte Tin on tail

-L
= 10 μ" (0.25 μm)
Gold on contact,
Matte Tin on tail

Leave blank for
Surface Mount
(Requires -BE for
Bottom Entry)

-TE
= Through-hole
Top Entry

-PE
= Through-hole
Pass-through
Entry
(Requires -BE for
Bottom Entry)

-BE
= Bottom Entry
(Not available
with -TE)

-A
= Alignment Pin
(4 positions min.)
Metal or plastic at
Samtec discretion
(Not available with
-TE, -PE & -LC)

-LC
= Locking Clip
(2 positions min.)
(Not available with -A)
(Manual placement
required)

-K
= (6.50 mm)
.256" DIA
Polyimide Film
Pick & Place Pad
(3 positions min.)
Not available
with -TE or
-PE tail option

-P
= Metal Pick
& Place Pad
(3 positions min.)

-TR
= Tape & Reel
(29 positions max.)

-FR
= Full Reel
Tape & Reel
(must order max.
quantity per reel;
contact Samtec for
quantity breaks)

SPECIFICATIONS

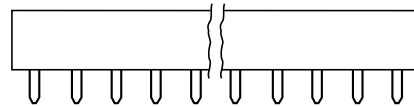
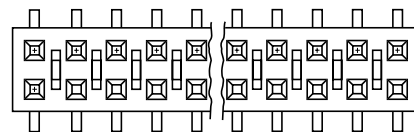
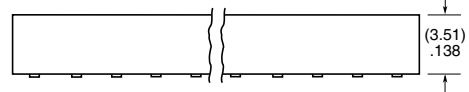
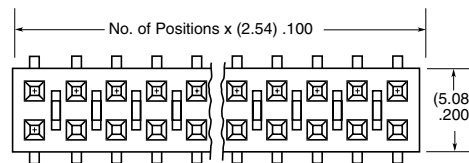
Insulator Material:
Black Liquid Crystal Polymer
Contact Material:
BeCu
Plating:
Au or Sn over
50 μ" (1.27 μm) Ni
Current Rating (HLE/TSM):
4.1 A per pin
(2 pins powered)
Voltage Rating:
400 VAC
Operating Temp Range:
-55 °C to +125 °C
Insertion Depth:
(1.78 mm) .070" to
(3.43 mm) .135" pass-through,
or (2.59 mm) .102" min
plus board thickness for
bottom entry

PROCESSING

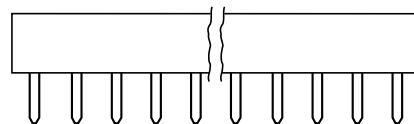
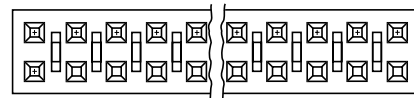
Lead-Free Solderable:
Yes
SMT Lead Coplanarity:
(0.10 mm) .004" max (02-20)
(0.15 mm) .006" max (21-50)*
*(.004" stencil solution
may be available; contact
IPG@samtec.com)

ALSO AVAILABLE

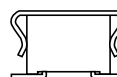
Other Platings
(MOQ Required)



-PE



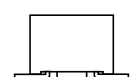
-TE



-P



-LC



-A

Note:
Some lengths, styles and
options are non-standard,
non-returnable.

X-ON Electronics

Largest Supplier of Electrical and Electronic Components

Click to view similar products for [Board to Board & Mezzanine Connectors](#) category:

Click to view products by [Samtec](#) manufacturer:

Other Similar products are found below :

[589158040000018](#) [MDF7C-18P-2.54DSA\(55\)](#) [FCN-230C068-11](#) [FCN-268F012-G/BD](#) [FCN-268F036-G/BD](#) [FCN-268M012-G/0D](#) [FCN-268M024-G/1D](#) [FCN-723J004/1](#) [MIS-048-01-F-D-DP-K](#) [832-10-034-10-001000](#) [FX4C-80S-1.27DSA](#) [FCN-214Q030-G/0](#) [FCN-234P048-G/0](#) [FCN-235D050-G/C](#) [210-93-314-41-105000](#) [2-22603-0](#) [MDF7-40DP-2.54DSA\(55\)](#) [AXG720047](#) [5031084030](#) [MIT-114-03-F-D-K](#) [55323-1519](#) [DF33-2P-3.3DSA\(24\)](#) [YFT-20-05-H-03-SB-K](#) [503308-3040](#) [026-6203-PDB](#) [027-6203-PDB](#) [069159702701000](#) [10123981-102LF](#) [101A10019X](#) [55650-0588-C](#) [68682-310LF](#) [68684-306](#) [75140-7012](#) [87471-650](#) [YTW-30-07-H-Q-410-140](#) [194261-1](#) [FCN-268F024-G0D](#) [10124054-515LF](#) [68685-603](#) [8-1616154-3](#) [MIS-019-01-F-D](#) [FCN-268M024-G/3D](#) [20021832-06016C1LF](#) [KX15-20KLDL-E1000E](#) [MDF7-16DP-2.54DSA\(55\)](#) [AXE810124](#) [FCN-214J100-G/0](#) [FCN-230C068-E/S](#) [AXE812124](#) [AXE816124](#)