

DO NOT SCALE FROM THIS PRINT

UNLESS OTHERWISE NOTED

DIMENSIONS ARE IN INCHES TOLERANCES ARE:

ONE PLACE DECIMALS ± .1 [2.5] THREE PLACE DECIMALS ± .005 [.13] ANGLES ± 2°  
 TWO PLACE DECIMALS ± .01 [25] FOUR PLACE DECIMALS ± .0020 [0.051]

TITLE: ASSEMBLY, .025 [64] SQ. POST  
 HI-TEMP  
 TERMINAL STRIP

DWG NO: HMTSW-XXX-XX-XXX-X-XXXX-XX-XX  
 SHEET 1 OF 2

TABLE 1  
TERMINAL SPECIFICATIONS

| TERMINAL SPEC | PIN #1         | PIN #1 OAL    | PIN #2         | PIN #2 OAL    | PIN #3         | PIN #3 OAL    |
|---------------|----------------|---------------|----------------|---------------|----------------|---------------|
| -05           | T-1S6-21-XXX-2 | .335 [8.51]   | N/A            | N/A           | N/A            | N/A           |
| -06           | T-1S6-18-XXX-2 | .300 [7.62]   | N/A            | N/A           | N/A            | N/A           |
| -07           | T-1S6-07-XXX-2 | .430 [10.92]  | T-1S6-15-XXX-2 | .630 [16.00]  | T-1S6-10-XXX-2 | .830 [21.08]  |
| -08           | T-1S6-08-XXX-2 | .530 [13.46]  | T-1S6-09-XXX-2 | .730 [18.54]  | T-1S6-11-XXX-2 | .930 [23.62]  |
| -09           | T-1S6-09-XXX-2 | .730 [18.54]  | T-1S6-11-XXX-2 | .930 [23.62]  | T-1S6-20-XXX-2 | 1.130 [28.70] |
| -10           | T-1S6-10-XXX-2 | .830 [21.08]  | T-1S6-12-XXX-2 | 1.030 [26.16] | T-1S6-13-XXX-2 | 1.230 [31.24] |
| -11           | T-1S6-11-XXX-2 | .930 [23.62]  | T-1S6-20-XXX-2 | 1.130 [28.70] | T-1S6-19-XXX-2 | 1.330 [33.78] |
| -12           | T-1S6-12-XXX-2 | 1.030 [26.16] | T-1S6-13-XXX-2 | 1.230 [31.24] | T-1S6-14-XXX-2 | 1.430 [36.23] |
| -13           | T-1S6-13-XXX-2 | 1.230 [31.24] | T-1S6-14-XXX-2 | 1.430 [36.23] | N/A            | N/A           |
| -21           | T-1S6-14-XXX-2 | 1.430 [36.23] | N/A            | N/A           | N/A            | N/A           |
| -22           | T-1S6-15-XXX-2 | .630 [16.00]  | T-1S6-10-XXX-2 | .830 [21.08]  | T-1S6-12-XXX-2 | 1.030 [26.16] |
| -23           | T-1S6-16-XXX-2 | .445 [11.30]  | N/A            | N/A           | N/A            | N/A           |
| -24           | T-1S6-17-XXX-2 | .480 [12.19]  | N/A            | N/A           | N/A            | N/A           |
| -27           | T-1S6-19-XXX-2 | 1.330 [33.78] | N/A            | 1.330 [33.78] | N/A            | N/A           |
| -28           | T-1S6-20-XXX-2 | 1.130 [28.70] | T-1S6-19-XXX-2 | N/A           | N/A            | N/A           |

- NOTES:
1. TERMINAL PUSHOUT FORCE: 3 LBS. MIN.
  2. HEIGHT VARIATION BETWEEN ANY TWO ROWS SHALL BE .005 [.13] MAX (R.A. TAIL N/A).
  3. ASSEMBLE GOLD PLATE END AS SHOWN.
  4. (C) REPRESENTS CRITICAL DIMENSION FOR STATISTICAL PROCESS CONTROL.
  5. TOW & SWAY SPEC. OF 2' APPLIES TO ALL POSITIONS, POST & TAIL, IN ALL DIRECTIONS.
  6. NOTE DELETED
  7. MAXIMUM CUT FLASH: .010 [25].
  8. INSULATOR MATERIAL: NATURAL LCP, UL 94 V0

ASSEMBLY INSTRUCTIONS

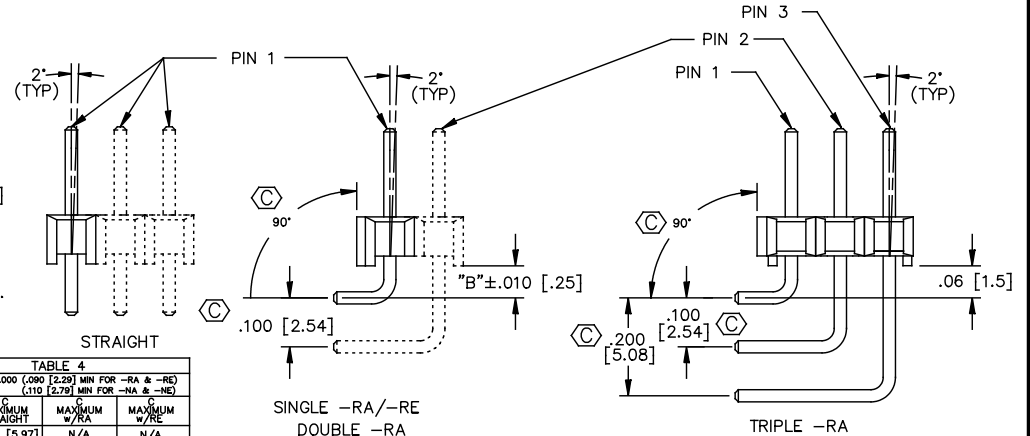
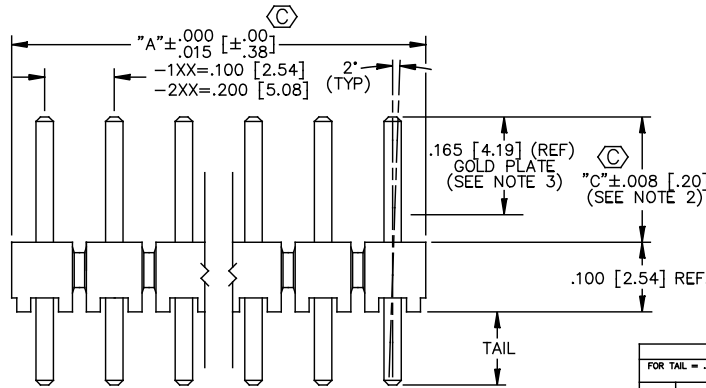


TABLE 4  
FOR TAIL = .000 [0.00] MIN FOR -RA & -RE  
(.110 [2.79] MIN FOR -NA & -NE)

| LEAD STYLE | MAXIMUM STRAIGHT | MAXIMUM W/RA  | MAXIMUM W/RE  |
|------------|------------------|---------------|---------------|
| -05        | .235 [5.97]      | N/A           | N/A           |
| -06        | .200 [5.08]      | N/A           | N/A           |
| -07        | .330 [8.38]      | .130 [3.30]   | N/A           |
| -08        | .430 [10.92]     | .230 [5.84]   | .130 [3.30]   |
| -09        | .630 [16.00]     | .430 [10.92]  | .330 [8.38]   |
| -10        | .730 [18.54]     | .530 [13.46]  | .430 [10.92]  |
| -11        | .830 [21.08]     | .630 [16.00]  | .530 [13.46]  |
| -12        | .930 [23.62]     | .730 [18.54]  | .630 [16.00]  |
| -13        | 1.130 [28.70]    | .930 [23.62]  | .830 [21.08]  |
| -21        | 1.330 [33.78]    | 1.130 [28.70] | 1.030 [26.16] |
| -22        | .530 [13.46]     | .330 [8.38]   | .230 [5.84]   |
| -23        | .345 [8.76]      | .145 [3.68]   | N/A           |
| -24        | .380 [9.65]      | .180 [4.57]   | N/A           |
| -27        | 1.230 [31.24]    | 1.030 [26.16] | .930 [23.62]  |
| -28        | 1.030 [26.16]    | .830 [21.08]  | .730 [18.54]  |

| BODY SPECIFICATION |                  | TABLE 3 |             |
|--------------------|------------------|---------|-------------|
| ROW/OPTION         | USE BODY         | -XX     | "B"         |
| -S/-S-NA/-S-NE     | HTSW-50-S-LCP    | -RA     | .060 [1.52] |
| -S-RA/-S-RE        | HTSW-50-S-RA-LCP | -RE     | .160 [4.06] |
| -D/-D-NA/-D-NE     | HTSW-50-D-LCP    |         |             |
| -D-RA              | HTSW-50-D-RA-LCP |         |             |
| -T/-T-NA/-T-NE     | HTSW-50-T-LCP    |         |             |
| -T-RA              | HTSW-50-TRA-LCP  |         |             |
| -Q                 | HTSW-50-T-LCP    |         |             |

HMTSW-XXX-XX-XXX-X-XXXX-XX-XX

**TERMINAL SPACE SPEC.**  
(SEE ASSEMBLY INSTR.)  
 -1= .100 [2.54] (FILL EVERY POS.)  
 -2= .200 [5.08] (FILL E/O POS. STARTING W/ 1st & ENDING W/ LAST POS. IN BODY)

**BODY LENGTH SPEC.**  
 EXPRESSED IN # OF POS.  
 -1: 01 THRU 50 (-S,-D,-T,-T-RA)  
 01 THRU 50 (-S,-RE,-S-RA,-D-RA)  
 \*A\* = NO. OF POS. x .100 [2.54]  
 -2: 02 THRU 25 (-S,-D,-T,-T-RA)  
 02 THRU 25 (-S,-RE,-S-RA,-D-RA)  
 \*A\* = (NO OF POS. x .200 [5.08])-.100 [2.54]

**TERMINAL SPECIFICATION**  
 SEE TABLE 1

**PLATING SPECIFICATIONS**  
 -G: 10µ" GOLD IN CONTACT AREA, 3 µ" GOLD ON TAIL  
 -T: MATTE TIN CONTACT AND TAIL  
 -S: 30µ" SELECTIVE GOLD IN CONTACT AREA, MATTE TIN ON TAIL  
 -H: 30µ" GOLD IN CONTACT AREA, 3µ" GOLD ON TAIL  
 -L: 10µ" SELECTIVE GOLD IN CONTACT AREA, MATTE TIN ON TAIL  
 -F: 3µ" SELECTIVE GOLD IN CONTACT AREA, MATTE TIN ON TAIL  
 -E: 50µ" GOLD IN CONTACT AREA, 3µ" GOLD ON TAIL (ONLY AVAILABLE ON TERMINAL SPECIFICATIONS -07, -08, -09, -13, -14, NOT AVAILABLE ON -RA, -RE, -NA, -NE, -LA)  
 -TL: TIN/LEAD (90/10+/-5%) CONTACT AND TAIL (AVAILABLE ONLY ON LEAD STYLES -07, -08, & -09)  
 -TM: MATTE TIN CONTACT AND TAIL  
 -SM: 30µ" SELECTIVE GOLD IN CONTACT AREA, MATTE TIN ON TAIL  
 -LM: 10 µ" SELECTIVE GOLD IN CONTACT AREA, MATTE TIN ON TAIL  
 -FM: 3 µ" SELECTIVE GOLD IN CONTACT AREA, MATTE TIN ON TAIL  
 -STL: 30 µ" SELECTIVE GOLD IN CONTACT AREA, TIN LEAD (90/10+/-5%) TAIL

**OPTION #2**  
 -POLARIZATION SPEC.  
 XXX INDICATES POS. TO BE OMITTED (SEE FIG. 2)

**OPTION #1**  
 -BLANK= STRAIGHT  
 -RA= RIGHT ANGLE (SEE TABLE 3 & FIG. 3)  
 -RE= EXTENDED RIGHT ANGLE (SEE TABLE 3 & FIG. 3) (SINGLE ROW ONLY) (-07, -23, -24 N/A)  
 -NA= RA OPTION WITH STRAIGHT OPTION BODY  
 -NE= RE OPTION WITH STRAIGHT OPTION BODY  
 -LC= LOCKING CLIP (USE LTC-01 FOR SGL. ROW & LTC-02 FOR DBL. ROW)  
 -LL= LOCKING LEAD (SEE FIG. 1)  
 (N/A WITH -RE OPTION OR SINGLE ROW 1 OR 2 POSITION)  
 (TAILS FROM .090 [2.29] TO .400 [10.16] ONLY)  
 (N/A IN SINGLE ROW, 1 & 2 POSITIONS)  
 -LA= -RA OPTION WITH -LL OPTION (SEE FIG. 2 & 3) (N/A WITH OR SINGLE ROW 1 OR 2 POSITION)  
 (TAILS FROM .090 [2.29] TO .310 [7.87] ONLY)  
 POST = .530 [13.46] MAX.

**POST HEIGHT**  
 XXXX = "C" (SEE TABLE 4)

**ROW SPECIFICATION (SEE TABLE #2)**  
 -S: SINGLE  
 -D: DOUBLE  
 -T: TRIPLE  
 -Q: TRIPLE ROW(FILL OUTER TWO ROWS)

**PROPRIETARY NOTE**  
 THIS DOCUMENT CONTAINS CONFIDENTIAL AND PROPRIETARY INFORMATION AND ALL DESIGN, MANUFACTURING, REPRODUCTION, USE, PATENT RIGHTS AND SALES RIGHTS ARE EXPRESSLY RESERVED BY SAMTEC, INC. THIS DOCUMENT SHALL NOT BE DISCLOSED, IN WHOLE OR PART, TO ANY UNAUTHORIZED PERSON OR ENTITY NOR REPRODUCED, TRANSMITTED OR INCORPORATED IN ANY OTHER PRODUCT IN ANY MANNER WITHOUT THE EXPRESS WRITTEN CONSENT OF SAMTEC, INC.

EXISPROD\ASSEMBLY\100  
HMTSW-AM

**samtec**

520 PARK EAST BLVD. NEW ALBANY, INDIANA 47150  
 PHONE (812) 944-6733 P.O. BOX 1147  
 CODE 55322

MADE BY: JORDAN 3-25-87 HMTSW-XXX-XX-XXX-X-XXXX-XX-XX  
 SHEET 1 OF 2

## X-ON Electronics

Largest Supplier of Electrical and Electronic Components

*Click to view similar products for [Headers & Wire Housings](#) category:*

*Click to view products by [Samtec](#) manufacturer:*

Other Similar products are found below :

[95000-104TRLF](#) [10135584-644402LF](#) [DF62W-EP2022PCA](#) [95000-106TRLF](#) [DF62W-2022SCA](#) [DF62W-EP2022PC](#) [2203348](#) [DF62W-2022SC](#) [1084018](#) [1029039](#) [1084017](#) [802-10-012-10-002000](#) [1112640](#) [1112639](#) [891-007-9SS-BST1T](#) [000-34000](#) [0008550134](#) [0009482033](#) [0009507031](#) [57102-F02-18ULF](#) [57102-S06-03LF](#) [57202-S52-04LF](#) [PCN6-15S-2.5E](#) [0039019024](#) [58102-G61-06LF](#) [582553-1](#) [0009485154](#) [0009508121](#) [009176003701906](#) [0022285053](#) [0050291907](#) [018731A](#) [LY20-4P-DT1-P1E-BR](#) [02.125.8002.8](#) [60101931](#) [60598-1 \(Cut Strip\)](#) [M1625-3R/100](#) [61062-3](#) [61082-181009](#) [CSU011177004](#) [636-1427](#) [638009-1](#) [641938-9](#) [641991-4](#) [644168-1](#) [644827-2](#) [647662-1](#) [65039-019ELF](#) [65692-001LF](#) [65781-018](#)