

HIGH-SPEED EDGE CARD SYSTEMS

0.60 mm, 0.80 mm and 1.00 mm PITCH



FEATURES & BENEFITS

- 56 Gbps PAM4 performance
- PCI Express® 3.0, 4.0 and 5.0
- Edge Rate® contacts optimized for signal integrity performance and cycle life
- Up to 200 positions available
- Vertical, right-angle, edge mount, pass-through orientations
- Power/signal combo, press-fit tails, rugged weld tabs, locks and latches
- Mating cable assemblies available



Rugged tucked beam technology (HTEC8)



Differential pair for increased speed (HSEC8-DP)



Custom designs allow for misalignment in the X-Y axes (HSEC1)

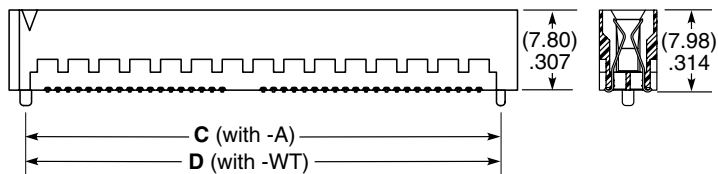
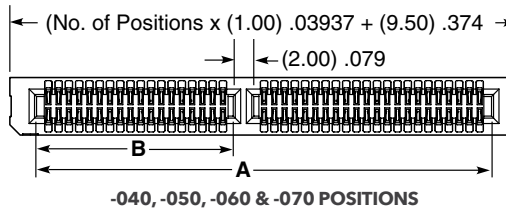
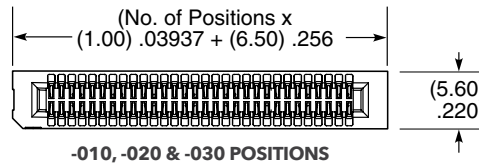
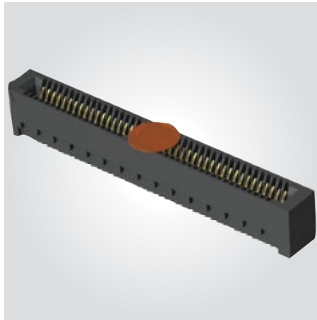
KEY SPECIFICATIONS

SERIES	PITCH	TOTAL POSITIONS	INSULATOR MATERIAL	CONTACT MATERIAL	OPERATING TEMP RANGE	CURRENT RATING	VOLTAGE RATING	LEAD-FREE SOLDERABLE
HSEC6	0.60 mm	56-168	Black LCP	Copper Alloy	-55 °C to +125 °C	0.8 A (12 pins)	300 VAC	Yes
HTEC8	0.80 mm	40-200	Black LCP	Copper Alloy	-55 °C to +125 °C	3.0 A (2 pins)	215 VAC	Yes
HSEC8	0.80 mm	18-200	Black LCP	BeCu	-55 °C to +125 °C	2.8 A (2 pins)	240 VAC	Yes
HSEC1	1.00 mm	20-140	Black LCP	Phosphor Bronze	-55 °C to +125 °C	2.2 A (2 pins)	215 VAC	Yes

1.00 mm (.0394") PITCH • VERTICAL HIGH-SPEED EDGE CARD

HSEC1	POSITIONS PER ROW	CARD THICKNESS	PLATING OPTION	DV	OPTION	OTHER OPTIONS
	-010, -020, -030, -040, -050, -060, -070	-01 =(1.60 mm) .062" thick card	-L = 10 μ" (0.25 μm) Gold on contact area, Matte Tin on tail -S = 30 μ" (0.76 μm) Gold on contact area, Matte Tin on tail		-A or -WT required in callout -A =Alignment Pin (Not available with -WT) -WT =Weld tab (Not available with -A)	-K =(7.01 mm) .276" DIA Polyimide Film Pick & Place Pad -TR =Tape & Reel (Required for 10-60 positions) -FR = Full Reel Tape & Reel (must order max. quantity per reel; contact Samtec for quantity breaks) (Required for 10-60 positions)

HSEC1-DV
Card Mates:
(1.60 mm) .062"
thick card



POSITIONS PER ROW	A	B	C (with -A)	D (with -WT)
-010	(11.30) .445	N/A	(13.25) .522	(14.50) .571
-020	(21.30) .839	N/A	(23.25) .915	(24.50) .965
-030	(31.30) 1.232	N/A	(33.25) 1.309	(34.50) 1.358
-040	(44.30) 1.744	(19.15) .754	(46.25) 1.821	(47.50) 1.870
-050	(54.30) 2.138	(24.15) .951	(56.25) 2.215	(57.50) 2.264
-060	(64.30) 2.531	(29.15) 1.148	(66.25) 2.608	(67.50) 2.657
-070	(74.30) 2.925	(34.15) 1.344	(76.25) 3.002	(77.50) 3.051

Note:
Some sizes, styles and
options are non-standard,
non-returnable.

View complete specifications at: samtec.com?HSEC1-DV

X-ON Electronics

Largest Supplier of Electrical and Electronic Components

Click to view similar products for [Standard Card Edge Connectors](#) category:

Click to view products by [Samtec](#) manufacturer:

Other Similar products are found below :

[CR7E-30DB-3.96E\(72\)](#) [6364499-1](#) [6565204-6](#) [PKC-156](#) [1437274-4](#) [147889-1](#) [1489165-4](#) [EBT15622B2X](#) [1-582587-1](#) [284-0102-12100](#)
[286-0052-12101A](#) [306022901000000](#) [307-012-502-202](#) [307-056-520-300](#) [2129318-1](#) [245-062-520-350](#) [287-0032-12101](#) [306-028-525-102](#)
[307-072-526-202](#) [345-060-559-303](#) [392-008-559-201](#) [534671-1](#) [341-240-317](#) [345-044-500-300](#) [346-240-318](#) [395-100-524-300](#) [09-07-2032](#)
[10035388-802LF](#) [10115859-011LF](#) [10122859-009LF](#) [10127905-B04B24BLF](#) [530555-1](#) [5-678046-1](#) [73726-0005](#) [66308-1](#) [1-1437275-6](#)
[PEC-07-02-T-S-A](#) [346-014-520-801](#) [307-048-502-202](#) [CE100F22-9-C](#) [CE100F26-7-C](#) [CE100F28-3-D](#) [CE156F18-9-C](#) [CE156F22-5-D](#)
[CE156F22-9-C](#) [CT100F22-2-D](#) [CT100F22-3-D](#) [CT100F24-2-D](#) [CT100F24-3-D](#) [CT100F24-6-C](#)