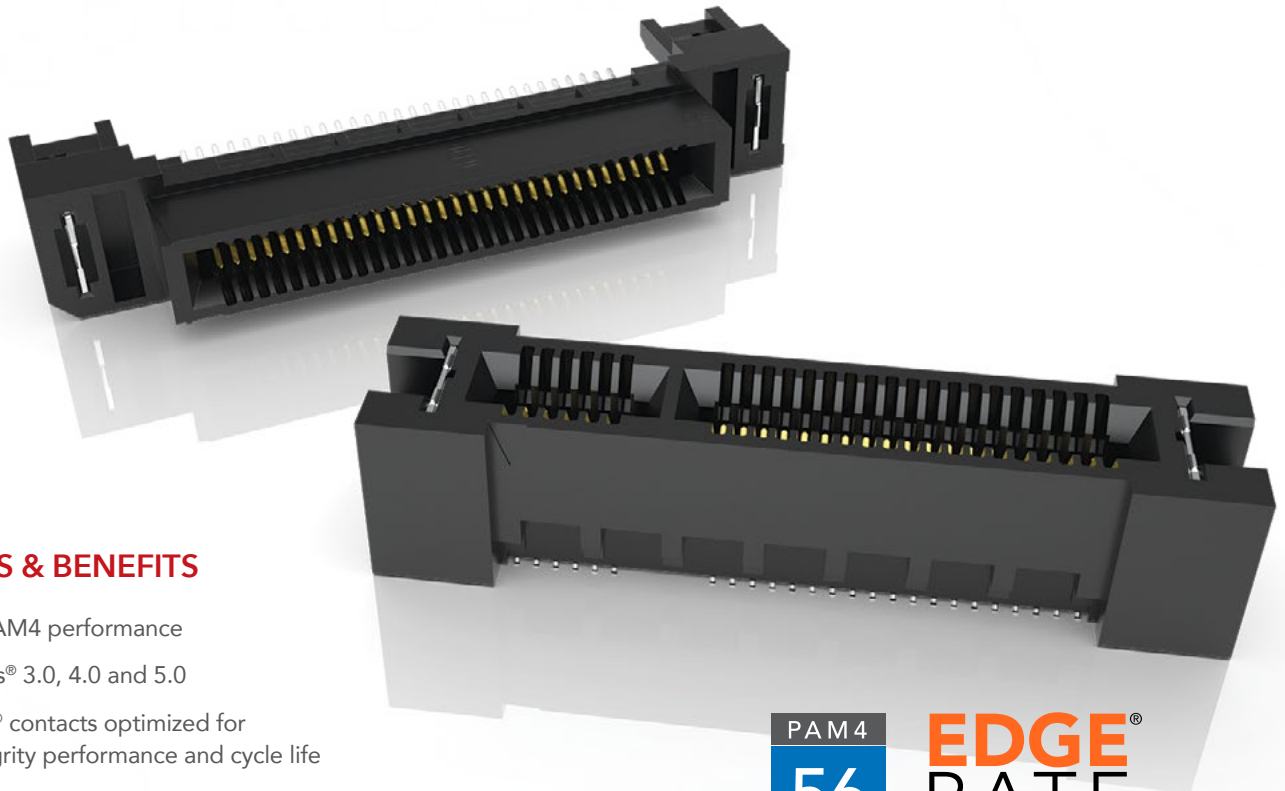


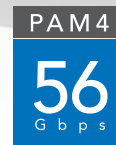
HIGH-SPEED EDGE CARD SYSTEMS

0.60 mm, 0.80 mm and 1.00 mm PITCH



FEATURES & BENEFITS

- 56 Gbps PAM4 performance
- PCI Express® 3.0, 4.0 and 5.0
- Edge Rate® contacts optimized for signal integrity performance and cycle life
- Up to 200 positions available
- Vertical, right-angle, edge mount, pass-through orientations
- Power/signal combo, press-fit tails, rugged weld tabs, locks and latches
- Mating cable assemblies available



Rugged tucked beam technology (HTEC8)



Differential pair for increased speed (HSEC8-DP)



Custom designs allow for misalignment in the X-Y axes (HSEC1)

KEY SPECIFICATIONS

| SERIES | PITCH | TOTAL POSITIONS | INSULATOR MATERIAL | CONTACT MATERIAL | OPERATING TEMP RANGE | CURRENT RATING | VOLTAGE RATING | LEAD-FREE SOLDERABLE |
|--------|---------|-----------------|--------------------|------------------|----------------------|-----------------|----------------|----------------------|
| HSEC6 | 0.60 mm | 56-168 | Black LCP | Copper Alloy | -55 °C to +125 °C | 0.8 A (12 pins) | 300 VAC | Yes |
| HTEC8 | 0.80 mm | 40-200 | Black LCP | Copper Alloy | -55 °C to +125 °C | 3.0 A (2 pins) | 215 VAC | Yes |
| HSEC8 | 0.80 mm | 18-200 | Black LCP | BeCu | -55 °C to +125 °C | 2.8 A (2 pins) | 240 VAC | Yes |
| HSEC1 | 1.00 mm | 20-140 | Black LCP | Phosphor Bronze | -55 °C to +125 °C | 2.2 A (2 pins) | 215 VAC | Yes |

(0.80 mm) .0315" PITCH • VERTICAL EDGE CARD SOCKET

| | | | | | | | |
|--------------|------------|--------------------------|-----------------------|-----------------------|-----------|----------|----------------------|
| HSEC8 | - 1 | POSITIONS PER ROW | CARD THICKNESS | PLATING OPTION | DV | A | OTHER OPTIONS |
|--------------|------------|--------------------------|-----------------------|-----------------------|-----------|----------|----------------------|

09, 10, 13, 20, 25, 30, 37, 40, 49, 50, 60, 70, 80, 100
(13, 25, 49 only available with -L or -L2 option; 09 only available with -L2 option; 37 only available with -L option)

-01
= (1.60 mm) .062" thick card

-03
= (2.36 mm) .093" thick card

-L
= 10 μ" (0.25 μm) Gold on contact area, Matte Tin on tail

-S
= 30 μ" (0.76 μm) Gold on contact area, Matte Tin on tail

-K
= Polyimide Pick & Place Pad

-BL
= Board Locks; -01 card only (Weld tab standard)

-L
= Latching Option; -01 card only (13, 25, 37, 49 only) (Weld tab standard)

-L2
= ECDP Latching; -01 card only (09, 13, 25, 49 only) (For use with ECDP) (Weld tab standard)

-WT
= Weld tab

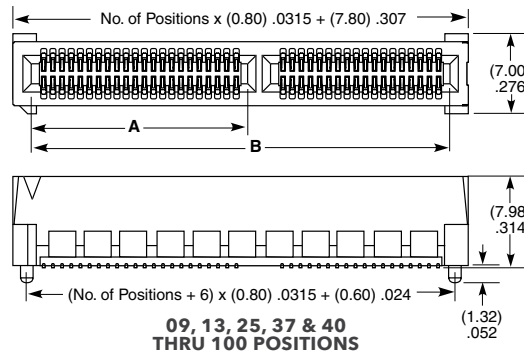
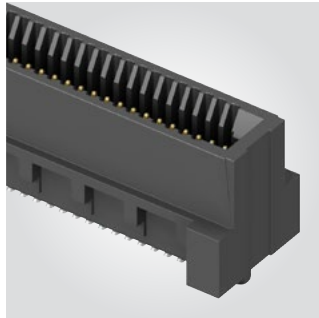
-TR
= Tape & Reel (09 - 70 only)

-FR
= Full Reel Tape & Reel (must order max. quantities per reel; contact Samtec for quantity breaks) (09-70 only)

HSEC8-DV

Card Mates:
(1.60 mm) .062" card
(2.36 mm) .093" card
HSC8

Cable Mates:
ECDP



OTHER SOLUTIONS

For complete edge card system with cards and sockets, visit samtec.com?RU8.

For a card to mate with an HSEC8 socket, visit samtec.com?HSC8



| POSITIONS PER ROW | A | B | CABLE | CONNECTOR |
|-------------------|---------------|---------------|---------|--------------|
| 09*† | (4.50) .177 | (11.80) .465 | ECDP-04 | HSEC8-109-L2 |
| 13*† | (6.10) .240 | (15.00) .591 | ECDP-08 | HSEC8-113-L2 |
| 25*† | (6.10) .240 | (24.60) .969 | ECDP-16 | HSEC8-125-L2 |
| 37† | (18.10) .713 | (34.20) 1.346 | ECDP-32 | HSEC8-149-L2 |
| 40 | (18.90) .744 | (36.60) 1.441 | | |
| 49*† | (22.90) .902 | (43.80) 1.724 | | |
| 50 | (22.90) .902 | (44.60) 1.756 | | |
| 60 | (26.90) 1.059 | (52.60) 2.071 | | |
| 70† | (26.90) 1.059 | (60.60) 2.386 | | |
| 80† | (26.90) 1.059 | (68.60) 2.701 | | |
| 100† | (26.90) 1.059 | (84.60) 3.331 | | |

Positions where no dimensions are given do not have keying feature.

* Mates with ECDP Series
† Available with -01 Card Only

Note:
Some sizes, styles and options are non-standard, non-returnable.

View complete specifications at: samtec.com?HSEC8-DV

X-ON Electronics

Largest Supplier of Electrical and Electronic Components

Click to view similar products for [Standard Card Edge Connectors](#) category:

Click to view products by [Samtec](#) manufacturer:

Other Similar products are found below :

[CR7E-30DB-3.96E\(72\)](#) [6364499-1](#) [6565204-6](#) [PKC-156](#) [1437274-4](#) [147889-1](#) [1489165-4](#) [EBT15622B2X](#) [1-582587-1](#) [284-0102-12100](#)
[286-0052-12101A](#) [306022901000000](#) [307-012-502-202](#) [307-056-520-300](#) [2129318-1](#) [245-062-520-350](#) [287-0032-12101](#) [306-028-525-102](#)
[307-072-526-202](#) [345-060-559-303](#) [392-008-559-201](#) [534671-1](#) [341-240-317](#) [345-044-500-300](#) [346-240-318](#) [395-100-524-300](#) [09-07-2032](#)
[10035388-802LF](#) [10115859-011LF](#) [10122859-009LF](#) [10127905-B04B24BLF](#) [530555-1](#) [5-678046-1](#) [73726-0005](#) [66308-1](#) [1-1437275-6](#)
[PEC-07-02-T-S-A](#) [346-014-520-801](#) [307-048-502-202](#) [CE100F22-9-C](#) [CE100F26-7-C](#) [CE100F28-3-D](#) [CE156F18-9-C](#) [CE156F22-5-D](#)
[CE156F22-9-C](#) [CT100F22-2-D](#) [CT100F22-3-D](#) [CT100F24-2-D](#) [CT100F24-3-D](#) [CT100F24-6-C](#)