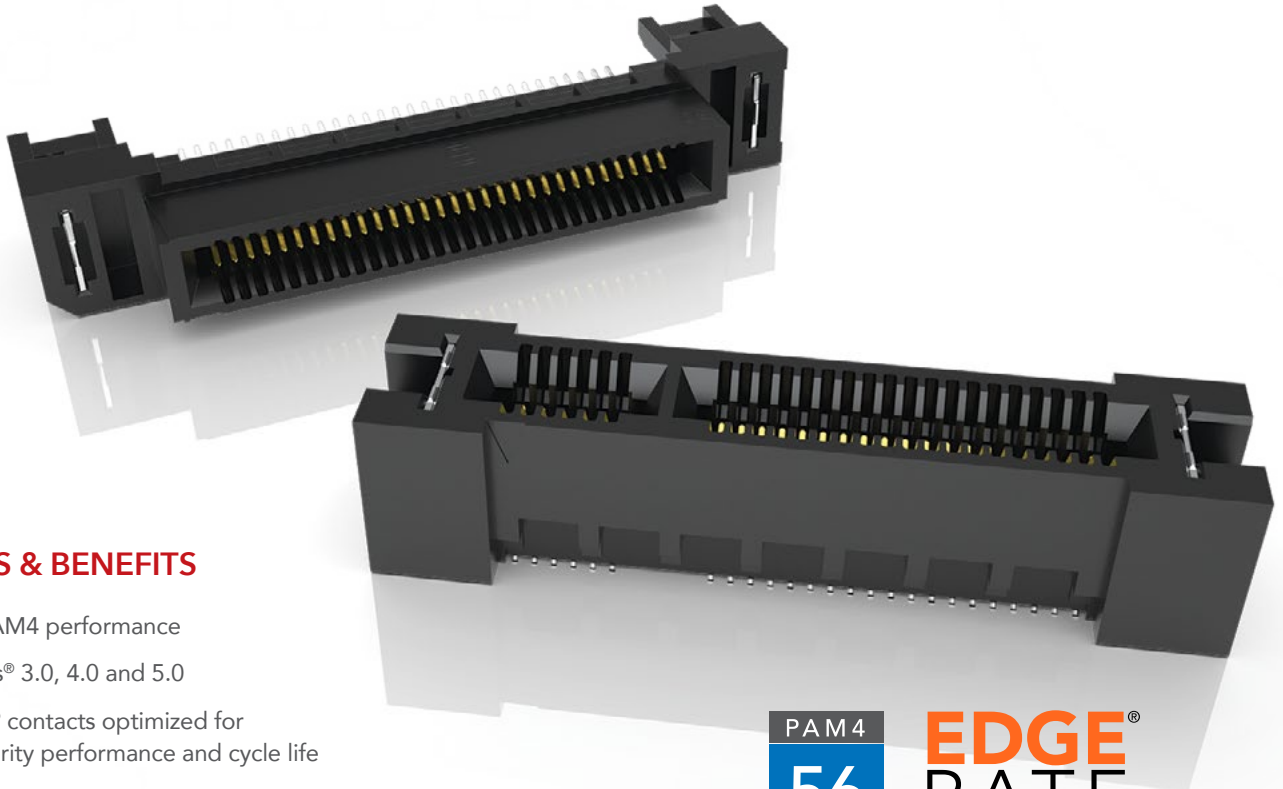


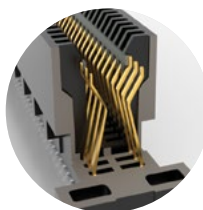
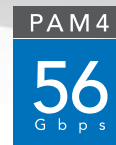
# HIGH-SPEED EDGE CARD SYSTEMS

0.60 mm, 0.80 mm and 1.00 mm PITCH



## FEATURES & BENEFITS

- 56 Gbps PAM4 performance
- PCI Express® 3.0, 4.0 and 5.0
- Edge Rate® contacts optimized for signal integrity performance and cycle life
- Up to 200 positions available
- Vertical, right-angle, edge mount, pass-through orientations
- Power/signal combo, press-fit tails, rugged weld tabs, locks and latches
- Mating cable assemblies available



Rugged tucked beam technology (HTEC8)



Differential pair for increased speed (HSEC8-DP)



Custom designs allow for misalignment in the X-Y axes (HSEC1)

## KEY SPECIFICATIONS

| SERIES | PITCH   | TOTAL POSITIONS | INSULATOR MATERIAL | CONTACT MATERIAL | OPERATING TEMP RANGE | CURRENT RATING  | VOLTAGE RATING | LEAD-FREE SOLDERABLE |
|--------|---------|-----------------|--------------------|------------------|----------------------|-----------------|----------------|----------------------|
| HSEC6  | 0.60 mm | 56-168          | Black LCP          | Copper Alloy     | -55 °C to +125 °C    | 0.8 A (12 pins) | 300 VAC        | Yes                  |
| HTEC8  | 0.80 mm | 40-200          | Black LCP          | Copper Alloy     | -55 °C to +125 °C    | 3.0 A (2 pins)  | 215 VAC        | Yes                  |
| HSEC8  | 0.80 mm | 18-200          | Black LCP          | BeCu             | -55 °C to +125 °C    | 2.8 A (2 pins)  | 240 VAC        | Yes                  |
| HSEC1  | 1.00 mm | 20-140          | Black LCP          | Phosphor Bronze  | -55 °C to +125 °C    | 2.2 A (2 pins)  | 215 VAC        | Yes                  |

**(0.80 mm) .0315" PITCH • VERTICAL EDGE CARD SOCKET**

|              |            |                          |                       |                       |           |          |                      |
|--------------|------------|--------------------------|-----------------------|-----------------------|-----------|----------|----------------------|
| <b>HSEC8</b> | <b>- 1</b> | <b>POSITIONS PER ROW</b> | <b>CARD THICKNESS</b> | <b>PLATING OPTION</b> | <b>DV</b> | <b>A</b> | <b>OTHER OPTIONS</b> |
|--------------|------------|--------------------------|-----------------------|-----------------------|-----------|----------|----------------------|

**09, 10, 13, 20, 25, 30, 37, 40, 49, 50, 60, 70, 80, 100**  
(13, 25, 49 only available with -L or -L2 option; 09 only available with -L2 option; 37 only available with -L option)

**-01**  
= (1.60 mm) .062" thick card

**-03**  
= (2.36 mm) .093" thick card

**-L**  
= 10 μ" (0.25 μm) Gold on contact area, Matte Tin on tail

**-S**  
= 30 μ" (0.76 μm) Gold on contact area, Matte Tin on tail

**-K**  
= Polyimide Pick & Place Pad

**-BL**  
= Board Locks; -01 card only (Weld tab standard)

**-L**  
= Latching Option; -01 card only (13, 25, 37, 49 only) (Weld tab standard)

**-L2**  
= ECDP Latching; -01 card only (09, 13, 25, 49 only) (For use with ECDP) (Weld tab standard)

**-WT**  
= Weld tab

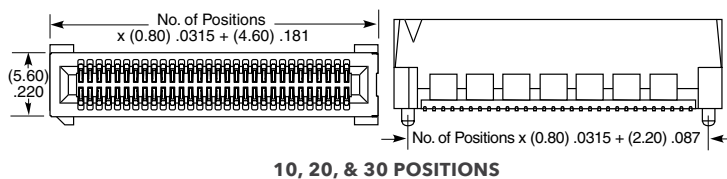
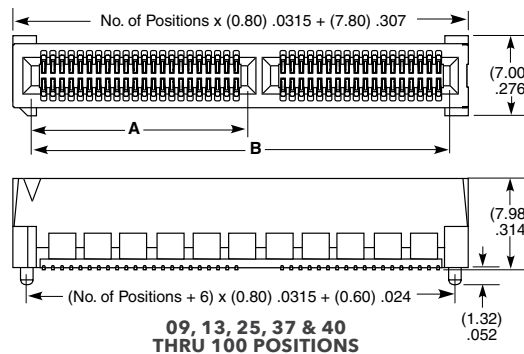
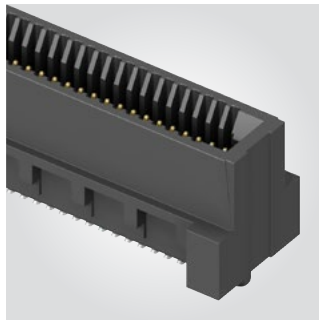
**-TR**  
= Tape & Reel (09 - 70 only)

**-FR**  
= Full Reel Tape & Reel (must order max. quantities per reel; contact Samtec for quantity breaks) (09-70 only)

**HSEC8-DV**

**Card Mates:**  
(1.60 mm) .062" card  
(2.36 mm) .093" card  
HSC8

**Cable Mates:**  
ECDP



**OTHER SOLUTIONS**

For complete edge card system with cards and sockets, visit [samtec.com?RU8](http://samtec.com?RU8).

For a card to mate with an HSEC8 socket, visit [samtec.com?HSC8](http://samtec.com?HSC8)



| POSITIONS PER ROW | A             | B             | CABLE   | CONNECTOR    |
|-------------------|---------------|---------------|---------|--------------|
| 09*†              | (4.50) .177   | (11.80) .465  | ECDP-04 | HSEC8-109-L2 |
| 13*†              | (6.10) .240   | (15.00) .591  | ECDP-08 | HSEC8-113-L2 |
| 25*†              | (6.10) .240   | (24.60) .969  | ECDP-16 | HSEC8-125-L2 |
| 37†               | (18.10) .713  | (34.20) 1.346 | ECDP-32 | HSEC8-149-L2 |
| 40                | (18.90) .744  | (36.60) 1.441 |         |              |
| 49*†              | (22.90) .902  | (43.80) 1.724 |         |              |
| 50                | (22.90) .902  | (44.60) 1.756 |         |              |
| 60                | (26.90) 1.059 | (52.60) 2.071 |         |              |
| 70†               | (26.90) 1.059 | (60.60) 2.386 |         |              |
| 80†               | (26.90) 1.059 | (68.60) 2.701 |         |              |
| 100†              | (26.90) 1.059 | (84.60) 3.331 |         |              |

Positions where no dimensions are given do not have keying feature.

\* Mates with ECDP Series  
† Available with -01 Card Only

**Note:**  
Some sizes, styles and options are non-standard, non-returnable.

View complete specifications at: [samtec.com?HSEC8-DV](http://samtec.com?HSEC8-DV)

## X-ON Electronics

Largest Supplier of Electrical and Electronic Components

*Click to view similar products for [Standard Card Edge Connectors](#) category:*

*Click to view products by [Samtec](#) manufacturer:*

Other Similar products are found below :

[CR7E-30DB-3.96E\(72\)](#) [6364499-1](#) [6565204-6](#) [PKC-156](#) [1437274-4](#) [147889-1](#) [1489165-4](#) [EBT15622B2X](#) [1-582587-1](#) [284-0102-12100](#)  
[286-0052-12101A](#) [306022901000000](#) [307-012-502-202](#) [307-056-520-300](#) [2129318-1](#) [245-062-520-350](#) [287-0032-12101](#) [306-028-525-102](#)  
[307-072-526-202](#) [345-060-559-303](#) [392-008-559-201](#) [534671-1](#) [341-240-317](#) [345-044-500-300](#) [346-240-318](#) [395-100-524-300](#) [09-07-2032](#)  
[10035388-802LF](#) [10115859-011LF](#) [10122859-009LF](#) [10127905-B04B24BLF](#) [530555-1](#) [5-678046-1](#) [73726-0005](#) [66308-1](#) [1-1437275-6](#)  
[PEC-07-02-T-S-A](#) [346-014-520-801](#) [307-048-502-202](#) [CE100F22-9-C](#) [CE100F26-7-C](#) [CE100F28-3-D](#) [CE156F18-9-C](#) [CE156F22-5-D](#)  
[CE156F22-9-C](#) [CT100F22-2-D](#) [CT100F22-3-D](#) [CT100F24-2-D](#) [CT100F24-3-D](#) [CT100F24-6-C](#)