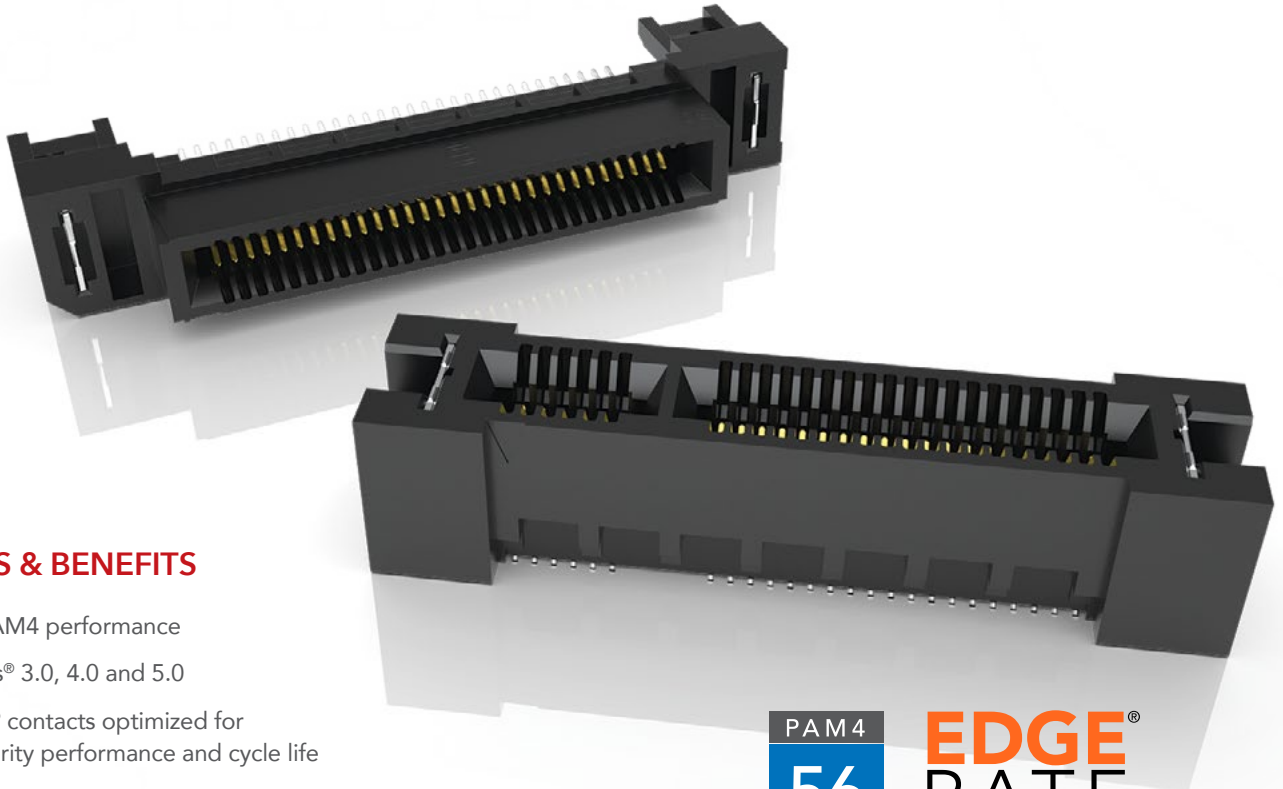


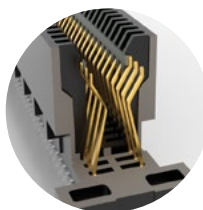
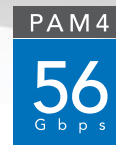
HIGH-SPEED EDGE CARD SYSTEMS

0.60 mm, 0.80 mm and 1.00 mm PITCH



FEATURES & BENEFITS

- 56 Gbps PAM4 performance
- PCI Express® 3.0, 4.0 and 5.0
- Edge Rate® contacts optimized for signal integrity performance and cycle life
- Up to 200 positions available
- Vertical, right-angle, edge mount, pass-through orientations
- Power/signal combo, press-fit tails, rugged weld tabs, locks and latches
- Mating cable assemblies available



Rugged tucked beam technology (HTEC8)



Differential pair for increased speed (HSEC8-DP)



Custom designs allow for misalignment in the X-Y axes (HSEC1)

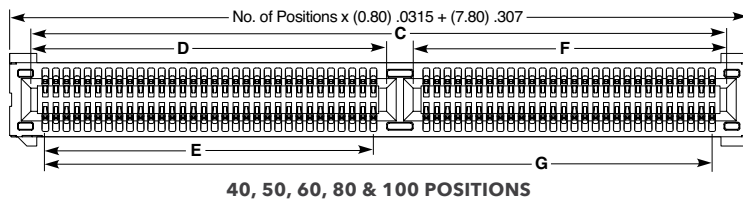
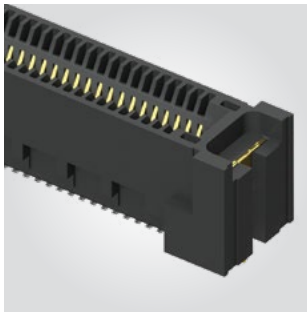
KEY SPECIFICATIONS

SERIES	PITCH	TOTAL POSITIONS	INSULATOR MATERIAL	CONTACT MATERIAL	OPERATING TEMP RANGE	CURRENT RATING	VOLTAGE RATING	LEAD-FREE SOLDERABLE
HSEC6	0.60 mm	56-168	Black LCP	Copper Alloy	-55 °C to +125 °C	0.8 A (12 pins)	300 VAC	Yes
HTEC8	0.80 mm	40-200	Black LCP	Copper Alloy	-55 °C to +125 °C	3.0 A (2 pins)	215 VAC	Yes
HSEC8	0.80 mm	18-200	Black LCP	BeCu	-55 °C to +125 °C	2.8 A (2 pins)	240 VAC	Yes
HSEC1	1.00 mm	20-140	Black LCP	Phosphor Bronze	-55 °C to +125 °C	2.2 A (2 pins)	215 VAC	Yes

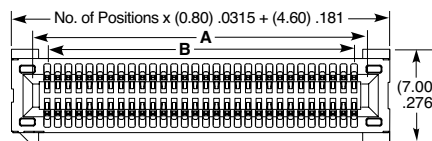
(0.80 mm) .0315" PITCH • RUGGED HIGH-SPEED EDGE CARD SOCKET

HTEC8	1	POSITIONS PER ROW	01	PLATING OPTION	DV	OPTION	OTHER OPTIONS
		20, 30, 40, 50, 60, 80, 100		-L = 10 μ" (0.25 μm) Gold on contact area, Matte Tin on tail -S = 30 μ" (0.76 μm) Gold on contact area, Matte Tin on tail		Leave blank for no alignment pin -A = Alignment Pin -WT = Weld Tab (-A option required)	-K = (7.00 mm) .276" DIA Polyimide Pick & Place Pad -TR = Tape & Reel (20 thru 60 positions only) (Leave blank for tray) -FR = Full Reel Tape & Reel (must order max. quantity per reel; contact Samtec for quantity breaks) (20 thru 60 positions only) (Leave blank for tray)

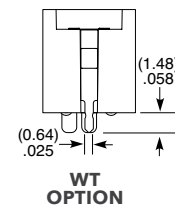
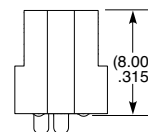
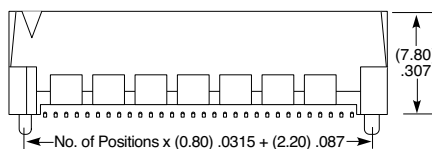
HTEC8
Card Mates:
(1.60 mm) .062" thick card



POSITIONS PER ROW	C	D	E	F	G
40	(36.60) 1.440	(18.90) .744	(16.80) .661	(15.70) .618	(34.40) 1.354
50	(44.60) 1.756	(22.90) .902	(20.80) .819	(19.70) .776	(42.40) 1.669
60	(52.60) 2.071	(26.90) 1.059	(24.80) .976	(23.70) .933	(50.40) 1.984
80	(68.60) 2.701	(26.90) 1.059	(24.80) .976	(39.70) 1.563	(66.40) 2.614
100	(84.60) 3.331	(26.90) 1.059	(24.80) .976	(55.70) 2.193	(82.40) 3.244



POSITIONS PER ROW	A	B
20	(17.40) .685	(15.20) 5.98
30	(25.40) 1.000	(23.20) .913



Note:
Some sizes, styles and options are non-standard, non-returnable.

View complete specifications at: samtec.com?HTEC8

X-ON Electronics

Largest Supplier of Electrical and Electronic Components

Click to view similar products for [Standard Card Edge Connectors](#) category:

Click to view products by [Samtec](#) manufacturer:

Other Similar products are found below :

[CR7E-30DB-3.96E\(72\)](#) [6364499-1](#) [6565204-6](#) [PKC-156](#) [1437274-4](#) [147889-1](#) [1489165-4](#) [EBT15622B2X](#) [1-582587-1](#) [284-0102-12100](#)
[286-0052-12101A](#) [306022901000000](#) [307-012-502-202](#) [307-056-520-300](#) [2129318-1](#) [245-062-520-350](#) [287-0032-12101](#) [306-028-525-102](#)
[307-072-526-202](#) [345-060-559-303](#) [392-008-559-201](#) [534671-1](#) [341-240-317](#) [345-044-500-300](#) [346-240-318](#) [395-100-524-300](#) [09-07-2032](#)
[10035388-802LF](#) [10115859-011LF](#) [10122859-009LF](#) [10127905-B04B24BLF](#) [530555-1](#) [5-678046-1](#) [73726-0005](#) [66308-1](#) [1-1437275-6](#)
[PEC-07-02-T-S-A](#) [346-014-520-801](#) [307-048-502-202](#) [CE100F22-9-C](#) [CE100F26-7-C](#) [CE100F28-3-D](#) [CE156F18-9-C](#) [CE156F22-5-D](#)
[CE156F22-9-C](#) [CT100F22-2-D](#) [CT100F22-3-D](#) [CT100F24-2-D](#) [CT100F24-3-D](#) [CT100F24-6-C](#)