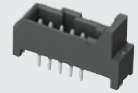




T2I-02-VT-T-S-TH



T2I-05-VT-T-S-TH



I2SS-05-24-T

(2.00 mm) .0787"

I2SS, T2I SERIES

DISCRETE WIRE IDC SYSTEM

Mates with:

T2I

SPECIFICATIONS

For complete specifications see www.samtec.com?I2SS

Insulator Material:

Black Nylon

Contact Material:

Phosphor Bronze

Plating:

Sn over 50 μ" (1.27 μm) Ni

Operating Temp Range:

-55 °C to +105 °C

(connector only)

RoHS Compliant:

Yes

PROCESSING

Lead-Free Solderable:

Yes

RECOGNITIONS

For complete scope of recognitions see www.samtec.com/quality



FILE NO. E111594

Note:

Some sizes, styles and options are non-standard, non-returnable.

I2SS	NO. OF POSITIONS	WIRE GAUGE	PLATING OPTION
	-02, -03, -04, -05	-24 = 24 AWG	-T = Matte Tin

NO. OF POSITIONS	A	B	C	D
-02	(5.00) .197	(8.50) .335	(8.80) .346	(7.90) .311
-03	(7.00) .276	(10.50) .413	(10.80) .425	(9.90) .390
-04	(9.00) .354	(12.50) .492	(12.80) .504	(11.90) .469
-05	(11.00) .433	(14.50) .571	(14.80) .583	(13.90) .547

APPLICATION

Assemble with standard pliers. No special tooling required.

Mates with:

I2SS

SPECIFICATIONS

For complete specifications see www.samtec.com?T2I

Insulator Material:

Black LCP

Contact Material:

Phosphor Bronze

Plating:

Sn over 50 μ" (1.27 μm) Ni

Operating Temp Range:

-55 °C to +105 °C

(connector only)

RoHS Compliant:

Yes

PROCESSING

Lead-Free Solderable:

Yes

T2I	NO. OF POSITIONS	LEAD STYLE	PLATING OPTION	ROW	TAIL OPTION
	-02, -03, -04, -05	-VT = Vertical	-T = Matte Tin	-S = Single Row	-TH = Through-hole

NO. OF POSITIONS	A	B
-02	(13.80) .543	(12.40) .488
-03	(15.80) .622	(14.40) .567
-04	(17.80) .701	(16.40) .646
-05	(19.80) .780	(18.40) .724

X-ON Electronics

Largest Supplier of Electrical and Electronic Components

Click to view similar products for [Headers & Wire Housings](#) category:

Click to view products by [Samtec](#) manufacturer:

Other Similar products are found below :

[892-18-020-10-001101](#) [58102-G61-06LF](#) [582553-1](#) [0009485154](#) [009176003701906](#) [0050291907](#) [LY20-4P-DT1-P1E-BR](#) [02.125.8002.8](#)
[609-3404](#) [61062-3](#) [61082-181009](#) [622-3653LF](#) [63453-116](#) [636-1030](#) [636-1427](#) [636-3427](#) [636-4007](#) [641938-9](#) [641991-4](#) [644827-2](#) [65817-010LF](#) [65817-015LF](#) [65863-015LF](#) [66207-023LF](#) [67095-007LF](#) [67601157](#) [68645-018](#) [68648-049](#) [70.362.1628.0](#) [70-4210](#) [70-4226B](#) [70-4853B](#) [707-5020](#) [707-5028](#) [71.350.2428.0](#) [71918-208LF](#) [71961-016LF](#) [733-134](#) [733-162](#) [754199-000](#) [760-3052](#) [787-8014-00](#) [79531-3000](#)
[FCN-360C032-B](#) [FCN-367T-T012/H](#) [FCN-723D010/2](#) [80.063.4001.1](#) [800-90-001-10-001000](#) [800-90-010-10-002000](#) [801-43-002-10-013000](#)