

DIMENSIONS ARE IN INCHES		UNLESS OTHERWISE NOTED		TITLE:	DWG NO:
TOLERANCES ARE:		TOLERANCES ARE:		IC ASSEMBLY	ICX-XXX-XXXX-X-X
ONE PLACE DECIMALS ±	THREE PLACE DECIMALS ±	ONE PLACE DECIMALS ±	THREE PLACE DECIMALS ±		
TWO PLACE DECIMALS ±	FOUR PLACE DECIMALS ±	ANGLES ±			SHEET 1 OF 2

ICX-XXX-XXXX-X-X

- BODY SPECIFICATION**
- IC: STANDARD PROFILE
 - ICA: OPEN CENTER, STANDARD PROFILE
 - ICE: HI-TEMP, SUPER LOW PROFILE
 - ICO: OPEN CENTER, SUPER LOW PROFILE
 - ICS: STANDARD, SLIM PROFILE
- SERIES SPECIFICATION**
(SEE TABLE 1)
- POSITION SPECIFICATION**
(SEE TABLE 1)
- CONTACT FORCE OPTION**
- Z: LOW CONTACT FORCE
 - : LEAVE BLANK FOR STANDARD CONTACT FORCE
- LEAD STYLE SPECIFICATION**

- OPTION #2**
- H: OPEN CENTER, HIGH TEMP (USE ICA-XXX-V) (AVAILABLE ONLY WITH ICA BODY SPEC)
- OPTION #1**
- L: LOCKING LEAD (USE SC-1L1-XX: STYLE -S, -ZS, -P OR -ZP ONLY)
 - 2: STYLE -W ONLY (SEE TABLE 2)
 - 3: STYLE -W ONLY (SEE TABLE 2)
- PLATING SPECIFICATION**

- NOTES:
- MINIMUM PUSHOUT FORCES:
IC ASSEMBLY: 12 LBS.
ICA ASSEMBLY: 5 LBS.
ICE ASSEMBLY: 10 LBS.
ICO ASSEMBLY: 5 LBS.
ICS ASSEMBLY: 12 LBS.
 - MAXIMUM ALLOWABLE BOW:
.003 [.08] INCH PER INCH.

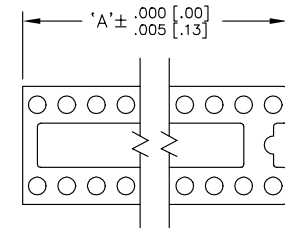
USE SPECIFIED LEAD STYLE FROM TABLE 2 TO IDENTIFY LEAD SOCKET

- GG: GOLD/GOLD- SPECIFY -GG IN SOCKET SUFFIX -XX
- GT: GOLD/TIN- SPECIFY -GT IN SOCKET SUFFIX -XX
- TT: TIN/TIN- SPECIFY -TT IN SOCKET SUFFIX -XX (STYLES -S, -ZS, -W, -ZW, -A, -H, -C, -L, -M, -N ONLY)
- ST: LOW GOLD/TIN - SPECIFY -ST IN SOCKET SUFFIX -XX(-S & -ZS ONLY)(ON -L OPTION USE SC-1L1-GT OR EZ-1L1-GT)
- EE: EXTRA HEAVY GOLD/EXTRA HEAVY GOLD-SPECIFY -EE IN SOCKET SUFFIX -XX(STYLES -S & -ZS ONLY)
- EG: EXTRA HEAVY GOLD/GOLD- SPECIFY -EG IN SOCKET SUFFIX -XX(STYLES -S & -ZS ONLY)
- ET: EXTRA HEAVY GOLD/TIN- SPECIFY -ET IN SOCKET SUFFIX -XX(STYLES -S & -ZS ONLY)
- GE: GOLD/EXTRA HEAVY GOLD- SPECIFY -GE IN SOCKET SUFFIX -XX(STYLES -S & -ZS ONLY)
- TE: TIN/EXTRA HEAVY GOLD- SPECIFY -TE IN SOCKET SUFFIX -XX(STYLES -S & -ZS ONLY)
- FT: FLASH GOLD/TIN- SPECIFY -FT IN SOCKET SUFFIX -XX(STYLES -S & -ZS ONLY)

TABLE 1 (* : CUT TO LENGTH IN FIG.1)

SERIES	POSITION	IC	ICA	ICA-H	ICE	ICO	ICS
-3	06	SB-306	N/R	N/R	N/R	N/R	SBS-308*
	08	SB-308	SBOA-308	ICA-308-V	N/R	SBO-308	SBS-308
	10	SB-314*	N/R	N/R	N/R	N/R	SBS-314*
	12	N/R	N/R	N/R	N/R	N/R	N/R
	14	SB-314	SBOA-314	ICA-314-V	SBE-314	SBO-314	SBS-314
	16	SB-316	SBOA-316	ICA-316-V	SBE-316	SBO-316	SBS-316
	18	SB-318	SBOA-318	ICA-318-V	SBE-318	SBO-318	SBS-318
	20	SB-320	SBOA-320	ICA-320-V	N/R	SBO-320	SB-320
	22	N/R	SBOA-324*	ICA-322-V	N/R	SBO-324*	N/R
	24	SB-324	SBOA-324	ICA-324-V	N/R	SBO-324	SB-324
28	N/R	ICA-328-V	ICA-328-V	N/R	N/R	N/R	
-4	22	SB-422	SBOA-422	N/R	N/R	SBO-422	SB-422
	24	SB-424	N/R	N/R	N/R	N/R	N/R
-6	10	SB-614*	N/R	N/R	N/R	N/R	N/R
	14	SB-614	N/R	N/R	N/R	N/R	N/R
	16	SB-616	N/R	N/R	N/R	N/R	N/R
	18	SB-618	N/R	N/R	N/R	N/R	N/R
	20	N/R	N/R	N/R	N/R	N/R	N/R
	22	N/R	N/R	N/R	N/R	N/R	N/R
	24	SB-624	SBOA-624	ICA-624-V	SBE-624	SBO-624	SBS-624
	28	SB-628	SBOA-628	ICA-628-V	SBE-628	SBO-628	SBS-628
	32	SB-640*	SBOA-632	ICA-632-V	N/R	SBO-632	SBS-632
	40	SB-640	SBOA-640	ICA-640-V	SBE-640	SBO-640	SBS-640
48	N/R	SBOA-648	ICA-648-V	SBE-648	SBO-648	N/R	
-9	14	N/R	N/R	N/R	N/R	N/R	N/R
	24	N/R	N/R	N/R	N/R	N/R	N/R
	28	N/R	N/R	N/R	N/R	N/R	N/R
	32	N/R	N/R	N/R	N/R	N/R	N/R
	40	SB-964*	N/R	N/R	SBE-964*	N/R	N/R
	48	N/R	N/R	N/R	N/R	N/R	N/R
	50	SB-964*	N/R	N/R	N/R	N/R	N/R
	64	SB-964	N/R	N/R	SBE-964	N/R	N/R

FIGURE 1



REF. PART No.	'A'	
IC-310-XXX	.535±.005	[13.59 ±.13]
IC-610-XXX	.500	[12.70]
IC-632-XXX	1.600	[40.64]
IC-632-XXX	1.600	[40.64]
IC-940-XXX	2.000	[50.80]
IC-950-XXX	2.500	[63.50]
ICA-322-XXX	1.100	[27.94]
ICS-306-XXX	.340±.005	[8.64±.13]
ICS-310-XXX	.500	[12.70]
ICE-940-XXX	2.000±.005	[50.80±.13]
ICO-322-XXX	1.100	[27.94]

Do not scale from this print

PROPRIETARY NOTE
THIS DOCUMENT CONTAINS INFORMATION CONFIDENTIAL AND PROPRIETARY TO SAMTEC INC. AND SHALL NOT BE REPRODUCED OR TRANSMITTED TO OTHER DOCUMENTS OR DISCLOSED TO OTHERS OR USED FOR ANY PURPOSE OTHER THAN THAT FOR WHICH IT WAS OBTAINED WITHOUT THE EXPRESSED WRITTEN CONSENT OF SAMTEC INC.

MISC/MKTG
ICX-MKT

samtec

520 PARK EAST BLVD. NEW ALBANY, INDIANA 47150
PHONE (812) 944-6733 P.O. BOX 1147
CODE 55322

MADE BY: JORDAN 10-29-86 ICX-XXX-XXXX-X-X
SHEET 1 OF 2

TABLE 2
SOCKET SPECIFICATION

LEAD STYLE	'B'	"C"	STANDARD INSERTION FORCE				LOW INSERTION FORCE (-Z OPTION)				-L OPTION					
			IC, ICA, ICS	FIG.	ICE	FIG.	ICO	FIG.	IC, ICA, ICS	FIG.	ICE	FIG.	ICO	FIG.	IC, ICA, ICE, ICO, ICS	FIG.
A	.038 [.96]	.353 [8.97]	SC-6P1-XX	3	SC-6P1-XX	2	SC-6P1-XX	2	EZ-6P1-XX	3	EZ-6P1-XX	2	EZ-6P1-XX	2	N/A	
B	.038 [.96]	.203 [5.16]	N/A		N/A		SC-1S1-XX	2	N/A		N/A		EZ-1S1-XX	2	N/A	
C	.016 [.41]	.165 [4.19]	N/A		N/A		SC-8P1-XX	2	N/A		N/A		EZ-8P1-XX	2	N/A	
E	.038 [.96]	.542 [13.76]	SC-2P3-XX	3	SC-2P3-XX	2	SC-2P3-XX		EZ-2P3-XX	3	EZ-2P3-XX	2	N/A		N/A	
F	.008 [.20]	.293 [7.44]	N/A		N/A		SC-1P2-XX	3	N/A		N/A		N/A		N/A	
H	.038 [.96]	.703 [17.86]	SC-2P2-XX	3	SC-2P2-XX	2	N/A		EZ-2P2-XX	3	EZ-2P2-XX	2	N/A		N/A	
J	.038 [.96]	.600 [15.24]	SC-1P3-XX	3	SC-1P3-XX	2	SC-1P3-XX	2	N/A		N/A		N/A		N/A	
K	.038 [.96]	.703 [17.86]	SC-2P1-XX	3	N/A		SC-2P1-XX	2	N/A		N/A		N/A		N/A	
L	.038 [.96]	.230 [5.84]	N/A		SC-3P1-XX	2	SC-3P1-XX	2	N/A		EZ-3P1-XX	2	EZ-3P1-XX	2	N/A	
M	.028 [.71]	.240 [6.10]	N/A		SC-4P1-XX	2	SC-4P1-XX	2	N/A		EZ-4P1-XX	2	EZ-4P1-XX	2	N/A	
N	.028 [.71]	.190 [4.83]	N/A		SC-5P1-XX	2	SC-5P1-XX	2	N/A		EZ-5P1-XX	2	EZ-5P1-XX	2	N/A	
P	.038 [.96]	.205 [5.21]	N/A		SC-1M1-XX	2	SC-1M1-XX	2	N/A		EZ-1M1-XX	2	EZ-1M1-XX	2	N/A	
S	.038 [.96]	.300 [7.62]	SC-1P1-XX	3	SC-1P1-XX	2	SC-1P1-XX	2	EZ-1P1-XX	3	EZ-1P1-XX	2	EZ-1P1-XX	2	SC-1L1-XX	4
T	.028 [.71]	.167 [4.24]	N/A		SC-1M2-XX	2	SC-1M2-XX	2	N/A		EZ-1M2-XX	2	EZ-1M2-XX	2	N/A	
W	.038 [.96]	.703 [17.86]	SC-1W1-XX-1	3	SC-1W1-XX-1	2	N/A		EZ-1W1-XX-1	3	EZ-1W1-XX-1	2	N/A		N/A	
W2	.038 [.96]	.553 [14.05]	SC-1W1-XX-2	3	SC-1W1-XX-2	2	N/A		EZ-1W1-XX-2	3	EZ-1W1-XX-2	2	N/A		N/A	
W3	.038 [.96]	.453 [11.51]	SC-1W1-XX-3	3	SC-1W1-XX-3	2	N/A		EZ-1W1-XX-3	3	EZ-1W1-XX-3	2	N/A		N/A	

FIGURE 2
NON-FLUSH ASSY.

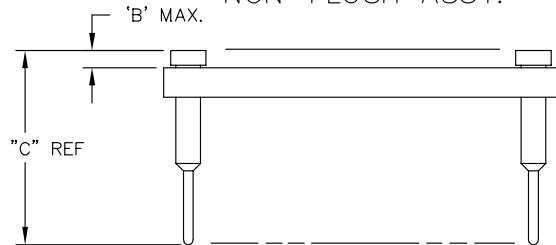


FIGURE 3
FLUSH ASSY.

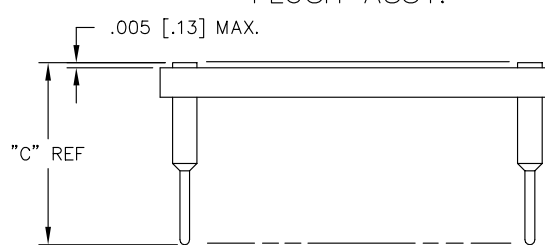
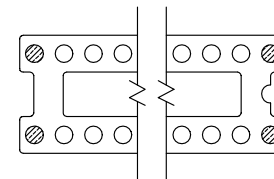


FIGURE 4
-L OPTION



⊗ : FILL POSITION WITH SC-1L1-XX
(EZ-1L1-XX FOR -Z OPTION)

(STYLE -S, -ZS, -P & -ZP)

TABLE 3

SERIES	LEAD STYLES	PACKAGING TUBE	PLUG
-3		PT-3-24-01-01	TP-03
-4	-A, -B, -C, -D,	PT-4-24-02-01	
-6	-F, -G, -L, -M,	PT-6-24-03-01	
-9	-N, -P, -S, -T	PT-9-24-04-01	
-3		PT-3-24-05-01	
-4	-E, -H, -J, -K,	PT-4-24-06-01	
-6	-W, -W1, -W2	PT-6-24-07-01	
-9		PT-1-24-01-25	

Do not scale
from this print

PROPRIETARY NOTE

THIS DOCUMENT CONTAINS INFORMATION CONFIDENTIAL AND PROPRIETARY TO SAMTEC INC. AND SHALL NOT BE REPRODUCED OR TRANSFERRED TO OTHER DOCUMENTS OR DISCLOSED TO OTHERS OR USED FOR ANY PURPOSE OTHER THAN THAT FOR WHICH IT WAS OBTAINED WITHOUT THE EXPRESSED WRITTEN CONSENT OF SAMTEC INC.

samtec

520 PARK EAST BLVD. NEW ALBANY, INDIANA 47150
PHONE (812) 944-6733 P.O. BOX 1147
CODE 55322

MISC\MKTG
ICX-2MKT

MADE BY:

ICX-XXX-XXXX-X-X

X-ON Electronics

Largest Supplier of Electrical and Electronic Components

Click to view similar products for [Samtec manufacturer](#):

Other Similar products are found below :

[ESQT-130-03-M-Q-368](#) [ESQT-135-03-F-D-380](#) [QTE-060-01-L-D-A](#) [MSAS-179-ZUGG-18](#) [MTSW-103-07-F-S-240](#) [BCS-116-L-S-TE](#)
[ERF8-020-05.0-S-DV-K-TR](#) [ERF8-060-05.0-L-DV-K-TR](#) [IDMD-10-T-12.00-A-G-R](#) [SFML-115-01-S-D](#) [SFML-125-01-S-D](#) [LSHM-120-](#)
[02.5-L-DV-A-N-K-TR](#) [ESQ-110-14-G-D](#) [ESQT-125-03-F-D-310](#) [SO-0515-01-01-02](#) [FJH-50-D-12.00-4](#) [CES-150-01-T-D](#) [QTE-040-04-L-D-](#)
[A](#) [QTH-020-04-F-D-DP-A-K-TR](#) [QTH-060-01-F-D-A](#) [QTH-090-04-L-D-A](#) [TCSD-10-S-05.00-01-F-N](#) [TCSD-15-D-02.00-01-N](#) [TFM-115-](#)
[02-L-DH](#) [TFM-120-12-S-D-LC](#) [TFML-140-02-S-D](#) [TLW-107-05-G-D](#) [BDL-136-T-E](#) [TSS-132-01-G-S](#) [TST-113-04-S-D-RA](#) [TSW-105-14-](#)
[F-D](#) [MMS-110-01-H-DH](#) [HPF-03-02-T-S](#) [DW-25-11-L-D-450](#) [ERF8-020-01-L-D-RA-L-TR](#) [ERF8-040-05.0-L-DV-TR](#) [SL-120-T-10](#) [SLM-](#)
[115-01-S-D](#) [CLP-132-02-G-D](#) [TFC-125-02-F-D-A-K](#) [TFM-130-03-H-D](#) [TSW-108-08-G-S-RA](#) [TSW-202-07-T-S](#) [ISDF-25-D-M](#) [IPT1-105-](#)
[01-S-D-RA](#) [IPL1-125-01-S-D-RA](#) [HTSW-103-08-L-S-RA](#) [ESQ-116-33-T-T](#) [ERM8-020-02.0-S-DV-TR](#) [TCSD-10-D-06.00-01-N](#)