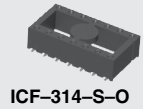
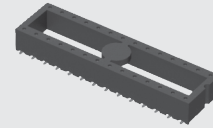


ICF-328-T-O



(2.54 mm) .100"

ICF SERIES

# SURFACE MOUNT DIP SOCKET

## SPECIFICATIONS

For complete specifications and recommended PCB layouts see [www.samtec.com?ICF](http://www.samtec.com?ICF)

**Insulator Material:**

Black Liquid Crystal Polymer

**Contact Material:**

BeCu

**Plating:**

Sn or Au over

50  $\mu$ " (1.27  $\mu$ m) Ni

**Operating Temp Range:**

-55 °C to +125 °C

**Insertion Depth:**

(2.54 mm) .100" to

(3.81 mm) .150"

**Insertion Force/Contact:**

(1.39 N) 5 oz average

**Withdrawal Force/Contact:**

(1.11 N) 4 oz average

**RoHS Compliant:**

Yes

## PROCESSING

**Lead-Free Solderable:**

Yes

**SMT Lead Coplanarity:**

(0.15 mm) .006" max\*

\*(.004" stencil solution may be available; contact

IPG@samtec.com)

## RECOGNITIONS

For complete scope of

recognitions see

[www.samtec.com/quality](http://www.samtec.com/quality)



## TYPE SOCKET

**ICF**  
=Surface Mount  
IC Socket

## ROW SPACING & NO. OF CONTACTS

## PLATING OPTION

**-S**  
=30  $\mu$ " (0.76 $\mu$ m)  
Gold on contact,  
Matte Tin on tail

**-T**  
= Matte Tin

## TAIL OPTION

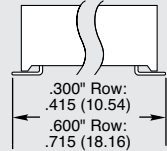
**-I**  
=Tails In



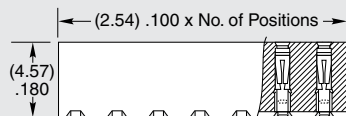
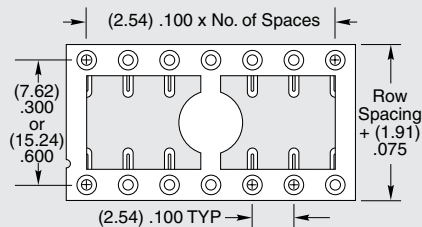
## OTHER OPTION

**-TR**  
=Tape &  
Reel  
Packaging

**-O**  
=Tails Out



Specify from chart below



"-XXX"	Row Space	No. of Contacts
-308	(7.62) .300	08
-314		14
-316		16
-318		18
-320		20
-328	(15.24) .600	28
-624		24
-628		28
-632		32
-640		40

**Note:**  
Some sizes, styles and options are non-standard, non-returnable.

## X-ON Electronics

Largest Supplier of Electrical and Electronic Components

*Click to view similar products for [IC & Component Sockets](#) category:*

*Click to view products by [Samtec](#) manufacturer:*

Other Similar products are found below :

[614-DG5](#) [670](#) [672](#) [673](#) [712-93-120-41-001000](#) [714-93-104-31-018000](#) [8-1437531-4](#) [8150-6P10](#) [835-43-014-10-001000](#) [851-41-006-10-001000](#) [851-43-008-20-001000](#) [851-43-014-20-001000](#) [851-93-006-20-001000](#) [851-93-010-20-001000](#) [853-43-020-10-001000](#) [86.010.0053.0](#) [116-43-308-41-007000](#) [121-13-318-41-001000](#) [121-13-320-41-001000](#) [121-13-308-41-001000](#) [123-43-314-41-801000](#) [123-43-420-41-001000](#) [122-13-316-41-001000](#) [123-13-624-41-001000](#) [123-43-306-41-001000](#) [12-3513-11](#) [123-91-320-41-001000](#) [126-43-310-41-002000](#) [AKSUN](#) [37V-T](#) [1437503-9](#) [1437504-1](#) [APA-640-G-P](#) [146-44-308-41-013000](#) [146-43-308-41-012000](#) [160-10-308-00-001000](#) [160-40-320-00-001000](#) [214-99-306-01-670800](#) [2-382761-4](#) [2-5331677-4](#) [2-640360-3](#) [2801-3-00-44-00-00-07-0](#) [940-44-052-17-400004](#) [299-83-314-11-001101](#) [1986000-2](#) [2103331641101000](#) [210-43-320-41-001000](#) [210-99-628-41-001000](#) [2-1437504-6](#) [2-1437515-5](#) [2-1437531-2](#)