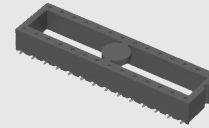


ICF-328-T-O



(2.54 mm) .100"

ICF SERIES

# SURFACE MOUNT DIP SOCKET

## SPECIFICATIONS

For complete specifications and recommended PCB layouts see [www.samtec.com?ICF](http://www.samtec.com?ICF)

**Insulator Material:**

Black Liquid Crystal Polymer

**Contact Material:**

BeCu

**Plating:**

Sn or Au over

50 μ" (1.27 μm) Ni

**Operating Temp Range:**

-55 °C to +125 °C

**Insertion Depth:**

(2.54 mm) .100" to

(3.81 mm) .150"

**Insertion Force/Contact:**

(1.39 N) 5 oz average

**Withdrawal Force/Contact:**

(1.11 N) 4 oz average

**RoHS Compliant:**

Yes

## PROCESSING

**Lead-Free Solderable:**

Yes

**SMT Lead Coplanarity:**

(0.15 mm) .006" max\*

\*(.004" stencil solution may be available; contact IPG@samtec.com)

## RECOGNITIONS

For complete scope of recognitions see [www.samtec.com/quality](http://www.samtec.com/quality)



### TYPE SOCKET

**ICF**  
=Surface Mount  
IC Socket

### ROW SPACING & NO. OF CONTACTS

### PLATING OPTION

**-S**  
=30 μ" (0.76μm)  
Gold on contact,  
Matte Tin on tail

**-T**  
= Matte Tin

### TAIL OPTION

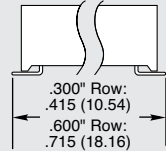
**-I**  
=Tails In



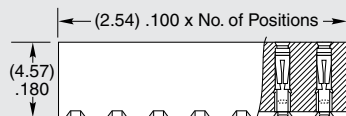
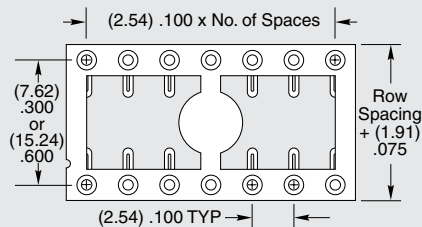
### OTHER OPTION

**-TR**  
=Tape &  
Reel  
Packaging

**-O**  
=Tails Out



Specify from chart below



"-XXX"	Row Space	No. of Contacts
-308	(7.62) .300	08
-314		14
-316		16
-318		18
-320		20
-328	(15.24) .600	28
-624		24
-628		28
-632		32
-640		40

**Note:**  
Some sizes, styles and options are non-standard, non-returnable.

## X-ON Electronics

Largest Supplier of Electrical and Electronic Components

*Click to view similar products for [IC & Component Sockets](#) category:*

*Click to view products by [Samtec](#) manufacturer:*

Other Similar products are found below :

[0066-3-17-15-30-14-02-0](#) [670](#) [672](#) [673](#) [694-13-640-00-672-000](#) [712-93-120-41-001000](#) [714-93-104-31-018000](#) [8059-4G1-LF](#) [807-22-001-10-001101](#) [807-22-001-10-006101](#) [807-22-001-30-011101](#) [807-22-001-30-012101](#) [807-22-001-30-013101](#) [807-22-001-30-014101](#) [8-1437531-4](#) [8150-6P10](#) [833-93-034-10-001000](#) [851-41-006-10-001000](#) [851-43-008-20-001000](#) [851-43-014-20-001000](#) [851-93-006-20-001000](#) [851-93-010-20-001000](#) [853-43-020-10-001000](#) [86.010.0053.0](#) [116-43-308-41-007000](#) [PX-68LCC](#) [121-13-318-41-001000](#) [121-13-320-41-001000](#) [121-13-308-41-001000](#) [123-43-314-41-801000](#) [123-43-420-41-001000](#) [122-13-316-41-001000](#) [123-13-624-41-001000](#) [123-43-306-41-001000](#) [12-3513-11](#) [123-91-320-41-001000](#) [126-43-310-41-002000](#) [AKSUN 37V-T](#) [1437503-9](#) [1437504-1](#) [146-44-308-41-013000](#) [146-43-308-41-012000](#) [160-10-308-00-001000](#) [160-40-320-00-001000](#) [214-99-306-01-670800](#) [232-1270-02-0602](#) [2-382761-4](#) [2-5331677-4](#) [2-640360-3](#) [2801-2-00-50-00-00-07-0](#)