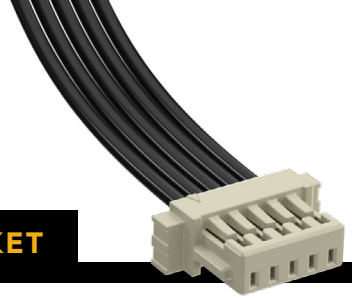


## (1.00 mm) .0394" PITCH • SINGLE ROW DISCRETE WIRE SOCKET



SERIES	PINS PER ROW	WIRE GAUGE	PLATING OPTION	ASSEMBLED LENGTH	OPTION
<b>S1SS</b> = Single Row PVC Cable	<b>-02, -03, -05, -07, -10 -15, -20</b> (Standard sizes)	<b>-28</b> = 28 AWG <b>-28C</b> = 28 AWG Color Coded Cable (S1SS only) <b>-30</b> = 30 AWG <b>-30C</b> = 30 AWG Color Coded Cable (S1SS only)	<b>-GF</b> = 3 μm (0.07 μm) Gold on contact and tail	<b>-"XX.XX"</b> = Assembled Length in Inches (45.72 mm) 01.80" min.	(Required Callout) <b>-L</b> = Single Ended With Latch <b>-L1</b> = Double Ended Latch down, straight (Pin 1 to Pin 1) <b>-L3</b> = Double Ended Latch up, straight (Pin 1 to Pin N) <b>-S</b> = Single Ended No Latch <b>-D-NUS</b> = Double Ended No Latch, "N" up, straight <b>-D-NDS</b> = Double Ended No Latch, "N" down, straight

### S1SS(T)

Board Mates:

T1M

Cable Mates:

T1SS(T), T1PS(T)

### SPECIFICATIONS

#### Insulator Material:

Nylon, White (with latch)  
Black, LCP (without latch)

#### Contact Material:

Phosphor Bronze

#### Plating:

Au over 50 μm (1.27 μm) Ni

#### Operating Temp Range (S1SS(T)/T1M):

-10 °C to +85 °C (PVC)

-40 °C to +125 °C (Teflon®)

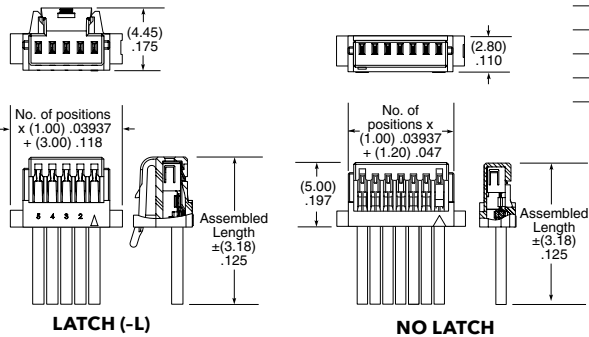
#### Current Rating (28 AWG):

2.7 A per pin (1 pin powered)

#### Voltage Rating:

250 VAC/353 VDC

Wire: 28 or 30 AWG



### S1SS CABLE COLOR CODING

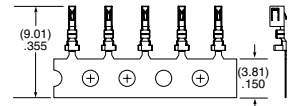
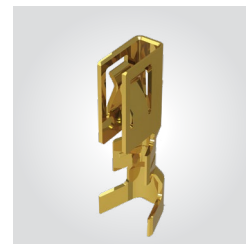
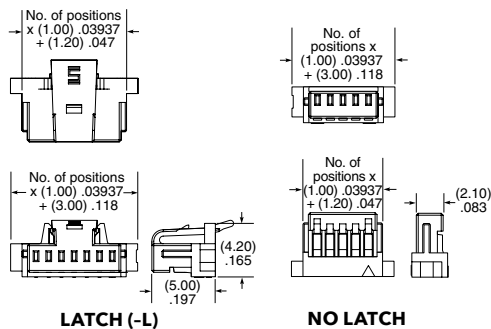
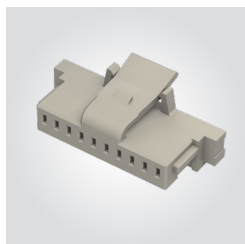
PIN	COLOR
1	BROWN
2	RED
3	ORANGE
4	YELLOW
5	GREEN
6	BLUE
7	VIOLET
8	GRAY
9	WHITE
10	BLACK
ETC	REPEAT

\*DuPont™ Teflon® is a registered trademark of the E.I. du Pont de Nemours and Company or its affiliates.

**Note:**  
Teflon® cable is intended for crimp only. Contact Samtec for solderable cable applications.

View complete specifications at: [samtec.com?S1SS](http://samtec.com?S1SS) & [samtec.com?S1SST](http://samtec.com?S1SST)

SERIES	NO. OF POSITIONS	LATCH	SERIES	01	PLATING
<b>ISS1</b> = Single Row Body	<b>-02, -03, -05, -07, -10, -15, -20</b>	(Leave blank for no latch) <b>-L</b> = Positive Latch	<b>CC09R</b> = Contact, Full Reel (25,000 Parts per Reel)		<b>-GF</b> = 3 μm (0.07 μm) Gold contact and tail



### TOOLING

Hand Tool: CAT-HT-309-2830-12

Clamp for mounting hand tool: CAT-HT-MNT-01

Mini Applicator: CAT-MC-309-2830-XX-01

#### Note:

Some lengths, styles and options are non-standard, non-returnable.

View complete specifications at: [samtec.com?ISS1](http://samtec.com?ISS1), [samtec.com?CC09R](http://samtec.com?CC09R) & [samtec.com?CC09M](http://samtec.com?CC09M)

## X-ON Electronics

Largest Supplier of Electrical and Electronic Components

*Click to view similar products for [Headers & Wire Housings](#) category:*

*Click to view products by [Samtec](#) manufacturer:*

Other Similar products are found below :

[892-18-020-10-001101](#) [58102-G61-06LF](#) [582553-1](#) [0009485154](#) [009176003701906](#) [0050291907](#) [LY20-4P-DT1-P1E-BR](#) [02.125.8002.8](#)  
[609-3404](#) [61062-3](#) [61082-181009](#) [622-3653LF](#) [63453-116](#) [636-1030](#) [636-1427](#) [636-3427](#) [636-4007](#) [641938-9](#) [641991-4](#) [644827-2](#) [65817-](#)  
[010LF](#) [65817-015LF](#) [65863-015LF](#) [66207-023LF](#) [67095-007LF](#) [67601157](#) [68645-018](#) [68648-049](#) [70.362.1628.0](#) [70-4210](#) [70-4226B](#) [70-](#)  
[4853B](#) [707-5020](#) [707-5028](#) [71.350.2428.0](#) [71918-208LF](#) [71961-016LF](#) [733-134](#) [733-162](#) [754199-000](#) [760-3052](#) [787-8014-00](#) [79531-3000](#)  
[FCN-360C032-B](#) [FCN-367T-T012/H](#) [FCN-723D010/2](#) [80.063.4001.1](#) [800-90-001-10-001000](#) [800-90-010-10-002000](#) [801-43-002-10-013000](#)