

IP67 SEALED 8 SERIES CABLE ASSEMBLY



MCP/MCR SERIES

MCP

Mates with:
MCR(K), MCP(K)

MCP Kit:
MCPK

MCR

Mates with:
MCP(K)

MCR Kit:
MCRK

MCP	8	LEAD STYLE	PLATING OPTION	LENGTH	END 1 OPTION	END 2 OPTION
		-02 = 12 positions, 28 AWG	-L = 10 μ" (0.25 μm) Gold on contact area	-01.00 = 1 meter -02.00 = 2 meters Standard lengths	-T = Terminal -S = Socket (Not available with End 2 -T)	-T = Terminal -S = Socket -BC = Blunt Cut

SPECIFICATIONS

Insulator Material:
PPS

Terminal Material:
Phosphor Bronze (MCR)

Contact Material:
Phosphor Bronze (MCR)

Operating Temp Range:
-20 °C to +80 °C

Gasket Material:
Silicone (MCP)
Neoprene Rubber (MCR)

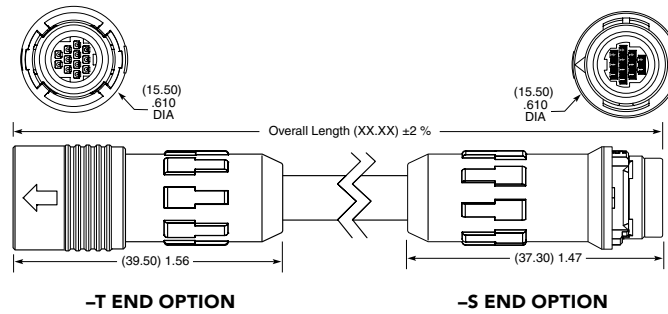
Spring Material:
Stainless Steel (MCP)

Coupling Ring Spacer:
PBT (MCP)

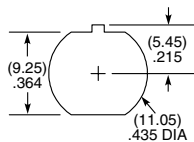
Cable Clamp:
POM (MCP)

Lock Washer:
Phosphor Bronze,
Ni plated (MCR)

Hex Nut:
Brass, Ni plated (MCR)



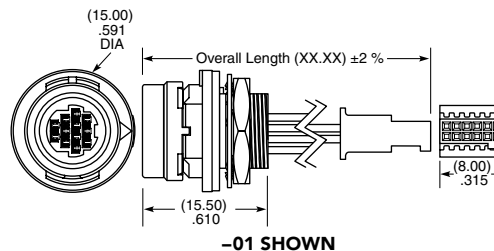
PANEL OPENING



MCR	8	LEAD STYLE	PLATING OPTION	LENGTH	END 1 OPTION	END 2 OPTION
		-02 = 12 positions, 28 AWG	-L = 10 μ" (0.25 μm) Gold on contact area	-00.25 = 0.25 meter -00.50 = 0.50 meter Standard lengths	-S = Socket	-BC = Blunt Cut (Color wire only, see chart) -01 = 2x6 SFSD (Pin 1 to Pin 1) (Black wire only)

-BC CABLE COLOR CODING

PIN	COLOR
1	BROWN
2	RED
3	ORANGE
4	YELLOW
5	GREEN
6	DARK BLUE
7	VIOLET
8	GRAY
9	WHITE
10	BLACK
11	GREEN/BLACK
12	TAN



DUST CAPS

-S (socket) = DCA-MCR-8
-T (terminal) = DCA-MCP-8

Notes:

Samtec's MCR, MCP Series is dual sourced by Hirose Electric Co. LTD

Some lengths, styles and options are non-standard, non-returnable

X-ON Electronics

Largest Supplier of Electrical and Electronic Components

Click to view similar products for [Sensor Cables / Actuator Cables](#) category:

Click to view products by [Samtec](#) manufacturer:

Other Similar products are found below :

[60963](#) [60964](#) [703000D02F2002](#) [703001D02F0602](#) [703001D02F300](#) [704000D02F120](#) [773032K02F030](#) [802027107404-1](#) [802027213811-1](#)
[804001A09M150](#) [805001A09M0502](#) [84914-0235](#) [84914-0237](#) [885030A09M020](#) [1200651332](#) [1200651713](#) [1200660844](#) [1200660845](#)
[1200661173](#) [1200680071](#) [1200720053](#) [1200720081](#) [1200720099](#) [1200720217](#) [1200800231](#) [1200860125](#) [1200870123](#) [1200980102](#)
[1200650267](#) [1200650298](#) [1200660183](#) [1200660782](#) [1200660849](#) [1200661295](#) [1200661297](#) [1200661342](#) [1200661343](#) [1200670080](#)
[1200670220](#) [1200680331](#) [1200720252](#) [1200730184](#) [1200860344](#) [1200870359](#) [1200870643](#) [1200980008](#) [1200980031](#) [1210502211](#)
[1210400542](#) [1211810021](#)