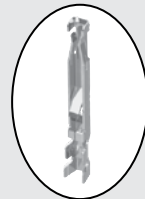




ACCLIMATE™

MCRK-8-S



CC393-2830-L-S

MCRK, CC393 SERIES

8 SERIES IP67 FIELD TERMINATION KIT

Mates with:
MCP(K)

SPECIFICATIONS

For complete specifications see www.samtec.com?MCRK

Insulator Material:
PPS

Contact Material:
Phosphor Bronze

Operating Temp Range:
-20 °C to +80 °C

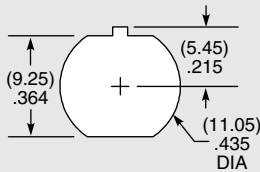
Gasket Material:
Neoprene Rubber

Lock Washer:
Phosphor Bronze, Ni plated

Hex Nut:
Brass, Ni plated

RoHS Compliant:
Yes

PANEL OPENING



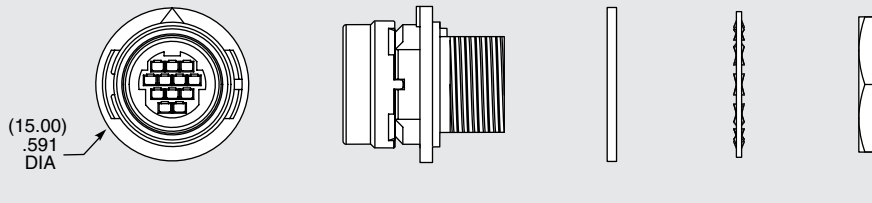
Note: Samtec's MCRK Series is dual sourced by Hirose Electric Co., LTD.



DUST CAPS

- DCA-MCR-8

Visit sealedio.samtec.com for a complete list of sealed systems



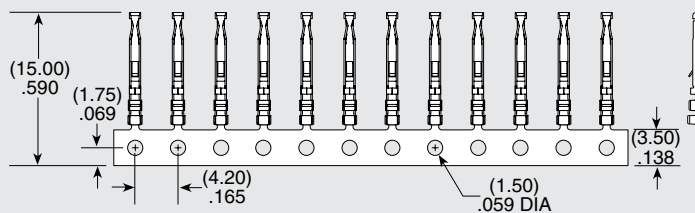
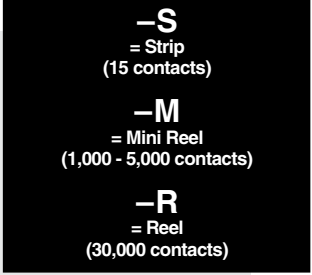
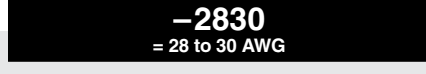
SPECIFICATIONS

For complete specifications see www.samtec.com?CC393

Plating:
10 μm (0.25 μm) Gold on contact

TOOLING

- Hand Tool:
CAT-HT-393-2430-13
- Mini Applicator
(28-30 AWG):
CAT-MC-393-2830-XX-01
- Extraction Tool:
CAT-EX-MCX-8-01



X-ON Electronics

Largest Supplier of Electrical and Electronic Components

Click to view similar products for [Sensor Cables / Actuator Cables](#) category:

Click to view products by [Samtec](#) manufacturer:

Other Similar products are found below :

[60963](#) [60964](#) [703000D02F2002](#) [703000D02F300](#) [703001D02F0602](#) [703001D02F300](#) [704000D02F120](#) [773032K02F030](#) [802027107404-1](#)
[804001A09M150](#) [805001A09M0502](#) [84914-0235](#) [84914-0237](#) [885030A09M020](#) [1200651332](#) [1200651713](#) [1200660844](#) [1200660845](#)
[1200661173](#) [1200680071](#) [1200720053](#) [1200720081](#) [1200720099](#) [1200720217](#) [1200800231](#) [1200860125](#) [1200870123](#) [1200980102](#)
[1200650267](#) [1200650298](#) [1200660183](#) [1200660782](#) [1200660849](#) [1200661295](#) [1200661297](#) [1200661342](#) [1200661343](#) [1200670080](#)
[1200670220](#) [1200680331](#) [1200720252](#) [1200730184](#) [1200860344](#) [1200870359](#) [1200870643](#) [1200980008](#) [1200980031](#) [1210502211](#)
[1210400542](#) [1211810021](#)