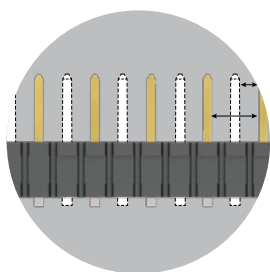


HIGH-POWER SYSTEMS

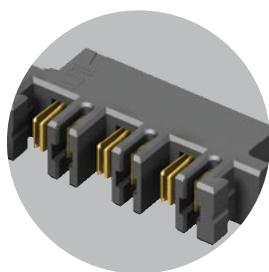
20-60 A
per blade

FEATURES & BENEFITS

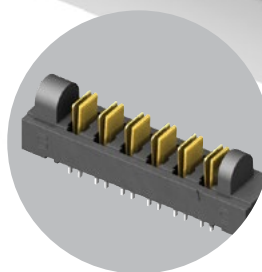
- Current Rating: 23 A - 58.7 A per power blade
- 3.81 mm, 5.00 mm and 6.35 mm pitch
- Dual blade contact system
- Power only or power/signal combinations available
- Right-angle and vertical orientations
- Rugged screw down and locking clip options
- Discrete wire cable assembly with 10-16 AWG wire
- "Hinged" for unique mating in any orientation from 0° to 90° and space confined applications



Selectively loading contacts achieves customer specific creepage and clearance requirements.



Hermaphroditic options available (samtec.com?MPPT)



Hinging options available (samtec.com?FMPT samtec.com?FMPS)

KEY SPECIFICATIONS

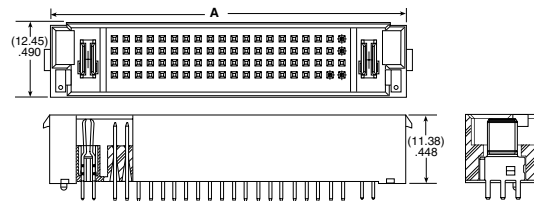
| SERIES | PET/PES | PETC/PESC | MPT/MPS | MPTC/MPSC | UPT/UPS | FMPT/FMPS | UPPT | MPPT |
|---------------|-----------------|--|------------------|--|-----------------|------------------|-----------------|------------------|
| PITCH | (6.35 mm) .250" | (6.35 mm) .250" (pwr) (2.54 mm) .100" (sig) | (5.00 mm) .1969" | (5.00 mm) .197" (pwr) (2.00 mm) .079" (sig) | (3.81 mm) .150" | (5.00 mm) .1969" | (3.81 mm) .150" | (5.00 mm) .1969" |
| CCC (1 PIN)* | 58.7 A | 31.4 A | 28.8 A | 28.8 A | 23 A | 26.7 A | 21.4 A | 23.3 A |
| CCC (2 PINS)* | 48.5 A | 28.0 A | 24.7 A | 24.7 A | 18.6 A | 22.9 A | 19.8 A | 20.5 A |
| CCC (3 PINS)* | 41.1 A | 24.4 A | 24.1 A | 24.1 A | 17.5 A | 19.1 A | 17.1 A | 19.4 A |
| CREEPAGE | (3.66 mm) .144" | (3.66 mm) .144" | (2.86 mm) .113" | (2.86 mm) .113" | (5.5 mm) .217" | (6.53 mm) .257" | (1.91 mm) .075" | (2.95 mm) .116" |
| CLEARANCE | (3.31 mm) .130" | (3.31 mm) .130" | (2.71 mm) .106" | (2.71 mm) .106" | (1.51 mm) .059" | (2.71 mm) .106" | (1.51 mm) .059" | (2.71 mm) .106" |
| VAC | 725 VAC | Signal: 450 VAC Power: 650 VAC | 575 VAC | 250 VAC | 438 VAC | 525 VAC | 425 VAC | 600 VAC |
| VDC | 1025 VDC | Signal: 636 VDC Power: 919 VDC | 812 VDC | 354 VDC | 620 VDC | 742 VDC | 600 VDC | 848 VDC |
| CYCLES | 100 | 100 | 100 | 100 | 25 | 100 | 100 | 100 |

(5.00 mm) .197"(PWR) / (2.00 mm) .079"(SIG) • 30 A SIGNAL/POWER COMBO SYSTEMS

| SERIES | POWER PINS | SIGNAL PINS | POWER PINS | LEAD STYLE | TAIL LENGTH | PLATING OPTION | V | OTHER OPTION |
|-------------------------|----------------|-------------|----------------|---|---|--|---|--|
| MPTC Terminal | Per end -01 | -16 -24 | Per end -01 | -6.30 = (6.30 mm) 0.248" (MPTC only) | -01 = Use with (1.60 mm) .062" Thick PCB | -L = 10 μ" (0.25 μm) Gold on contact, Matte Tin on tail (Power & Signal) | | -LC = Locking Clip (Manual placement required) |
| MPSC Socket | -02 | -40 -80 | -02 | -7.70 = (7.70 mm) 0.303" (MPSC only) | -03 = Use with (2.36 mm) .093" Thick PCB | -T = Matte tin on contact and tail (power), Gold on contact, Matte tin on tail (Signal) | | |

MPTC

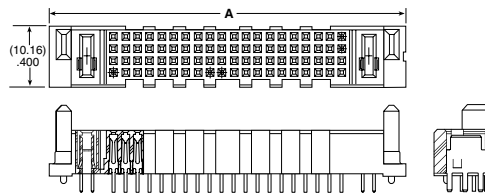
Board Mates:
MPSC
Cable Mates:
MPCC



| POWER PINS/ENDS | A | | | |
|-----------------|------------------|------------------|------------------|------------------|
| | 16 SIGNAL PINS | 24 SIGNAL PINS | 40 SIGNAL PINS | 80 SIGNAL PINS |
| -01 | (27.44) 1.081 | (31.45) 1.238 | (39.44) 1.553 | (59.44) 2.340 |
| -02 | (37.44) 1.474 | (41.45) 1.632 | (49.44) 1.946 | (69.44) 2.734 |

MPSC

Board Mates:
MPTC

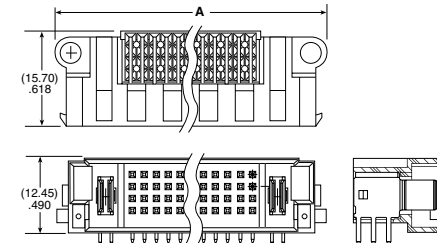


View complete specifications at: samtec.com?MPTC & samtec.com?MPSC

| SERIES | POWER PINS | SIGNAL PINS | POWER PINS | 01 | TAIL LENGTH | PLATING OPTION | RA | OTHER OPTION |
|-------------------------|----------------|-------------|----------------|----|---|---|----|--|
| MPTC Terminal | Per end -01 | -24 -80 | Per end -01 | | -01 = Use with (1.60 mm) .062" Thick PCB | -L = 10 μ" (0.25 μm) Gold on contact, Matte Tin on tail (Power & Signal) | | -SD or -LC is a required callout |
| MPSC Socket | -02 | | -02 | | -03 = Use with (2.36 mm) .093" Thick PCB | -T = Matte Tin on contact and tail (power), Gold on contact, Matte tin on tail (Signal) | | -SD = Screw Down -LC = Locking Clip (Manual placement required) |

MPTC-RA

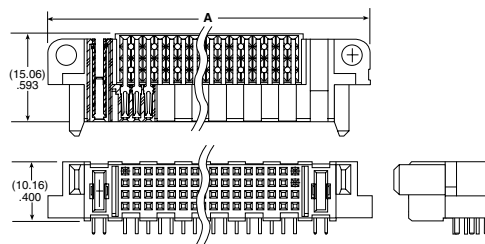
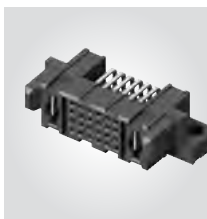
Board Mates:
MPSC
Cable Mates:
MPCC



| POWER PINS/ENDS | A | |
|-----------------|----------------|----------------|
| | 24 SIGNAL PINS | 80 SIGNAL PINS |
| -01 | (35.25) 1.388 | (63.25) 2.490 |
| -02 | (45.25) 1.781 | (73.25) 2.884 |

MPSC-RA

Board Mates:
MPTC



| POWER PINS/ENDS | A | |
|-----------------|----------------|----------------|
| | 24 SIGNAL PINS | 80 SIGNAL PINS |
| -01 | (36.25) 1.438 | (64.25) 2.540 |
| -02 | (46.25) 1.831 | (74.25) 2.934 |

View complete specifications at: samtec.com?MPTC & samtec.com?MPSC

Note: Some lengths, styles and options are non-standard, non-returnable

X-ON Electronics

Largest Supplier of Electrical and Electronic Components

Click to view similar products for [Heavy Duty Power Connectors](#) category:

Click to view products by [Samtec](#) manufacturer:

Other Similar products are found below :

[6646058-2](#) [6646137-1](#) [6646138-1](#) [6646940-1](#) [6651091-1](#) [6651525-1](#) [6651529-1](#) [696475-1](#) [702-32-01109](#) [73080255059](#) [73080965046](#)
[7310205040001](#) [765-16-0080B](#) [765-18-0080D](#) [902-77-02113](#) [PS00/A0620/6300](#) [AN0024023](#) [154-42B7WM250](#) [MS3117-14AC](#) [1643543-1](#)
[1766966-1](#) [1791340000](#) [NLDFT-3-BL-L-S120-M40A](#) [NLDFT-N-W-L-C240-M40B](#) [1926015-1](#) [NLS-3-BL-C240-M40B](#) [NLS-N-W-C240-](#)
[M40B](#) [NPS-3-BL-T6](#) [2-1589900-8](#) [9300480317](#) [294-0091-01100](#) [296-0040-01100](#) [1-6609148-0](#) [A32595-0049](#) [1766249-1](#) [19000005132](#)
[1926016-1](#) [1-966831-8](#) [AN0024202](#) [AN0264023](#) [279-0841-10100A](#) [281-0334-00100A](#) [RMSB4](#) [419-2083-301](#) [LCDX4/0-14B-X](#) [075-8519-](#)
[001](#) [078238-1613](#) [07.470.3256.0](#) [09000005288](#) [09140240311](#)