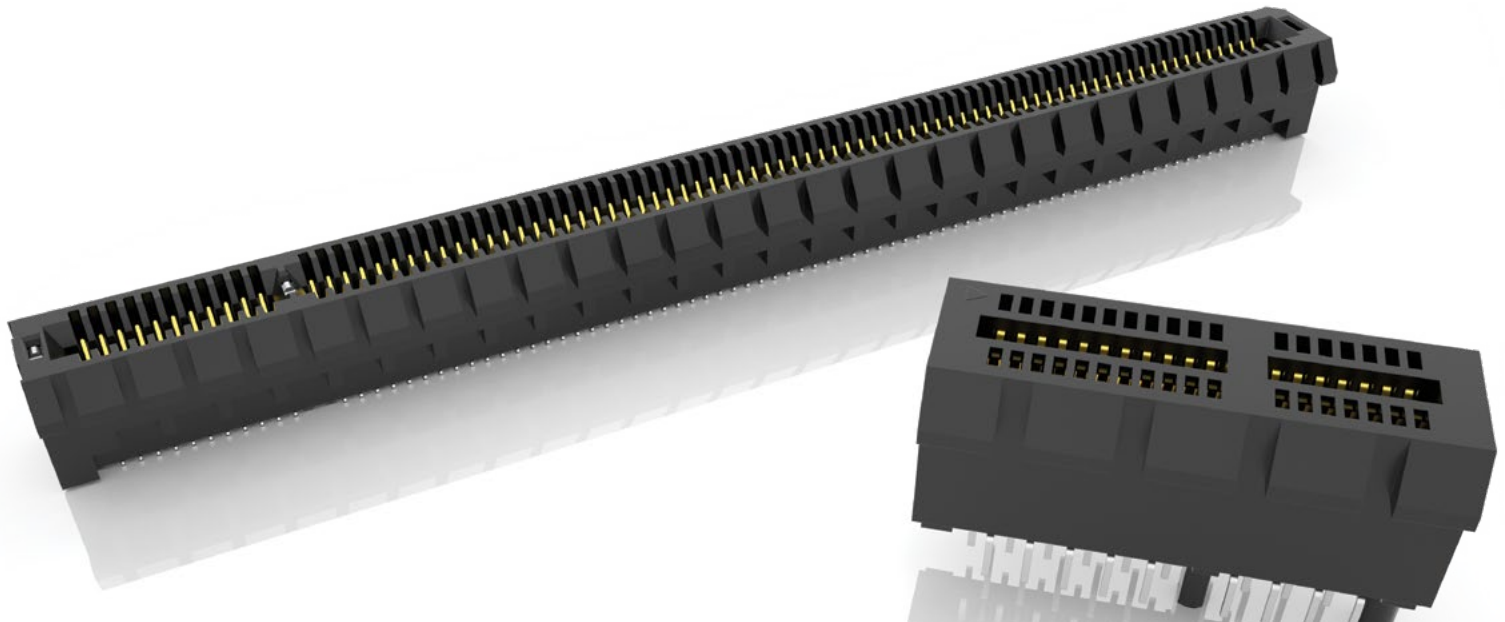




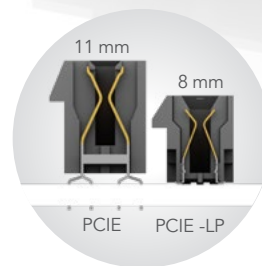
PCI EXPRESS® EDGE CARD SOCKETS

(1.00 mm) .0394" PITCH



FEATURES & BENEFITS

- 1.00 mm pitch
- Supports 1, 4, 8 and 16 PCI Express® links
- PCIe® 3.0 Solution (PCI-E)
- PCIe® 4.0 Solution with low profile design for space savings (PCI-E-LP)
- PCIe® 4.0 with slim body design (PCI-E-G4)
- PCIe® 5.0 Solution with differential pair signaling (PCI-E-G5)
- Vertical, right-angle and edge mount
- Mates with .062" (1.60 mm) thick cards
- Alignment pin and weld tab options



PCI-E® 3.0 & 4.0
Edge Card
connectors



PCI-E® 4.0 slim body
socket with Edge Rate®
contacts (PCI-E-G4)

KEY SPECIFICATIONS

SERIES	TOTAL PINS (LANES)	INSULATOR MATERIAL	CONTACT MATERIAL	OPERATING TEMP RANGE	CURRENT RATING	VOLTAGE RATING	PCI-E® COMPATIBILITY
PCI-E	36 (x1), 64 (x4), 98 (x8), 164 (x16)	-TH = Black Nylon -EMS2 & -TH = LCP	Phosphor Bronze	-55 °C to +125 °C	2.4 A (2 pins)	215 VAC	3.0
PCI-E-LP	36 (x1), 64 (x4), 98 (x8), 164 (x16)	LCP	Phosphor Bronze	-55 °C to +125 °C	2.1 A (2 pins)	215 VAC	4.0
PCI-E-G4	36 (x1), 64 (x4), 98 (x8), 164 (x16)	LCP	Copper Alloy	-55 °C to +125 °C	2.2 A (2 pins)	300 VAC	4.0
PCI-E-G5	36 (x1), 64 (x4), 98 (x8), 164 (x16)	LCP	Copper Alloy	-55 °C to +125 °C	3.2 A (2 pins)	235 VAC	5.0

(1.00 mm) .0394" PITCH • PCI EXPRESS® 4.0 SOCKET

PCIE	G4	NUMBER OF LANES	01	PLATING OPTION	DV	OPTION 1	OPTION 2	PACKAGING
------	----	-----------------	----	----------------	----	----------	----------	-----------

-01, -04,
-08, -16

-F
= Gold flash on contact, Matte Tin on tail

-S
= 30 μ" (0.76 μm) Gold on contact, Matte Tin on tail

-A
= Alignment Pin (Not available with -WT)

-WT
= Weld Tab (Not available with -A)

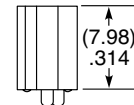
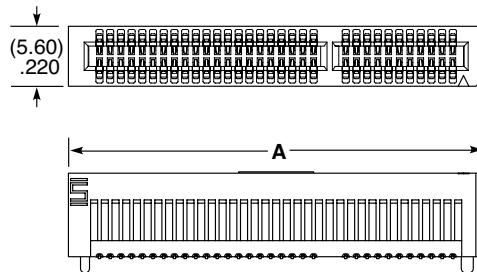
-K
= (7.00 mm) .275" DIA Polyimide Pick & Place Pad

(For -16 lanes only leave blank for Tray Packaging)

-TR
= Tape & Reel ("X"R required with -01, -04, -08 lanes)

-FR
= Full Reel Tape & Reel (must order max. quantity per reel; contact Samtec for quantity breaks) ("X"R required with -01, -04, -08 lanes)

PCIE-G4
Card Mates:
(1.60 mm)
.062" card



NUMBER OF LANES	A
-01	(24.80) .976
-04	(38.80) 1.528
-08	(55.80) 2.197
-16	(88.80) 3.496

View complete specifications at: samtec.com?PCIE-G4

(1.00 mm) .0394" PITCH • PCI EXPRESS® 5.0 SOCKET

PCIE	G5	NUMBER OF LANES	01	PLATING OPTION	TYPE	OPTION	PACKAGING
------	----	-----------------	----	----------------	------	--------	-----------

-01, -04,
-08, -16

-F
= Gold flash on contact, Matte Tin on tail

-S
= 30 μ" (0.76 μm) Gold on contact, Matte Tin on tail

-DP-A
= Vertical

-EM
= Edge Mount

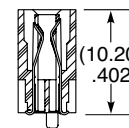
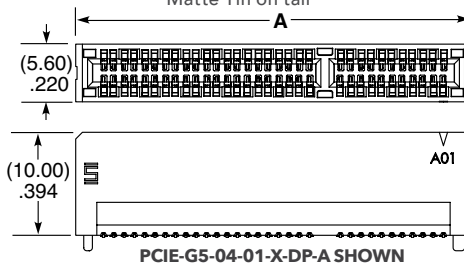
-WT
= Weld Tab

(For -16 lanes only leave blank for Tray Packaging)

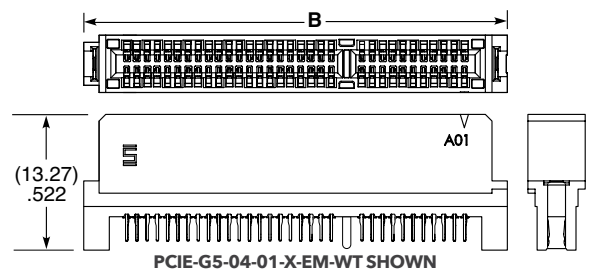
-TR
= Tape & Reel ("X"R required with -01, -04, -08 lanes)

-FR
= Full Reel Tape & Reel (must order max. quantity per reel; contact Samtec for quantity breaks) ("X"R required with -01, -04, -08 lanes)

PCIE-G5
Card Mates:
(1.60 mm)
.062" card



NUMBER OF LANES	A	B
-01	(24.40) .961	(27.40) 1.079
-04	(38.40) 1.512	(41.40) 1.630
-08	(55.40) 2.181	(58.40) 2.299
-16	(88.40) 3.480	(91.40) 3.598



PCI-SIG®, PCI Express® and the PCIe® design marks are registered trademarks and/or service marks of PCI-SIG.

Note:
Some lengths, styles and options are non-standard, non-returnable.

View complete specifications at: samtec.com?PCIE-G5

X-ON Electronics

Largest Supplier of Electrical and Electronic Components

Click to view similar products for [PCI Express/PCI Connectors](#) category:

Click to view products by [Samtec](#) manufacturer:

Other Similar products are found below :

[PCIEEXT16HOT](#) [UEX220-6U](#) [10025026-10003PLF](#) [10125756-980000LF](#) [GPCP442628110HR](#) [GPCP245400111HR](#) [10082378-10000TLF](#)
[MDT580M03001](#) [MPE-D-52-R-SMT-9.2-TR](#) [2041216-1](#) [MDT580M01001](#) [10141523-111T0LF](#) [10146070-112Y0LF](#) [10150657-052R0LF](#)
[1759513-1](#) [10018784-10001MLF](#) [10082378-10213TLF](#) [10123920-A20LF](#) [10124928-001LF](#) [10125101-A15RLF](#) [10125101-A30RLF](#)
[10125756-642010LF](#) [10125756-A42010LF](#) [1612257-7](#) [1-1612257-2](#) [10146065-112Y0LF](#) [10125756-A40010LF](#) [10151114-001TLF](#)
[SM3ZS067U215AMR1500](#) [PCIE-G4-01-01-F-DV-WT-K-TR](#) [10146070-113X0LF](#) [10124782-00002TLF](#) [MDT320M01004](#) [MDT420E01411](#)
[MDT580M01003](#) [10146070-123X0LF](#) [G03V21322HR](#) [G97V21312HR](#) [G98V1H342HR](#) [G97V21332HR](#) [G42V11342HR](#) [G97V24332HR](#)
[G98V11312HR](#) [G97V26332HR](#) [G97R24322HR](#) [G97R21312HR](#) [G97V24352HR](#) [G97V22313HR](#) [G42V14322HR](#) [G97R21322HR](#)