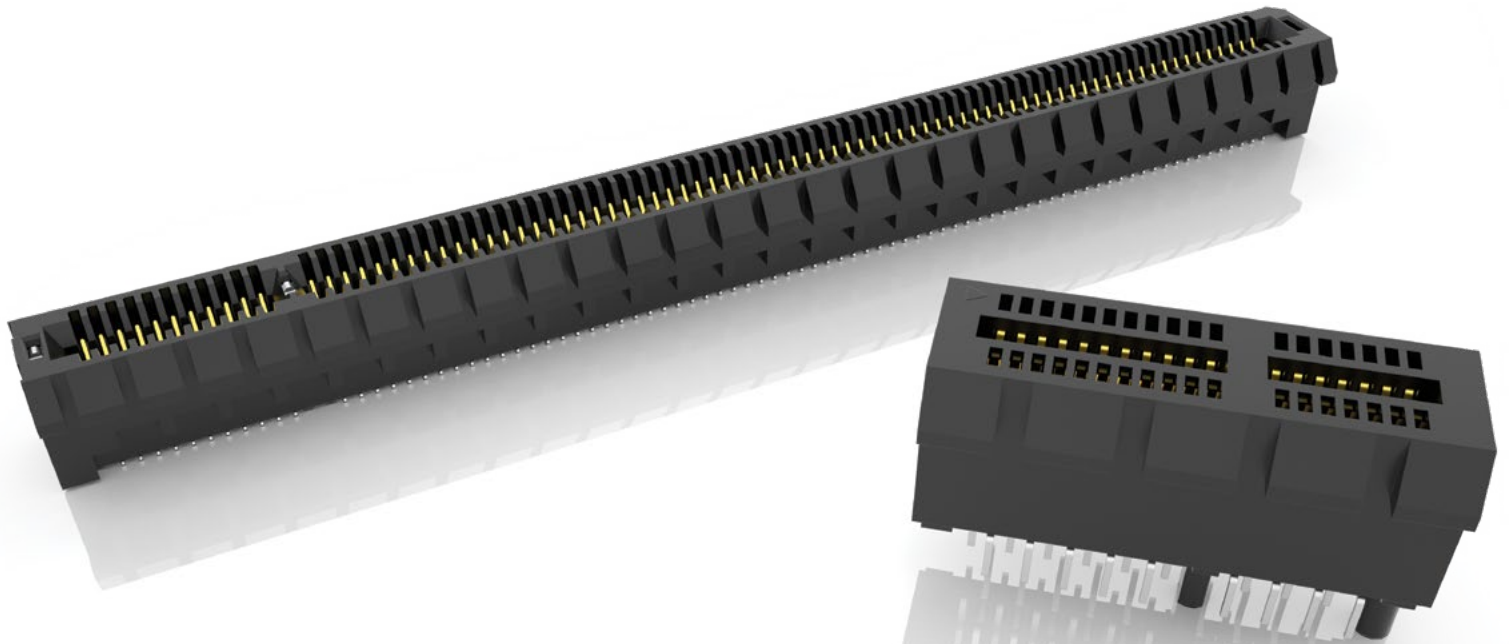




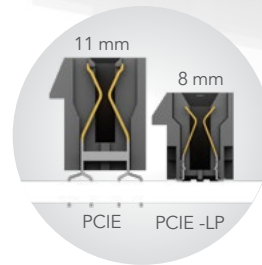
# PCI EXPRESS® EDGE CARD SOCKETS

(1.00 mm) .0394" PITCH



## FEATURES & BENEFITS

- 1.00 mm pitch
- Supports 1, 4, 8 and 16 PCI Express® links
- PCIe® 3.0 Solution (PCIe)
- PCIe® 4.0 Solution with low profile design for space savings (PCIe-LP)
- PCIe® 4.0 with slim body design (PCIe-G4)
- PCIe® 5.0 Solution with differential pair signaling (PCIe-G5)
- Vertical, right-angle and edge mount
- Mates with .062" (1.60 mm) thick cards
- Alignment pin and weld tab options



PCIe® 3.0 & 4.0  
Edge Card  
connectors



PCIe® 4.0 slim body  
socket with Edge Rate®  
contacts (PCIe-G4)

## KEY SPECIFICATIONS

SERIES	TOTAL PINS (LANES)	INSULATOR MATERIAL	CONTACT MATERIAL	OPERATING TEMP RANGE	CURRENT RATING	VOLTAGE RATING	PCIe® COMPATIBILITY
PCIe	36 (x1), 64 (x4), 98 (x8), 164 (x16)	-TH = Black Nylon -EMS2 & -TH = LCP	Phosphor Bronze	-55 °C to +125 °C	2.4 A (2 pins)	215 VAC	3.0
PCIe-LP	36 (x1), 64 (x4), 98 (x8), 164 (x16)	LCP	Phosphor Bronze	-55 °C to +125 °C	2.1 A (2 pins)	215 VAC	4.0
PCIe-G4	36 (x1), 64 (x4), 98 (x8), 164 (x16)	LCP	Copper Alloy	-55 °C to +125 °C	2.2 A (2 pins)	300 VAC	4.0
PCIe-G5	36 (x1), 64 (x4), 98 (x8), 164 (x16)	LCP	Copper Alloy	-55 °C to +125 °C	3.2 A (2 pins)	235 VAC	5.0

**(1.00 mm) .0394" PITCH • PCI EXPRESS® 4.0 SOCKET**

PCIE	G4	NUMBER OF LANES	01	PLATING OPTION	DV	OPTION 1	OPTION 2	PACKAGING
------	----	-----------------	----	----------------	----	----------	----------	-----------

-01, -04,  
-08, -16

**-F**  
= Gold flash on contact, Matte Tin on tail

**-S**  
= 30 μ" (0.76 μm) Gold on contact, Matte Tin on tail

**-A**  
= Alignment Pin (Not available with -WT)

**-WT**  
= Weld Tab (Not available with -A)

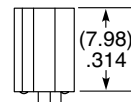
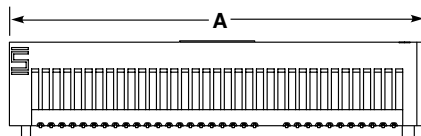
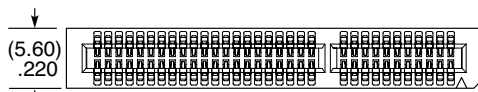
**-K**  
= (7.00 mm) .275" DIA Polyimide Pick & Place Pad

(For -16 lanes only leave blank for Tray Packaging)

**-TR**  
= Tape & Reel ("X"R required with -01, -04, -08 lanes)

**-FR**  
= Full Reel Tape & Reel (must order max. quantity per reel; contact Samtec for quantity breaks) ("X"R required with -01, -04, -08 lanes)

**PCIE-G4**  
Card Mates:  
(1.60 mm)  
.062" card



NUMBER OF LANES	A
-01	(24.80) .976
-04	(38.80) 1.528
-08	(55.80) 2.197
-16	(88.80) 3.496

View complete specifications at: [samtec.com?PCIE-G4](http://samtec.com?PCIE-G4)

**(1.00 mm) .0394" PITCH • PCI EXPRESS® 5.0 SOCKET**

PCIE	G5	NUMBER OF LANES	01	PLATING OPTION	TYPE	OPTION	PACKAGING
------	----	-----------------	----	----------------	------	--------	-----------

-01, -04,  
-08, -16

**-F**  
= Gold flash on contact, Matte Tin on tail

**-S**  
= 30 μ" (0.76 μm) Gold on contact, Matte Tin on tail

**-DP-A**  
= Vertical

**-EM**  
= Edge Mount

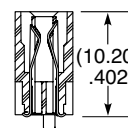
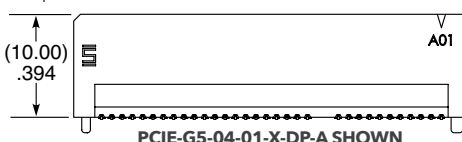
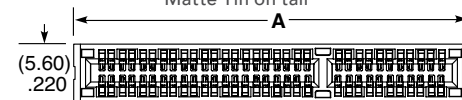
**-WT**  
= Weld Tab

(For -16 lanes only leave blank for Tray Packaging)

**-TR**  
= Tape & Reel ("X"R required with -01, -04, -08 lanes)

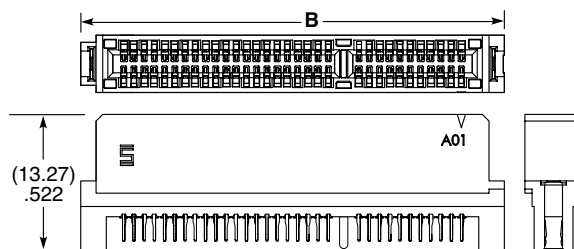
**-FR**  
= Full Reel Tape & Reel (must order max. quantity per reel; contact Samtec for quantity breaks) ("X"R required with -01, -04, -08 lanes)

**PCIE-G5**  
Card Mates:  
(1.60 mm)  
.062" card



PCIE-G5-04-01-X-DP-A SHOWN

NUMBER OF LANES	A	B
-01	(24.40) .961	(27.40) 1.079
-04	(38.40) 1.512	(41.40) 1.630
-08	(55.40) 2.181	(58.40) 2.299
-16	(88.40) 3.480	(91.40) 3.598



PCIE-G5-04-01-X-EM-WT SHOWN

PCI-SIG®, PCI Express® and the PCIe® design marks are registered trademarks and/or service marks of PCI-SIG.

**Note:**  
Some lengths, styles and options are non-standard, non-returnable.

View complete specifications at: [samtec.com?PCIE-G5](http://samtec.com?PCIE-G5)

## X-ON Electronics

Largest Supplier of Electrical and Electronic Components

*Click to view similar products for [PCI Express/PCI Connectors](#) category:*

*Click to view products by [Samtec](#) manufacturer:*

Other Similar products are found below :

[PCIEEXT16HOT](#) [UEX220-6U](#) [10025026-10003PLF](#) [10125756-980000LF](#) [GPCP442628110HR](#) [GPCP245400111HR](#) [10082378-10000TLF](#)  
[MDT580M03001](#) [MPE-D-52-R-SMT-9.2-TR](#) [2041216-1](#) [MDT580M01001](#) [10141523-111T0LF](#) [10146070-112Y0LF](#) [10150657-052R0LF](#)  
[1759513-1](#) [10082378-10213TLF](#) [10123920-A20LF](#) [10124928-001LF](#) [10125101-A15RLF](#) [10125101-A30RLF](#) [10125756-642010LF](#)  
[10125756-A42010LF](#) [1612257-7](#) [1-1612257-2](#) [10125756-A40010LF](#) [10151114-001TLF](#) [SM3ZS067U215AMR1500](#) [10146070-113X0LF](#)  
[MDT320M01004](#) [MDT580M01003](#) [10146070-123X0LF](#) [MDT420STD001](#) [10146070-113B0LF](#) [10146069112X0LF](#) [1-1734774-2](#) [63010](#)  
[74540-0201](#) [74540-0501](#) [7-1734774-7](#) [3-1761465-1](#) [10039755-10111TLF](#) [10039755-10112TLF](#) [10018783-10211TLF](#) [10018784-10212TLF](#)  
[1761465-2](#) [87715-9202](#) [87715-9208](#) [1871058-1](#) [5-1761465-4](#) [10018783-10200MLF](#)