

# 1.00 mm TO 110 GHz

## 1.00 mm Cable Connectors PRF10

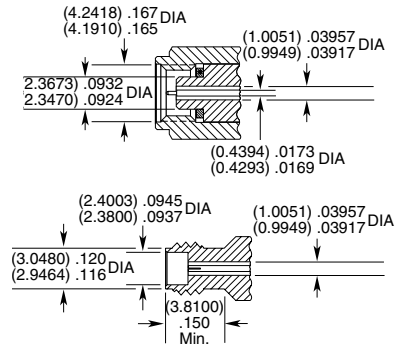


### CONNECTORS FOR INDUSTRY STANDARD CABLES

PRF10-J-C-VP-047D-SS	.047, semi-rigid
PRF10-P-C-VP-047D-SS	.047, semi-rigid

J-C = Cable Jack  
 P-C = Cable Plug  
 VP = Plating (75 μ" Gold center contact, passivated outer contact)  
 SS = Straight, Solder Clamp

### INTERFACE STANDARD



# 1.35 mm TO 90 GHz

## 1.35 mm Cable Assemblies RF047-A



### SERIES

**RF047-A**  
 = (1.2 mm) .047" overshield DIA  
 29 AWG millimeter wave cable

### END 1 CONNECTOR

**-13SJ**  
 = 1.35 mm Straight Jack

### END 2 CONNECTOR

**-13SP**  
 = 1.35 mm Straight Plug

### OVERALL LENGTH

**-"XXXX"**  
 = Overall Length in millimeters  
 -0100 (0100 mm) 3.94" minimum

### ALSO AVAILABLE

1.85 mm, 2.40 mm, 2.92 mm, SMPM = RF047-A

### VSWR

Contact Samtec

## 1.35 mm Cable Connectors PRF13

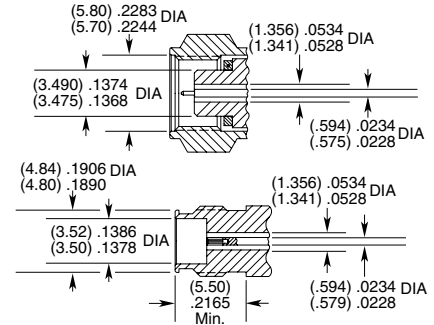


### CONNECTORS FOR INDUSTRY STANDARD CABLES

PRF13-P-C-VP-047A-SS	.047 Temp-Flex, low loss flexible, 29 AWG
PRF13-J-C-VP-047A-BS	.047 Temp-Flex, low loss flexible, 29 AWG

P-C = Cable Plug  
 J-C = Cable Jack  
 VP = Plating (75 μ" Gold center contact, passivated outer contact)  
 SS = Straight, Solder Clamp  
 BS = Bulkhead, Solder Clamp

### INTERFACE STANDARD



## 1.35 mm Board Connectors 135

Cable Mates:  
RF047-A



### 135

### GENDER

**-J**  
 = Jack

### TYPE

**-P**  
 = PCB Mount

### PLATING

**-VP**  
 = Plating (75 μ" gold center contact, passivated outer contact)

### ORIENTATION

**-ST**  
 = Straight

### TERMINATION

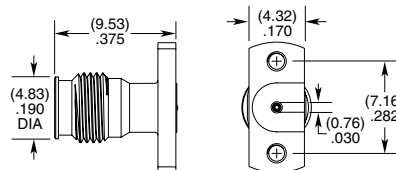
**-CM**  
 = Compression Mount

**-CMM**  
 = Compression Mount Microstrip

### OPTION

**-1**  
 = Without screws

**-2**  
 = With screws



## X-ON Electronics

Largest Supplier of Electrical and Electronic Components

*Click to view similar products for [RF Connectors / Coaxial Connectors](#) category:*

*Click to view products by [Samtec](#) manufacturer:*

Other Similar products are found below :

[8915-1511-000](#) [89674-0827](#) [6001-7071-019](#) [6002-7051-003](#) [6059674-1](#) [619550-1](#) [630059-000](#) [M39030/3-01N](#) [6769](#) [CX050L2AQ](#) [7002-1541-010](#) [7002-1542-011](#) [7002-1572-002](#) [7003-1542-011](#) [7004-1512-000](#) [7009-1511-004](#) [7010-1511-000](#) [7029-1511-060](#) [7101-1541-010](#) [7101-1571-002](#) [7145-1521-002](#) [7203-1571-003](#) [7209-1511-011](#) [7210-1511-015](#) [7210-1511-019](#) [73137-5015](#) [73216-2241](#) [73404-2300](#) [7405-1521-005](#) [7405-1521-802](#) [8527](#) [8547](#) [FS11V](#) [9049-9513-000](#) [9074-9513-000](#) [9101-9573-002](#) [910A205F](#) [9130-9573-002](#) [PL11SC-026](#) [PL375-33](#) [PL40-5](#) [PL74C-221](#) [PL75MC-217](#) [PL803-7](#) [980-8666-005](#) [1200690078](#) [1-201144-1](#) [R107003010W](#) [R110A172100](#) [R112186000](#)