

## 1.85 mm TO 65 GHz

### 1.85 mm Cable Assemblies

RF047-A, RF086



VSWR

RF047-A: 1.40 max.  
RF086: 1.40 max.

SERIES	END 1 CONNECTOR	END 2 CONNECTOR	OVERALL LENGTH
<b>RF047-A</b> = (1.2 mm) .047" overshield DIA 29 AWG millimeter wave cable  <b>RF086</b> = (2.18 mm) .086" overshield DIA 23 AWG millimeter wave cable	<b>-18SJ</b> = 1.85 mm Straight Jack  <b>-18SP</b> = 1.85 mm Straight Plug		<b>-“XXXX”</b> = Overall Length in millimeters  -0100 (0100 mm) 3.94" minimum
<b>ALSO AVAILABLE</b>			
2.40 mm, SMPM, 2.92 mm = RF086			
1.35 mm, 2.40 mm, SMPM, 2.92 mm = RF047-A			

### 1.85 mm Cable Connectors

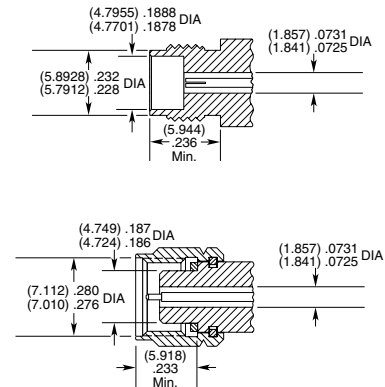
PRF18



CONNECTORS FOR INDUSTRY STANDARD CABLES	
PRF18-J-C-EP-047D-SS	.047, semi-rigid
PRF18-P-C-EP-047D-SS	.047, semi-rigid
PRF18-J-C-EP-086-SS	.086 Temp-Flex, low loss flexible
PRF18-P-C-EP-086-SS	.086 Temp-Flex, low loss flexible
PRF18-J-C-EE-405-SD	RG 405, .085, semi-rigid
PRF18-J-C-EP-085-BS	Harbour SS405, flexible alternative to RG 405
PRF18-P-C-EE-085-SD	Harbour SS405, flexible alternative to RG 405
PRF18-P-C-EP-085-SS	Harbour SS405, flexible alternative to RG 405
PRF18-P-C-EP-047A-SS	.047 Temp-Flex, low loss flexible, 29 AWG
PRF18-J-C-EP-047A-SS	.047 Temp-Flex, low loss flexible, 29 AWG

P-C = Cable Plug  
 J-C = Cable Jack  
 EE = Plating (50 μ" gold center contact, & outer contact)  
 EP = Plating (50 μ" gold center contact, passivated outer contact)  
 SS = Straight, Solder Clamp  
 SD = Straight, Direct Solder  
 BS = Bulkhead, Solder Clamp

#### INTERFACE STANDARD



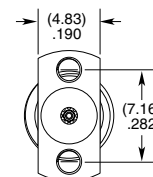
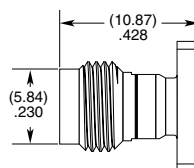
### 1.85 mm Board Connectors

185

Cable Mates:  
RF047-A, RF086



185	GENDER	TYPE	PLATING	ORIENTATION	TERMINATION	OPTION
	-J = Jack	-P = PCB Mount	-EP = 50 μ" (1.27 μm) Gold center contact, Passivated outer contact	-ST = Straight	-CM = Compression Mount Stripline  -CMM = Compression Mount Microstrip	-1 = Without Screws  -2 = With Screws



## X-ON Electronics

Largest Supplier of Electrical and Electronic Components

*Click to view similar products for [RF Connectors](#) / [Coaxial Connectors](#) category:*

*Click to view products by [Samtec](#) manufacturer:*

Other Similar products are found below :

[8915-1511-000](#) [89674-0827](#) [6001-7071-019](#) [6002-7051-003](#) [6002-7551-202](#) [6059674-1](#) [619550-1](#) [630059-000](#) [M39030/3-01N](#) [6500-7071-046](#) [6769](#) [CX050L2AQ](#) [7002-1541-010](#) [7002-1542-011](#) [7004-1512-000](#) [7009-1511-004](#) [7010-1511-000](#) [7029-1511-060](#) [7101-1541-010](#) [7101-1571-002](#) [7145-1521-002](#) [7203-1571-003](#) [7209-1511-011](#) [7210-1511-015](#) [7210-1511-019](#) [73137-5015](#) [73216-2241](#) [73404-2300](#) [7405-1521-005](#) [7405-1521-802](#) [8527](#) [8547](#) [FS11V](#) [877931](#) [8808-1511-001](#) [9074-9513-000](#) [9101-9573-002](#) [910A205F](#) [9130-9573-002](#) [PL11SC-026](#) [PL375-33](#) [PL40-5](#) [PL74C-221](#) [PL75MC-217](#) [PL803-7](#) [1200690078](#) [1-201144-1](#) [R107003010W](#) [R110A172100](#) [R112186000](#)