

3.50 mm TO 34 GHz

3.50 mm Cable Assemblies RF23S



VSWR

RF23S: 1.30 max

SERIES

RF23S
= MWC-2350-01 microwave cable with 23 AWG solid FEP Dielectric

END 1 CONNECTOR

-35SJP
= 3.50 mm Straight Jack
-35SPP
= 3.50 mm Straight Plug

END 2 CONNECTOR

OVERALL LENGTH

-"XXXX"
= Overall Length in millimeters
-0100 (100 mm) 3.94" min.

3.50 mm Cable Connectors PRF35

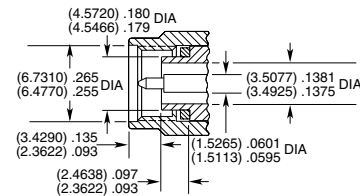
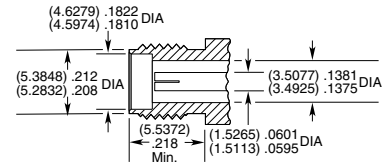


CONNECTORS FOR INDUSTRY STANDARD CABLES

| | |
|----------------------|----------------------------------|
| PRF35-P-C-EP-405-SS | RG 405, .085, semi-rigid |
| PRF35-J-C-EP-402-SS | RG 402, .141, semi-rigid |
| PRF35-J-C-EP-402-BS | RG 402, .141, semi-rigid |
| PRF35-P-C-EP-402-SS | RG 402, .141, semi-rigid |
| PRF35-P-C-EP-120A-SS | Semflex HP120, low loss flexible |
| PRF35-J-C-EP-160-SS | Semflex HP160, low loss flexible |
| PRF35-P-C-EP-160-SS | Semflex HP160, low loss flexible |

P-C = Cable Plug
J-C = Cable Jack
EP = Plating (50 μ" Gold center contact, passivated outer contact)
SS = Straight, Solder Clamp
BS = Bulkhead, Solder Clamp

INTERFACE STANDARD



SSMA TO 34 GHz

SSMA Cable Connectors PRFS1

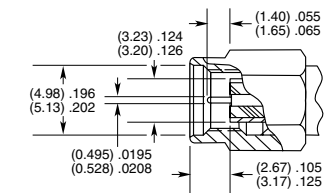
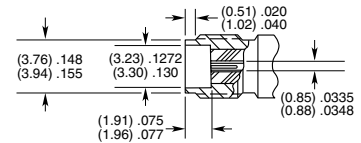


CONNECTORS FOR INDUSTRY STANDARD CABLES

| | |
|----------------------|---|
| PRFS1-J-C-EE-405-BD | RG 405, .085, semi-rigid |
| PRFS1-P-C-EE-405-SD | RG 405, .085, semi-rigid |
| PRFS1-P-C-EP-141A-SS | Harbour SS402, flexible alternative to RG 402 |

P-C = Cable Plug
J-C = Cable Jack
EE = Plating (50 μ" Gold center contact & outer contact)
EP = Plating (50 μ" Gold center contact, passivated outer contact)
SS = Straight, Solder Clamp
SD = Straight, Direct Solder
BD = Bulkhead, Direct Solder

INTERFACE STANDARD



X-ON Electronics

Largest Supplier of Electrical and Electronic Components

Click to view similar products for [RF Connectors / Coaxial Connectors](#) category:

Click to view products by [Samtec](#) manufacturer:

Other Similar products are found below :

[8915-1511-000](#) [89674-0827](#) [6001-7071-019](#) [6002-7051-003](#) [6002-7551-202](#) [6059674-1](#) [619550-1](#) [630059-000](#) [M39030/3-01N](#) [6500-7071-046](#) [6769](#) [CX050L2AQ](#) [7002-1541-010](#) [7002-1542-011](#) [7004-1512-000](#) [7009-1511-004](#) [7010-1511-000](#) [7029-1511-060](#) [7101-1541-010](#) [7101-1571-002](#) [7145-1521-002](#) [7203-1571-003](#) [7209-1511-011](#) [7210-1511-015](#) [7210-1511-019](#) [73137-5015](#) [73216-2241](#) [73404-2300](#) [7405-1521-005](#) [7405-1521-802](#) [8527](#) [8547](#) [FS11V](#) [877931](#) [8808-1511-001](#) [9049-9513-000](#) [9074-9513-000](#) [9101-9573-002](#) [910A205F](#) [9130-9573-002](#) [PL11SC-026](#) [PL375-33](#) [PL40-5](#) [PL74C-221](#) [PL75MC-217](#) [PL803-7](#) [980-8666-005](#) [1200690078](#) [1-201144-1](#) [R107003010W](#)