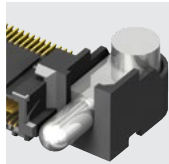
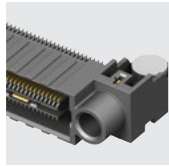


## Q2™ HIGH-SPEED GROUND PLANE CONNECTORS

### (0.635 mm) .025" PITCH RIGHT-ANGLE GROUND PLANE HEADERS & SOCKETS



**QMS-RA**  
Board Mates:  
QFS

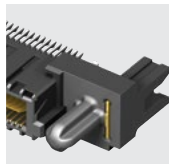


**QFS-RA**  
Board Mates:  
QMS

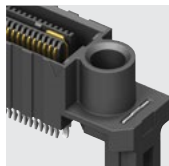
SERIES	PINS PER ROW NO. OF PAIRS	01	PLATING	TYPE	RA	MG	OTHER OPTION
QMS Header	-026, -052, -078 -D = (52 total pins per bank)		-SL = 10 μ" (0.25 μm) Gold on Signal Pins and Ground Plane, Matte Tin on tails	-D = Single-Ended  -D-DP = Differential Pair		-MG = Metal Guide Post (QMS only)	-K = Polyimide film Pick & Place Pad  -TR = Tape & Reel (-016, -026, -032 & -052 only)  -FR = Full Reel Tape & Reel (must order max. quantity per reel; contact Samtec for quantity breaks) (-016, -026, -032 & -052 only)

View complete specifications at: [samtec.com?QMS-RA](http://samtec.com?QMS-RA) or [samtec.com?QFS-RA](http://samtec.com?QFS-RA)

### (0.635 mm) .025" PITCH EDGE MOUNT GROUND PLANE HEADERS & SOCKETS



**QMS-EM**  
Board Mates:  
QFS



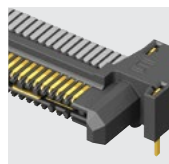
**QFS-EM**  
Board Mates:  
QMS

SERIES	POSITIONS PER ROW	01	PLATING	D	EM2	END OPTION	OTHER OPTION
QMS Header	-026, -052, -078		-SL = 10 μ" (0.25 μm) Gold on Signal Pins and Ground Plane, Matte Tin on tails			-PC4 = 4 Power Pins per end (QMS only)	-TR = Tape & Reel (-026 & -052 only)  -FR = Full Reel Tape & Reel (must order max. quantity per reel; contact Samtec for quantity breaks) (-026 & -052 only)

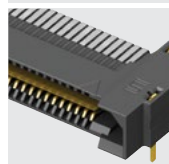
View complete specifications at: [samtec.com?QMS-EM](http://samtec.com?QMS-EM) or [samtec.com?QFS-EM](http://samtec.com?QFS-EM)

## Q RATE® SLIM BODY HIGH-SPEED GROUND PLANE CONNECTORS

### (0.80 mm) .0315" PITCH RIGHT-ANGLE SLIM BODY GROUND PLANE HEADERS & SOCKETS



**QRM8-RA**  
Board Mates:  
QRF8  
(-GP Required)



**QRF8-RA**  
Board Mates:  
QRM8  
(-GP Required)

SERIES	POSITIONS PER ROW	01	PLATING	RA	GP	OPTION
QRM8 Header	-026, -052, -078 (52 total positions per bank)		-L = 10 μ" (0.25 μm) Gold contact, Matte Tin on tails		-GP = Guide Post (Requires -GP on mating connector)	-K = (7.00 mm) .275" DIA Polyimide film Pick & Place Pad (-052 only)  -TR = Tape & Reel (-026, -052 only)  -FR = Full Reel Tape & Reel (must order max. quantity per reel; contact Samtec for quantity breaks) (-026 & -052 only)

**Note:**  
Some lengths, styles and options  
are non-standard, non-returnable.

View complete specifications at: [samtec.com?QRM8-RA](http://samtec.com?QRM8-RA) or [samtec.com?QRF8-RA](http://samtec.com?QRF8-RA)

## X-ON Electronics

Largest Supplier of Electrical and Electronic Components

*Click to view similar products for [Board to Board & Mezzanine Connectors](#) category:*

*Click to view products by [Samtec](#) manufacturer:*

Other Similar products are found below :

[589158040000018](#) [MDF7C-18P-2.54DSA\(55\)](#) [FCN-230C068-11](#) [FCN-268F012-G/BD](#) [FCN-268F036-G/BD](#) [FCN-268M012-G/0D](#) [FCN-268M024-G/1D](#) [FCN-723J004/1](#) [MIS-048-01-F-D-DP-K](#) [832-10-034-10-001000](#) [FX4C-80S-1.27DSA](#) [FCN-214Q030-G/0](#) [FCN-234P048-G/0](#) [FCN-235D050-G/C](#) [210-93-314-41-105000](#) [2-22603-0](#) [MDF7-40DP-2.54DSA\(55\)](#) [AXG720047](#) [5031084030](#) [MIT-114-03-F-D-K](#) [55323-1519](#) [DF33-2P-3.3DSA\(24\)](#) [YFT-20-05-H-03-SB-K](#) [503308-3040](#) [026-6203-PDB](#) [027-6203-PDB](#) [069159702701000](#) [10123981-102LF](#) [101A10019X](#) [55650-0588-C](#) [68684-306](#) [75140-7012](#) [589159005003045](#) [194261-1](#) [FCN-268F024-G0D](#) [10124054-515LF](#) [68685-603](#) [8-1616154-3](#) [MIS-019-01-F-D](#) [589159005002045](#) [541371078](#) [IL-WX-10PB-HF-B-E1000E](#) [FCN-268M024-G/3D](#) [20021832-06016C1LF](#) [KX15-20KLDL-E1000E](#) [MDF7-16DP-2.54DSA\(55\)](#) [AXE810124](#) [FCN-214J100-G/0](#) [FCN-230C068-E/S](#) [AXE812124](#)