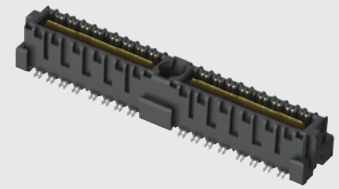


QMS-026-06.75-L-D-A



(0.635 mm) .025"

QMS SERIES

RUGGED GROUND PLANE HEADER

SPECIFICATIONS

For complete specifications and recommended PCB layouts see www.samtec.com?QMS

Insulator Material:
Liquid Crystal Polymer
Terminal & Ground Plane Material:
Phosphor Bronze
Plating:
Au over 50 μ" (1.27 μm) Ni
(Tin on Ground Plane Tail)
Current Rating:
Contact:
2.6 A per pin
(2 pins powered)
Ground Plane:
15.7 A per ground plane
(1 ground plane powered)
Operating Temp:
-55 °C to +125 °C
Voltage Rating:
300 VAC mated with QFS
RoHS Compliant:
Yes

Board Mates:

QFS

Cable Mates:

6QCQD

Standoffs:

SO, JSOM

ALSO AVAILABLE (MOQ Required)

- Other platings
- Guide Posts
- Without PCB Alignment Pins (05.75 and 06.75 only)
- Hot Pluggable
- 64 (-DP) and 104 positions per row

HIGH-SPEED CHANNEL PERFORMANCE

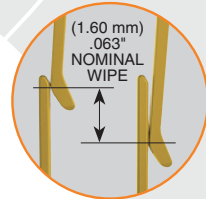
QMS-DP/QFS-DP @ 10 mm Mated Stack Height

Rating based on Samtec reference channel.
For full SI performance data visit Samtec.com or contact SIG@samtec.com

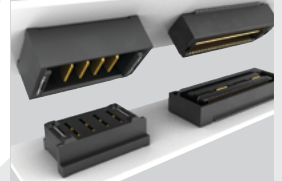
25 Gbps

Integral metal plane for power or ground

Increased insertion depth for rugged applications



POWER/SIGNAL APPLICATION



Compatible with UMP/T/UMPS for flexible two-piece power/signal solutions

PROCESSING

Lead-Free Solderable:
Yes
SMT Lead Coplanarity:
(0.10 mm) .004" max (026-052)
(0.15 mm) .006" max (078)*
*(.004" stencil solution may be available; contact IPG@samtec.com)
Board Stacking:
For applications requiring more than two connectors per board, contact ipg@samtec.com

RECOGNITIONS

For complete scope of recognitions see www.samtec.com/quality



STANDARDS

- SUMIT™
- PCI/104-Express™
- PCI/104-Express™ OneBank

Visit www.samtec.com/standards for more information.

Note:
Some lengths, styles and options are non-standard, non-returnable.

QMS	PINS PER ROW NO. OF PAIRS	LEAD STYLE	PLATING OPTION	TYPE	A	OTHER OPTION
------------	----------------------------------	-------------------	-----------------------	-------------	----------	---------------------

-026, -052, -078
(52 total pins per bank = -D)

-016, -032, -048
(16 pairs per bank = -D-DP)
(-078 & -048 Not available with -09.75 lead style)

Specify LEAD STYLE from chart

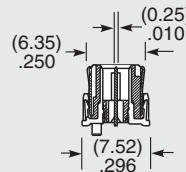
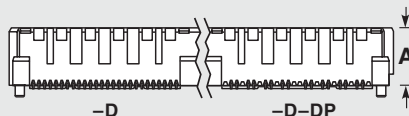
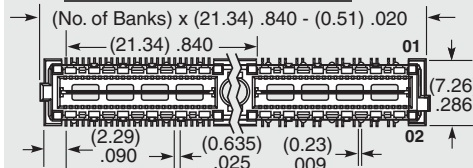
-L
(-05.75 and -06.75 lead style only)
= 10 μ" (0.25 μm) Gold on Signal Pins and Ground Plane (Tin on Signal Pin tails, and Ground Plane tails)

-SL
(-09.75 lead style only)
= 10 μ" (0.25 μm) Gold on Signal Pins and Ground Plane (Tin on Signal Pin tails, and Ground Plane tails)

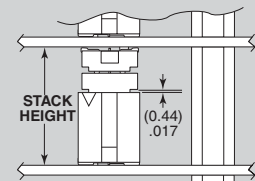
-D
= Single-Ended

-D-DP
= Differential Pair

-K
= (5.50 mm) .217" DIA Polyimide film Pick & Place Pad



APPLICATION



Requires Standoff
SO-1524-03-01-01-L or JSOM-1524-02 for 15.24 mm or SO-2215-02-01-01-L for 22 mm board spacing. Connectors designed to not fully seat when mated.

LEAD STYLE	A	MATED HEIGHT*	
		QFS LEAD STYLE -04.25	-06.25
-05.75	(5.38) .212	10 mm	12 mm
-06.75	(6.35) .250	11 mm	13 mm
-09.75	(9.35) .368	14 mm	16 mm

*Processing conditions will affect mated height. See SO Series for board space tolerances.

INDUSTRY STANDARD	INTERCONNECTS			
	TERMINAL	SOCKET	BANKS	STACK HEIGHT
SUMIT™	ASP-129637-01	ASP-129646-01	1	15.24 mm
PCI/104-Express™	ASP-129637-03	ASP-129646-03	3	15.24 mm
PCI/104-Express™	ASP-129637-13	ASP-129646-22	1	15.24 mm
PCI/104-Express™	ASP-142781-01	ASP-129646-01	1	22 mm
PCI/104-Express™	ASP-142781-02	ASP-129646-02	2	22 mm
PCI/104-Express™	ASP-142781-03	ASP-129646-03	3	22 mm

X-ON Electronics

Largest Supplier of Electrical and Electronic Components

Click to view similar products for [Board to Board & Mezzanine Connectors](#) category:

Click to view products by [Samtec](#) manufacturer:

Other Similar products are found below :

[10135583-642402LF](#) [89885-310LF](#) [589158040000018](#) [6-1393048-0](#) [68683-613](#) [MDF7-12DP-2.54DSA](#) [MDF7-18P-2.54DSA\(01\)](#) [MDF7-20DP-2.54DSA](#) [MDF7-26D-2.54DSA\(55\)](#) [MDF7-3P-2.54DSA\(01\)](#) [MDF7B-3P-2.54DSA\(55\)](#) [MDF7C-11P-2.54DSA\(55\)](#) [MDF7C-18P-2.54DSA\(55\)](#) [MDF7C-5P-2.54DSA\(01\)](#) [MDF7P-5P-2.54DSA\(55\)](#) [75234-0516](#) [FCN-230C068-11](#) [FCN-268F012-G/BD](#) [FCN-268F036-G/BD](#) [FCN-268M012-G/0D](#) [FCN-268M024-G/1D](#) [FCN-360C008-C](#) [FCN-360C040-C](#) [FCN-723J004/1](#) [MIS-048-01-F-D-DP-K](#) [832-10-034-10-001000](#) [93696-325LF](#) [11828-1FA](#) [AXK630345P](#) [18097-0013](#) [ICA-328STT](#) [2007042-2](#) [304400-2](#) [FCN-214Q030-G/0](#) [FCN-215Q040-G/0](#) [FCN-230C068-ESA](#) [FCN-234P048-G/0](#) [FCN-235D050-G/C](#) [FCN-360A3](#) [FCN-360C040-B](#) [210-93-314-41-105000](#) [2-22603-0](#) [379-064-521-202](#) [MDF7-12P-2.54DSA\(01\)](#) [MDF7-16P-2.54DS\(56\)](#) [MDF7-40DP-2.54DSA\(55\)](#) [MDF7-8P-2.54DSA\(55\)](#) [MDF7B-16P-2.54DSA\(55\)](#) [AXG720047](#) [5031084030](#)