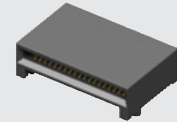
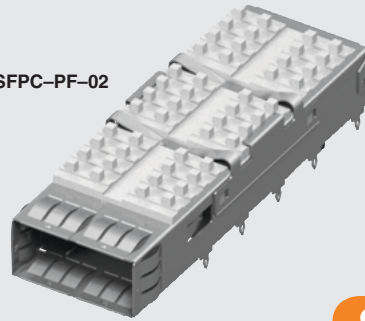


QSFP8-PF-02



QSFP8-038-01-L-D-RA1

(0,80 mm) .0315"

QSFP8, QSFP8, QSFP8 SERIES

QSFP CONNECTOR & CAGE

Mates with:
QSFP8

SPECIFICATIONS

For complete specifications and recommended PCB layouts see www.samtec.com?QSFP8

Insulator Material:
LCP

Contact Material:
Phosphor Bronze

Ground Plane:
Phosphor Bronze

Plating:
Au or Sn over 50µ" (1.27 µm) Ni

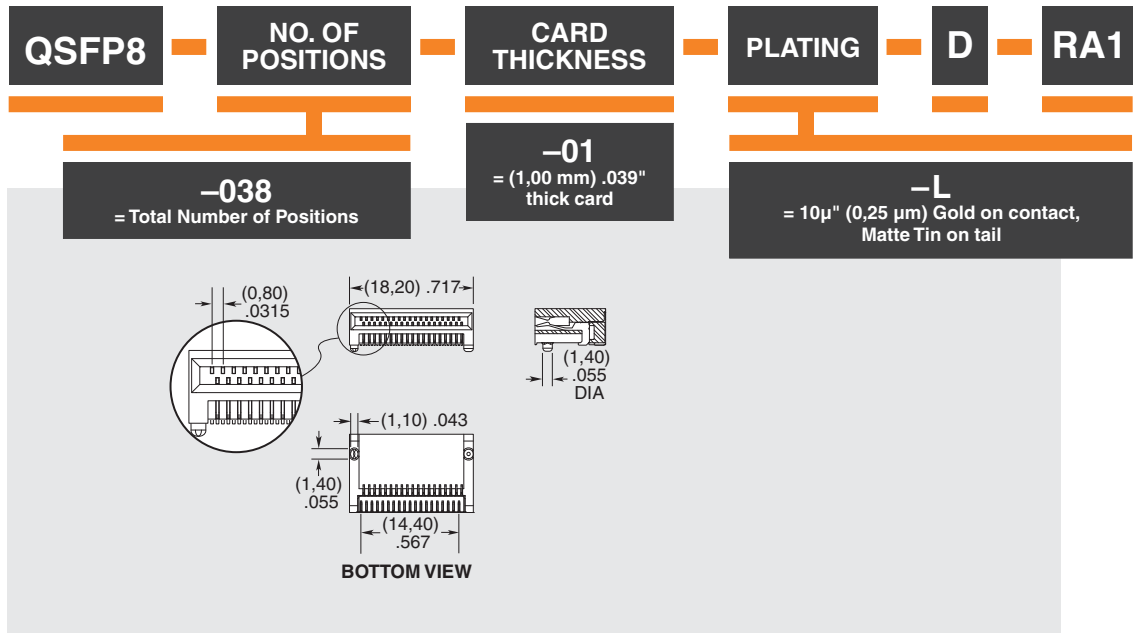
Current Rating (QSFP8/Card):
1.6 A per pin
(1 pin powered per row)

RECOGNITIONS

For complete scope of recognitions see www.samtec.com/quality



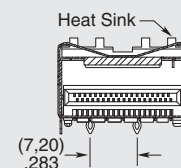
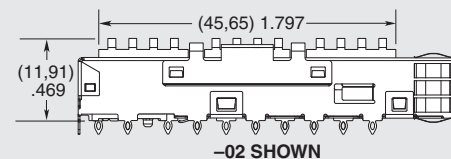
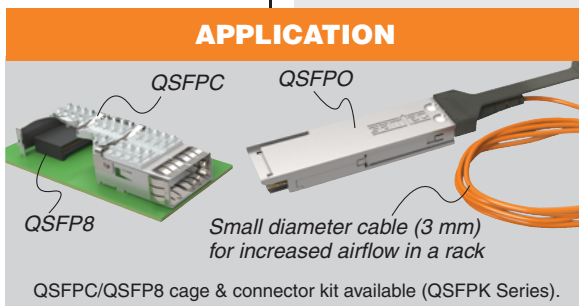
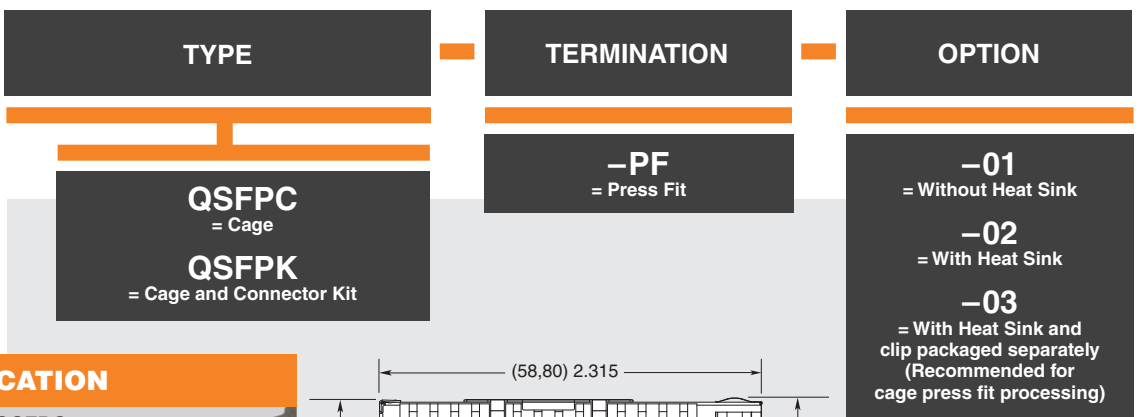
Note: Some lengths, styles and options are non-standard, non-returnable.



Use with: QSFP8

SPECIFICATIONS

For complete specifications see www.samtec.com?QSFP8 or www.samtec.com?QSFPK



Note: Some sizes, styles and options are non-standard, non-returnable.

X-ON Electronics

Largest Supplier of Electrical and Electronic Components

Click to view similar products for [I/O Connectors](#) category:

Click to view products by [Samtec](#) manufacturer:

Other Similar products are found below :

[571763P](#) [72.250.1628.2](#) [72.250.2428.2](#) [74720-0505](#) [76.350.0729.0](#) [76871-1403](#) [FCN-244F080-G/1](#) [FCN-260A9920](#) [MP-5T180MUNNA-005](#)
[PCR-E36PM](#) [PCS-XE26MA+](#) [G38A71314B](#) [1571250010](#) [157-22500-3](#) [MS3471L14-19P L/C](#) [91-569786-35H](#) [172501-4002](#) [172501-6002](#)
[FCN-260C008-A/L0](#) [FCN-260C024-AL0](#) [FCN-261Z008](#) [2000314-1](#) [200331-1](#) [PCR-E36FC+](#) [PCS-E28FS+](#) [PCS-XE26SLFD+](#) [PCS-](#)
[XE26SLFDT+](#) [G730VID08BDC24](#) [U90B2054081210](#) [UE86K842720321](#) [38113800006](#) [DP3AR020WQ1R200](#) [Z4.102.0680.0](#) [500-1040](#)
[500-1052](#) [500-1054](#) [ZP-4008-66L](#) [0709821002](#) [10-565995-597N](#) [DX40-20P\(55\)](#) [5554841-1](#) [U90B3054061110](#) [U65-E04-4020](#)
[ZPF00000000097891](#) [557-262M2-06C](#) [747360449](#) [10099439-003C-TRLF](#) [10137239-0021LF](#) [E9320-001-01](#) [10137239-0011LF](#)